



We are eager to hear your feedback on how the project can best meet your needs.

# Seaham Solar Park

Elements Green

You can submit feedback at any time by visiting [www.seahamsolar.com](http://www.seahamsolar.com) or scanning the QR code.

Your feedback is an essential part of today's consultation, the planning application, and the project as a whole. We are dedicated to ensuring that developments in this region provide meaningful benefits to the local community.





## Purpose of the Event

This consultation provides an opportunity for the community to learn about the proposed solar farm, its benefits, and potential impacts. The event aims to gather feedback, address concerns, and ensure the project aligns with local priorities. It also serves as a platform to foster collaboration, build trust, and demonstrate our commitment to transparency.

## Seaham Solar Park

Elements Green is developing a solar park 1.5 km north of Seaham, contributing to the UK Government's 2035 renewable electricity targets. In 2019 Durham County Council and Sunderland City Council declared Climate Emergency.

Our proposal has the potential to provide enough clean, affordable energy to meet the power needs of over 22,000 homes while avoiding more than 19,000 tonnes of carbon emissions every year.

The 80-hectare site spans four parcels south of Ryhope, near the railway, B1285, A19, and A1018. The project will connect to the Northern Power Grid network 1 km north of the A19/A1018 junction.

As the project falls below the 50 MW NSIP threshold, applications will be submitted to Durham County Council and Sunderland City Council. Underground cables will connect the solar park to the grid, delivering renewable energy to the region.

## Who we are

The proposals are led by Elements Green, a company with 15 years of experience in renewable energy development across the UK, EU, and globally. With a greenfield pipeline exceeding 12 GW, Elements Green is a leader in advancing renewable energy projects worldwide.



## Honouring Seaham's Energy Legacy

Seaham, located in County Durham, England, was historically served by several collieries, each comprising multiple pits. The primary collieries and their respective pits were:

**Seaham Colliery:** Established in 1849 by the 3rd Marquess of Londonderry, this colliery featured three main shafts:

- **No. 1 and No. 2 Pits:** These were part of a single large shaft divided by a brattice (partition) and functioned as the downcast shaft for ventilation.
- **No. 3 Pit:** Situated approximately 150 yards west of the No. 1 and No. 2 shaft, this served as the upcast shaft.

**Seaton Colliery:** Initially developed by Lord Durham and the Hetton Coal Company, Seaton Colliery was later acquired by Lord Londonderry in 1864 and merged with Seaham Colliery.

**Vane Tempest Colliery:** Production commenced in 1928, and this colliery operated until its closure in 1992.

In the late 19th century, the colliery was producing between 2,500 and 2,800 tons of coal per day, which were shipped at Seaham Harbour and Sunderland Dock. At its height, in 1914, the colliery employed 2,574 people below ground and 520 above ground.

The mine was nationalised in 1947 and in 1988 was merged with Vane Tempest colliery, and was closed by 1993.

Today, we honour that heritage by embracing a new chapter in Seaham's energy story.

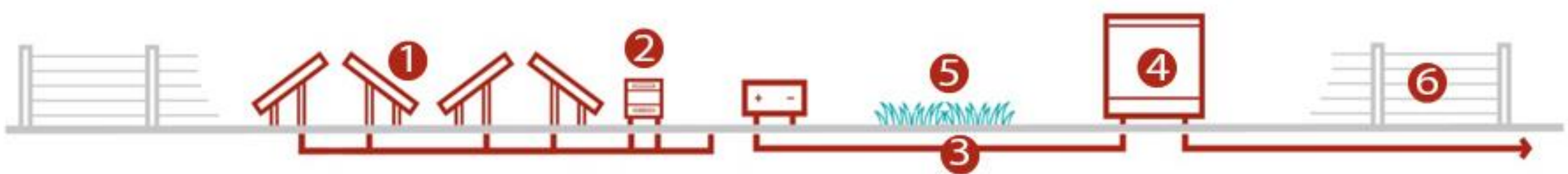
The development of solar farms will continue this long-standing tradition of energy generation.





A solar farm generates clean energy using an array of photovoltaic (PV) panels, which convert sunlight into direct current (DC) electricity. This is sent to inverters, where it is converted into alternating current (AC) for compatibility with the power grid.

Electricity is transported via underground cables to an on-site substation, which regulates voltage and ensures safe distribution to the grid. A site typically includes landscape areas to support biodiversity and minimise visual impact, as well as fencing for security and protection of equipment. Together, these components deliver reliable, renewable energy while blending into the environment.



## Solar array

① Solar Panels

## Electrical connection infrastructure

② Inverter

③ Underground cable

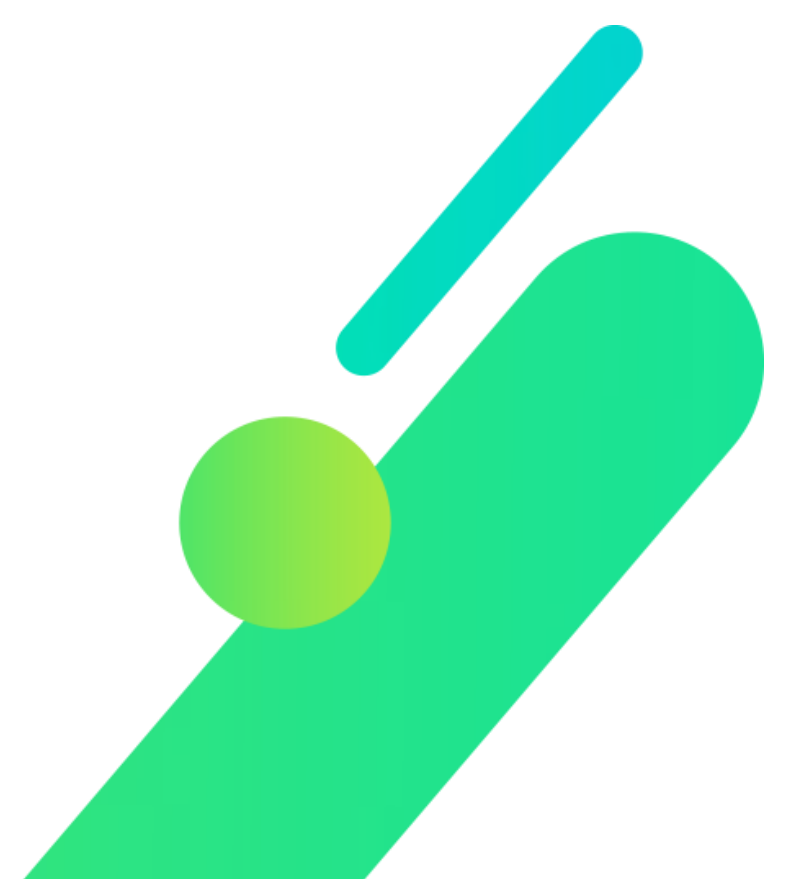
④ Substation

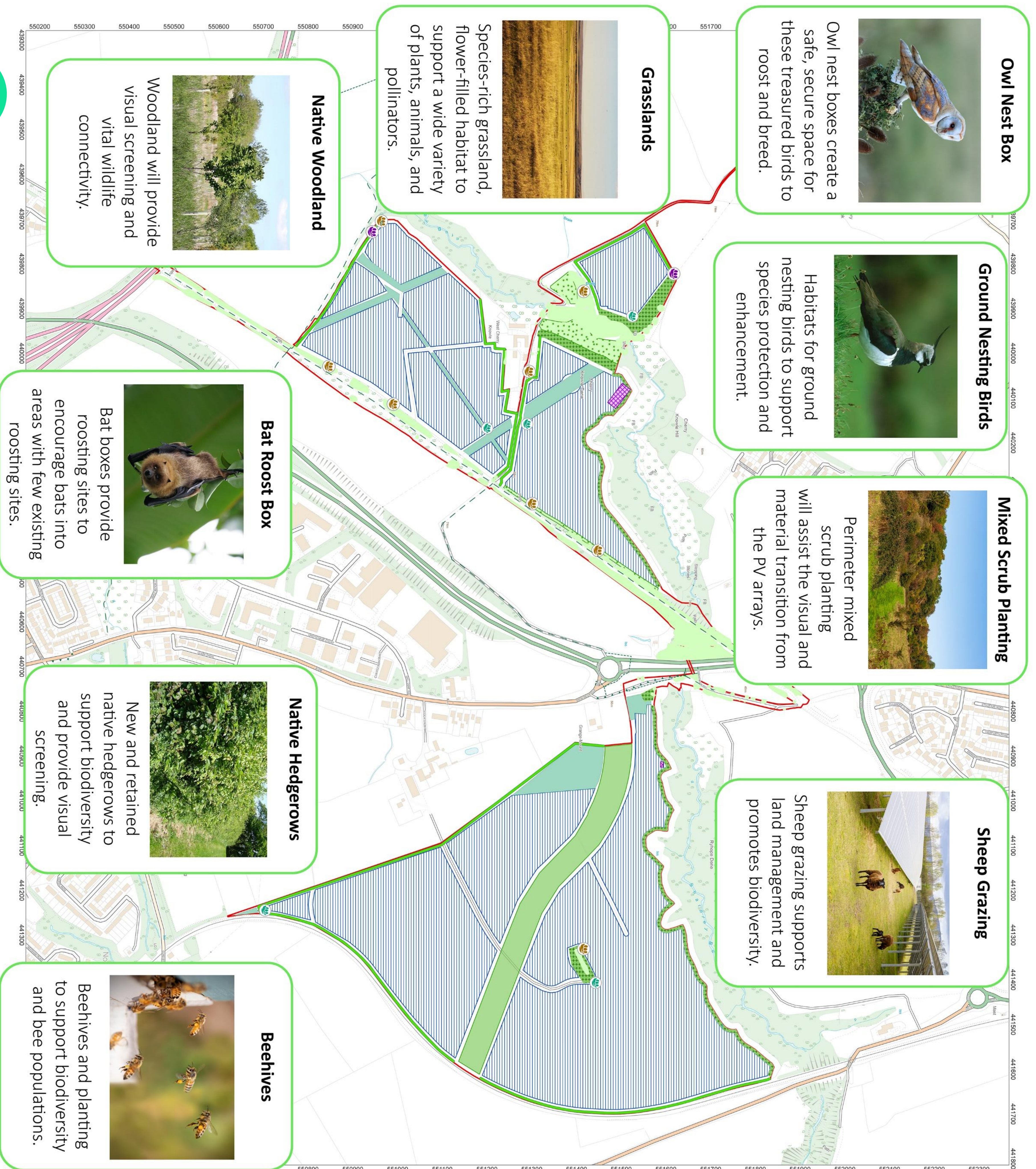
## Mitigation and enhancement measures

⑤ Landscape area

## Ancillary works

⑥ Fencing





elements green

- Proposed Solar Array Areas
- Substation Area
- Existing Public Rights of Way
- Bridleway
- Cycleway
- Footpath
- Proposed Bat Roost Box
- Proposed Owl Nest Box
- Proposed Ground Nesting Bird Plot
- Retained Grassland
- Existing Trees and Woodland
- Existing and Proposed Hedgerow
- Proposed Native Woodland
- Proposed Mixed Scrub Planting Line
- Proposed Species Rich Grass Mix

0 75 150 300 Meters

Ref: 009-001-045 | Date: 02/12/2024 | Scale: 1:4,000 @ A1

Landscape Masterplan  
Seaham Solar Park

**It is a priority for us and a requirement of the planning process to ensure that any ecological factors are appropriately considered and addressed**

Before submitting the planning application, we will have conducted numerous ecological surveys to ensure our enhancement measures are both appropriate and effective:

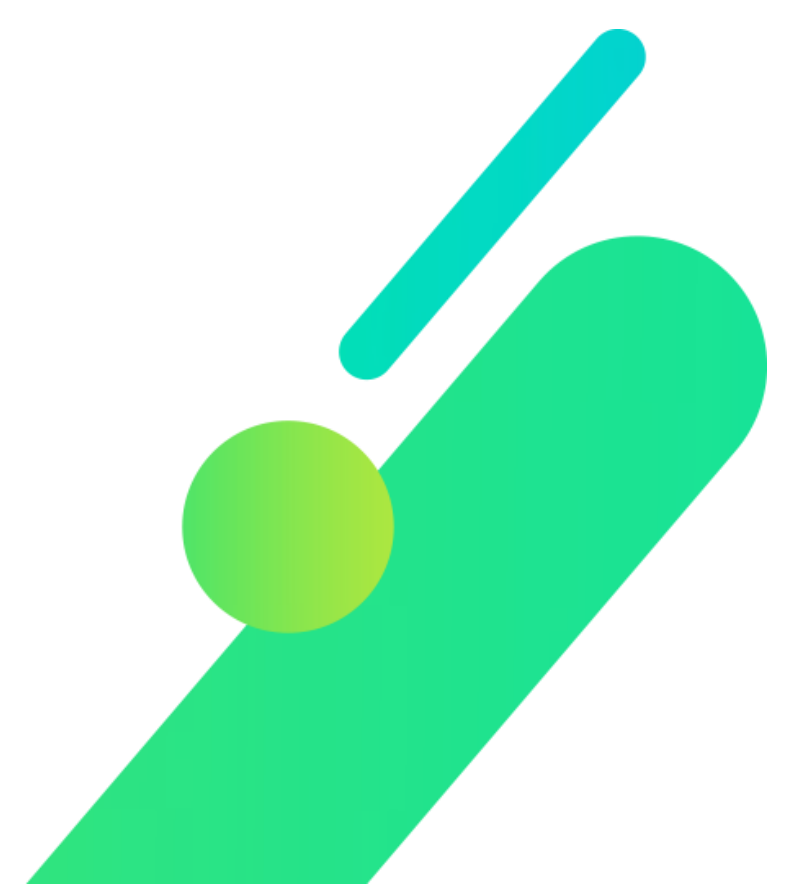
- Breeding bird surveys
- Preliminary Ecological Appraisal
- Protected species survey
- Wintering bird survey
- Habitat regulations assessment
- Biodiversity net gain (BNG) statement
- Ecological impact assessment
- Habitat management and monitoring plan
- Modular river survey for physical habitat (MoRPh)

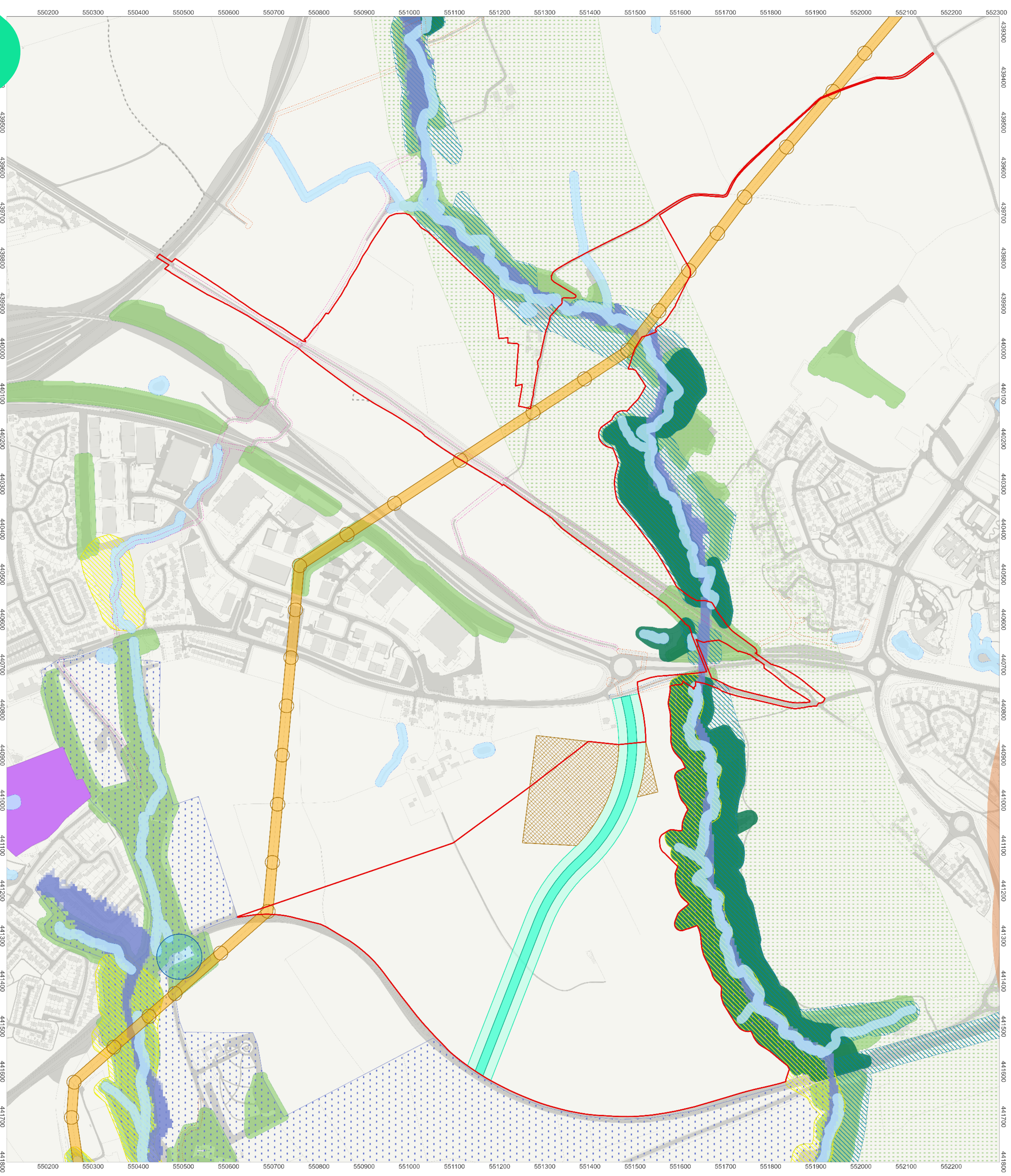


Elements Green are proud to partner with the RSPB to ensure that wildlife thrives on our parks. Charlotte Martin-Taylor of the RSPB: *“We are excited to unite expertise with Elements Green to create a future where both wildlife and clean energy thrive.”*



We are currently assessing the feasibility of incorporating sheep grazing and apiaries on the site.





- Site Area
- Watercourses and Waterbodies (10m Buffer)
- Flood Zone 3
- Flood Zone 2
- Bridleway (5m Buffer)
- Cycleway (5m Buffer)
- Footpath (5m Buffer)
- Overhead Line Poles (15m Buffer)
- 66kV Overhead Lines (11m Buffer)
- Eastern Green Link (EGL) Cable
- Easement (20m Corridor)
- Eastern Green Link (EGL) Construction (60m Corridor)
- Eastern Green Link (EGL) Construction Compound
- Listed Buildings (50m Buffer)
- Housing Land Allocation
- Areas of Higher Landscape Value
- Local Wildlife Site (15m Buffer)
- Site of Nature Conservation Importance (15m Buffer)
- Ancient Woodland (15m Buffer)
- Woodland (10m Buffer)
- Wildlife Corridor
- Conservation Areas (500m Buffer)

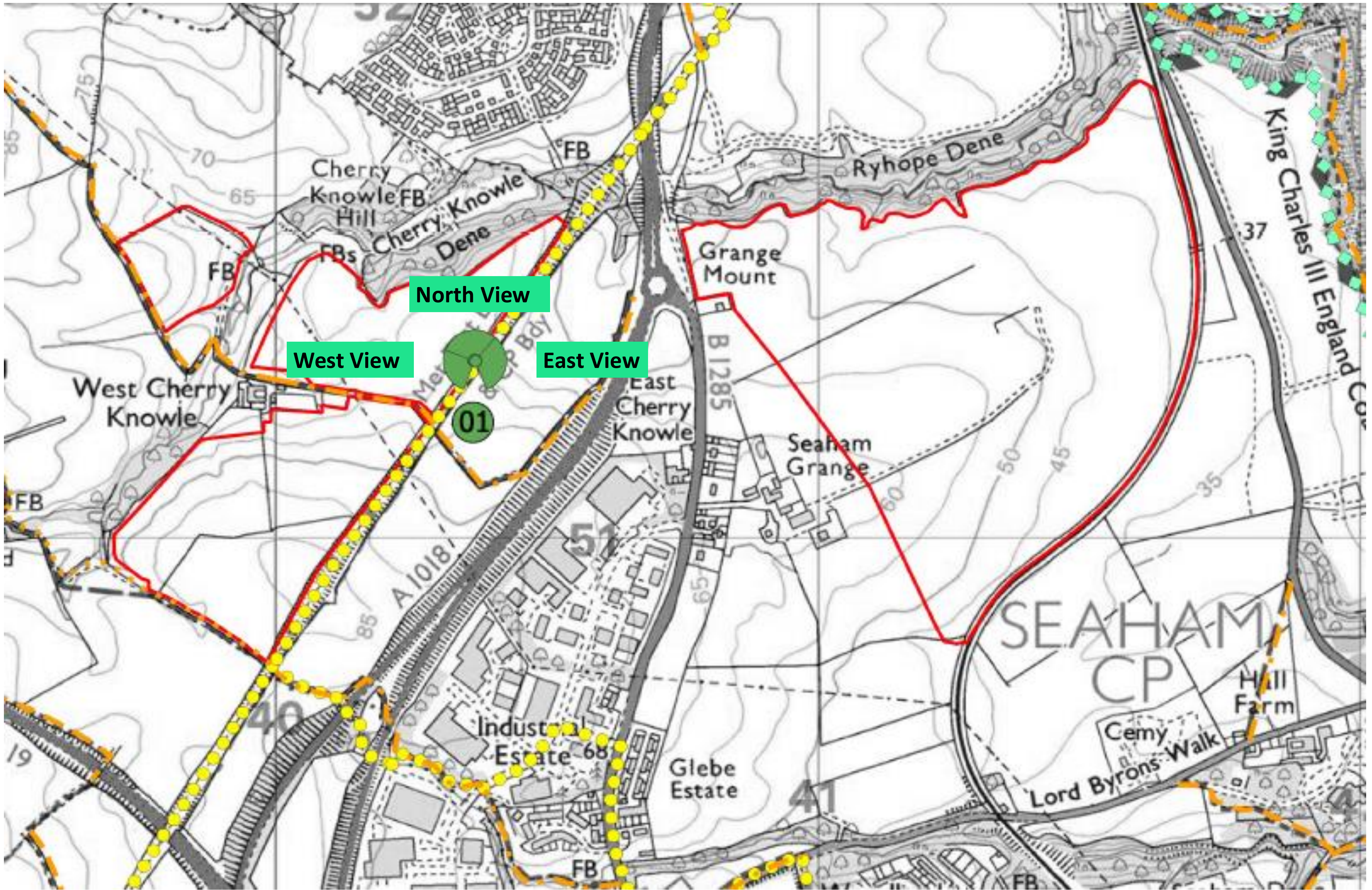
Site Area: 81.23 ha



Ref: 009-001-043 | Date: 28/11/2024 | Scale: 1:4,000 @ A1

## Project Designations and Opportunities Sedham Solar Park





Site extents



Year 1 West View



Year 15

Indicative proposed planting to hill tops and provide screening



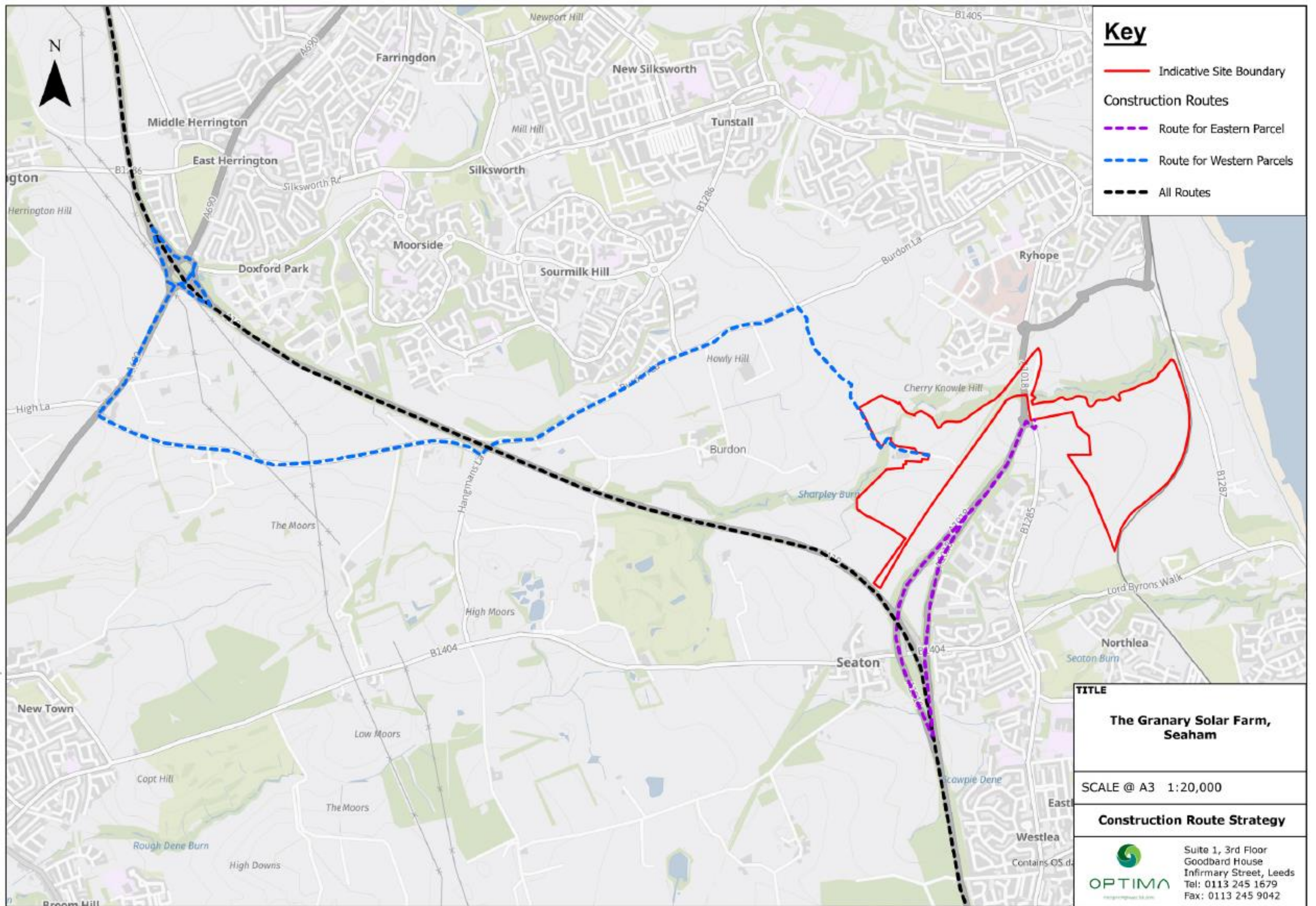


← Site extents →



← Site extents →

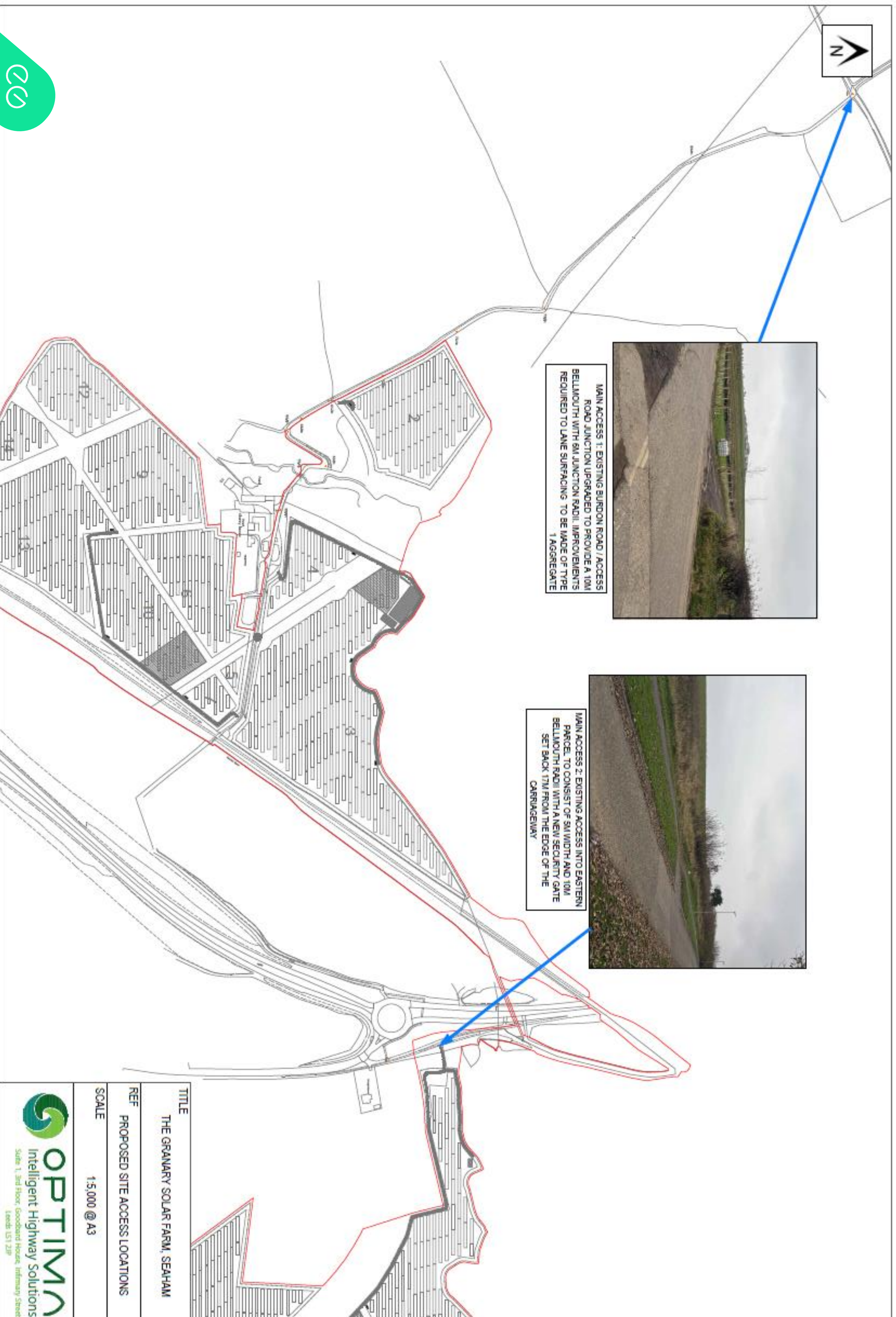




Deliveries will use standard HGVs, with no abnormal loads expected.

- **Western Parcel (Burdon Lane):** Vehicles will access via the A19, using Herrington Interchange to join the A690 southbound, then Burdon Lane for 4.5km before turning left onto the on-site track.
- **Eastern Parcel (A1018):** Access will be via the A19 to the A1018 roundabout (north and southbound)





## Education

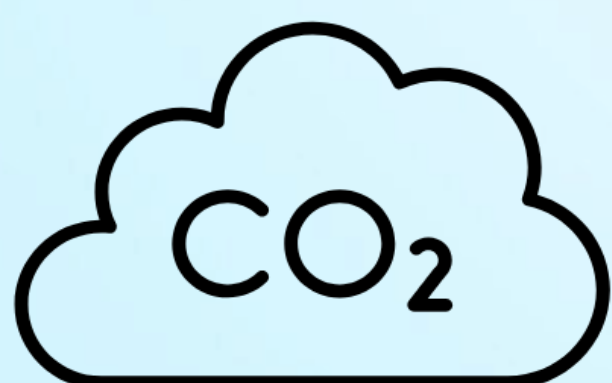
As part of our commitment to creating a positive impact beyond renewable energy projects, we are proud to offer additional community benefits through initiatives like the EG Academy. The Academy provides accredited online courses, in-person seminars, and work experience opportunities, empowering young people and professionals with the skills and knowledge to thrive in the renewable energy industry. By supporting education and career development, the EG Academy ensures communities are actively engaged in shaping a sustainable future. Our EG Academy is free to residents of the parishes included in the consultation area.

## Community benefit

We work closely with local councils, recreational organisations, and community groups to ensure our plans for community benefits align with resident needs. Our community benefit package would support local causes. Local residents and businesses can suggest local schemes or projects that we could support or deliver to benefit those communities closest to the project.



## Key benefits



Contributing to national and local climate targets by avoiding approximately 19,000 tonnes of CO<sub>2</sub>



Helping reduce household bills and provide energy security with home-grown solar power



Increasing biodiversity and protecting wildlife with additional plantings and protected areas



A community benefit fund, that will support initiatives that directly benefit local communities