

Welcome to our project newsletter about the works taking place at the former library site in Horley. Construction works are progressing to deliver two town houses and six apartments as part of Surrey County Council's "Right Homes, Right Support Programme".

We will continue to publish regular newsletters throughout the project to provide progress updates and also inform you of movements in and around the construction site.

The design focuses on ensuring residents and their care workers will have sufficient space, and key to this has been the design considerations around the accessibility needs of residents. The accommodation has been configured to ensure residents can remain in their own home as they age and/or their needs change. All of the accommodation has been designed in consultation with occupational therapists to be wheelchair accessible.

Project update

We continue to make good progress on the following work activities

- Roofing
- Commencement of internal fit out
- Brickwork and blockwork
-

Forthcoming works include?

The next month will see the following works take place:

- Installation of the roof for the townhouses using a mobile crane
- Continuation of internal fit out works

We would like to take this opportunity to thank you, our surrounding neighbours for your continued patience throughout the construction period. Should you have any questions or concerns relating to the site activity, please contact a member of our team.



REGISTERED SITE

CONSIDERATE CONSTRUCTORS SCHEME

Our site is registered with the Considerate Constructors Scheme. It is monitored by an experienced professional who assesses our performance against the Code of Considerate Practice, which aims to minimise the impact of construction on the community.

If you have a concern or feedback about our construction activities you can call the CCS on 0800 783 1423 or visit the website at Considerate Constructors Scheme - Public - Get In touch



MEET THE TEAM



Craig Paling
Assistant Project
Manager

cpaling@neilcott.co.uk



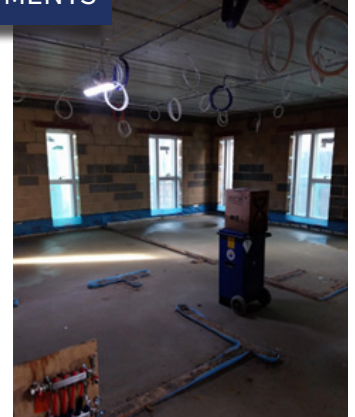
Chris Ward
Project Manager

cward@neilcott.co.uk

TOWNHOUSES



APARTMENTS



The design focuses on ensuring residents and their care workers will have sufficient space, and key to this has been the design considerations around the accessibility needs of the residents. The accommodation has been configured to ensure residents can remain in their own home as they age and/or their needs change. All the accommodation has been designed, in consultation with occupational therapists, to be wheelchair accessible and adaptable, meeting M4(2) standard internally and externally. Two of the six self-contained apartments and one bedroom in each of the townhouses have been designed to the higher M4(3) standard so they will be ready for current, potential and future wheelchair users.

