

Welcome to our project newsletter about the works taking place for new Supported Independent Living Accommodation in Byfleet. Construction works have commenced to deliver new homes as part of Surrey County Council's "Right Homes, Right Support Programme".

We will continue to publish regular newsletters throughout the project to provide progress updates and also inform you of movements in and around the construction site. Visit the Community Engagement website for the project here: <https://ByfleetSIL.communityuk.site/>

What's the project about?

This Supported Independent Living scheme has been designed to allow working age adults with a learning disability and/or autism to maintain or develop their independence and be part of the community. The overall aim of the scheme is to provide sensitive, specialist residential accommodation, which is much needed in the local area.

Currently, there are limited options for suitable accommodation in Surrey. This means that a significant percentage of working age adults supported by Surrey County Council's Adult Social Care (ASC) team are placed out of county. These individuals are therefore distanced from their family and their social care professionals (Social Workers).

Enabling people to return to and live in Surrey would reduce the need for their families and Surrey County Council professionals to travel as far (often in a car) to maintain personal contact.

What's been happening so far?

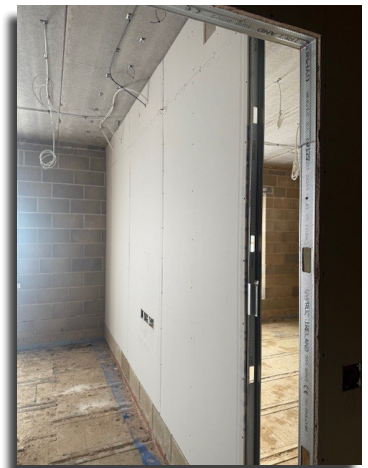
The Apartment Block: We have successfully completed the brick and blockwork on the apartment building and are now nearing completion with the metal roofing as shown in the photos.

This will enable the scaffold to be gradually removed as the windows are installed.

Inside, we are currently installing plasterboard walls, with mechanical and electrical installations following closely behind.

Townhouses: We've reached roof level on the townhouses, with the steelwork recently being installed. The timber roof joists are now being installed also, which will shape the roof pitch, and the roof covering will be consistent with that on the apartment block.

Internally, we've begun minor mechanical and electrical works.



What's happening next month?

External window and door installation is due to take place towards the end of April, which will mark the start of internal finishes and plastering.

Floor screeding will also take place over the next month in both blocks, and the scaffold will be gradually struck as the windows are installed.



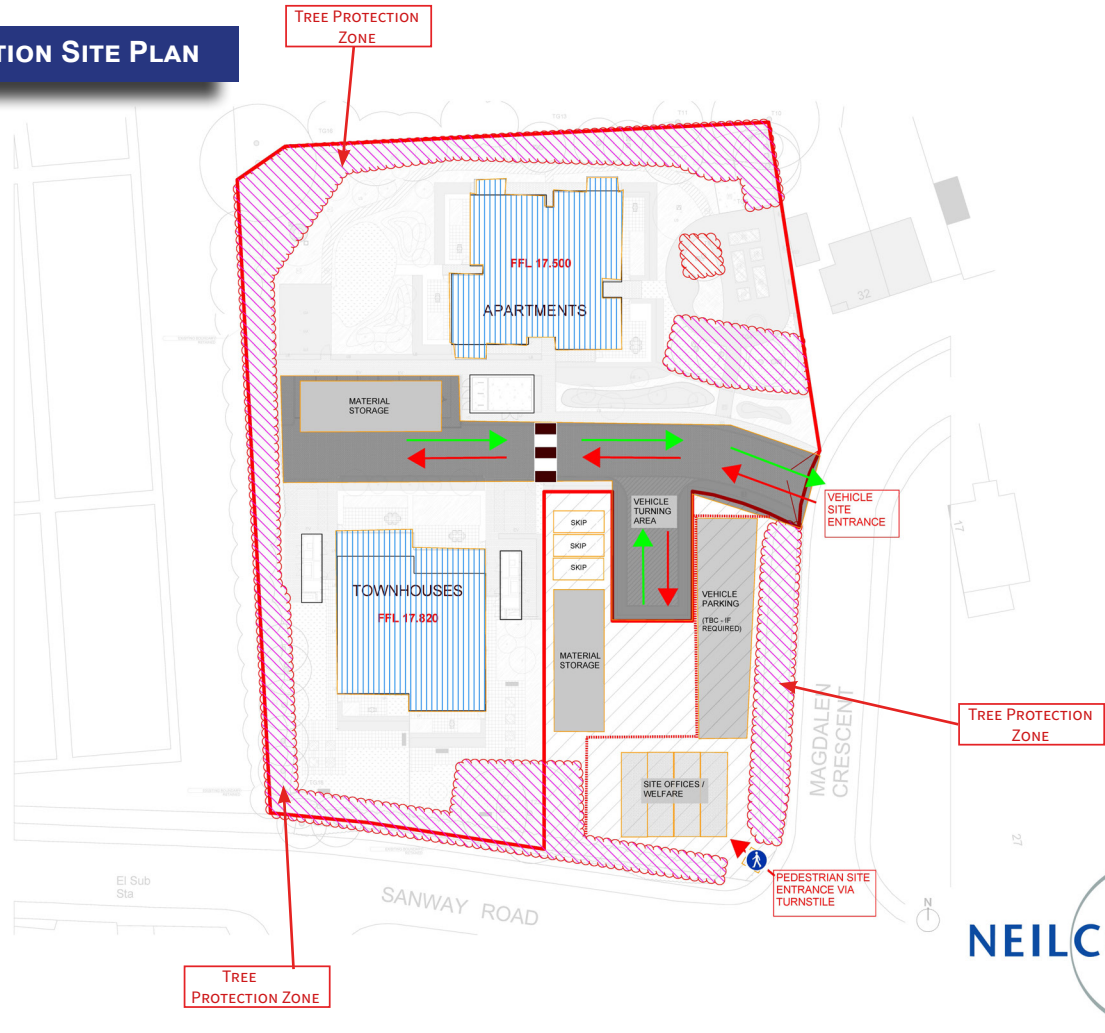
MEET THE TEAM



William Eddy
Project Manager
weddy@neilcott.co.uk

PROJECT NEWSLETTER - APRIL 2025

CONSTRUCTION SITE PLAN



We would like to take this opportunity to thank you, our surrounding neighbours for your continued patience throughout the construction period. Should you have any questions or concerns relating to the site activity, please contact a member of our team.

Our site is registered with the Considerate Constructors Scheme. It is monitored by an experienced professional who assesses our performance against the Code of Considerate Practice, which aims to minimise the impact of construction on the community.

If you have a concern or feedback about our construction activities you can call the CCS on 0800 783 1423 or visit the website at Considerate Constructors Scheme - Public - Get In touch

