

# Pellatt Road, Wembley



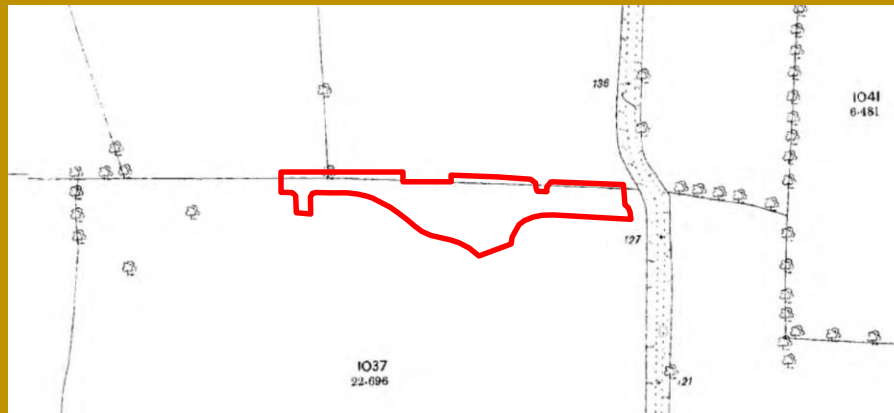
# Site edged red



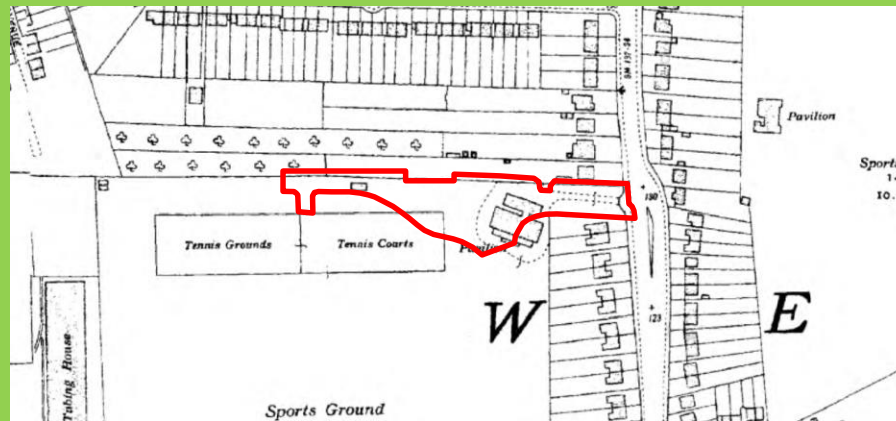
# Existing site



# Site History



1800-1900s



1930s

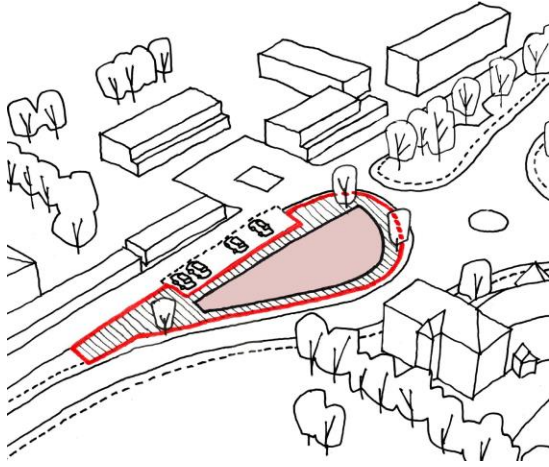


Present Day

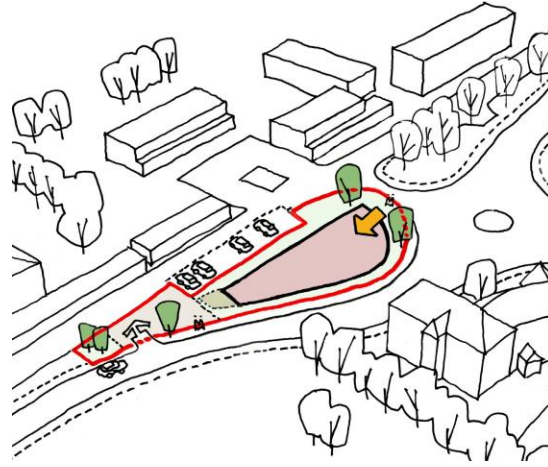


# Living in the Park

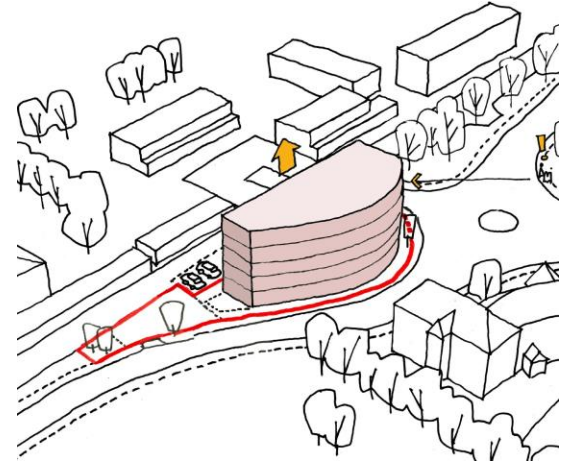
01. Footprint



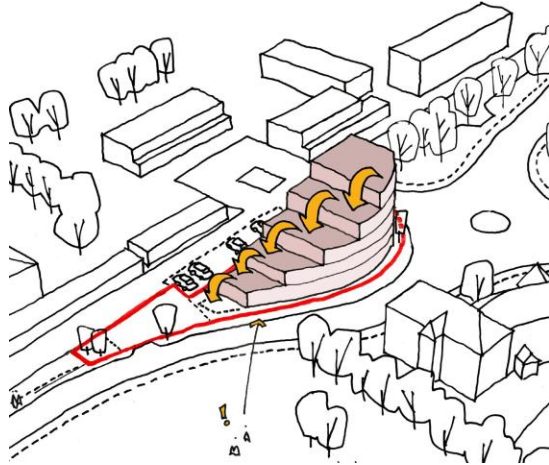
02. Access



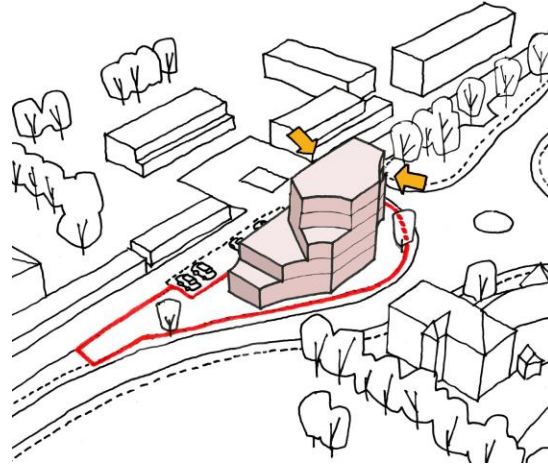
03. Celebrate the Corner



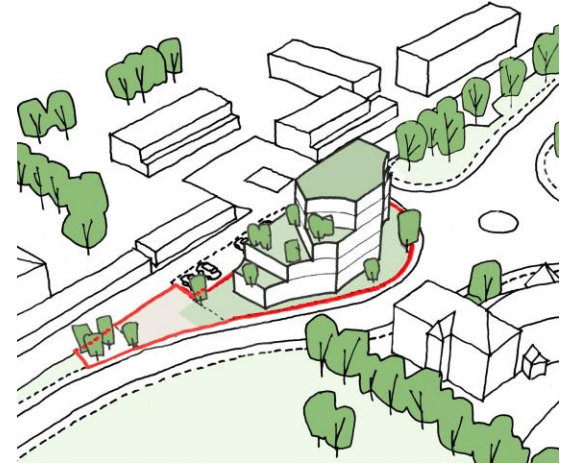
04. Terracing



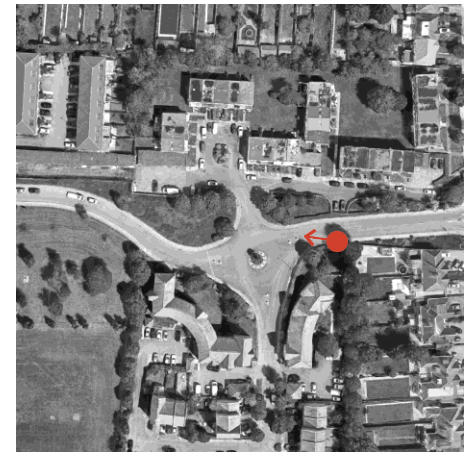
05. Articulated Form



06. Living in the Park



# View from Pellatt Road looking West



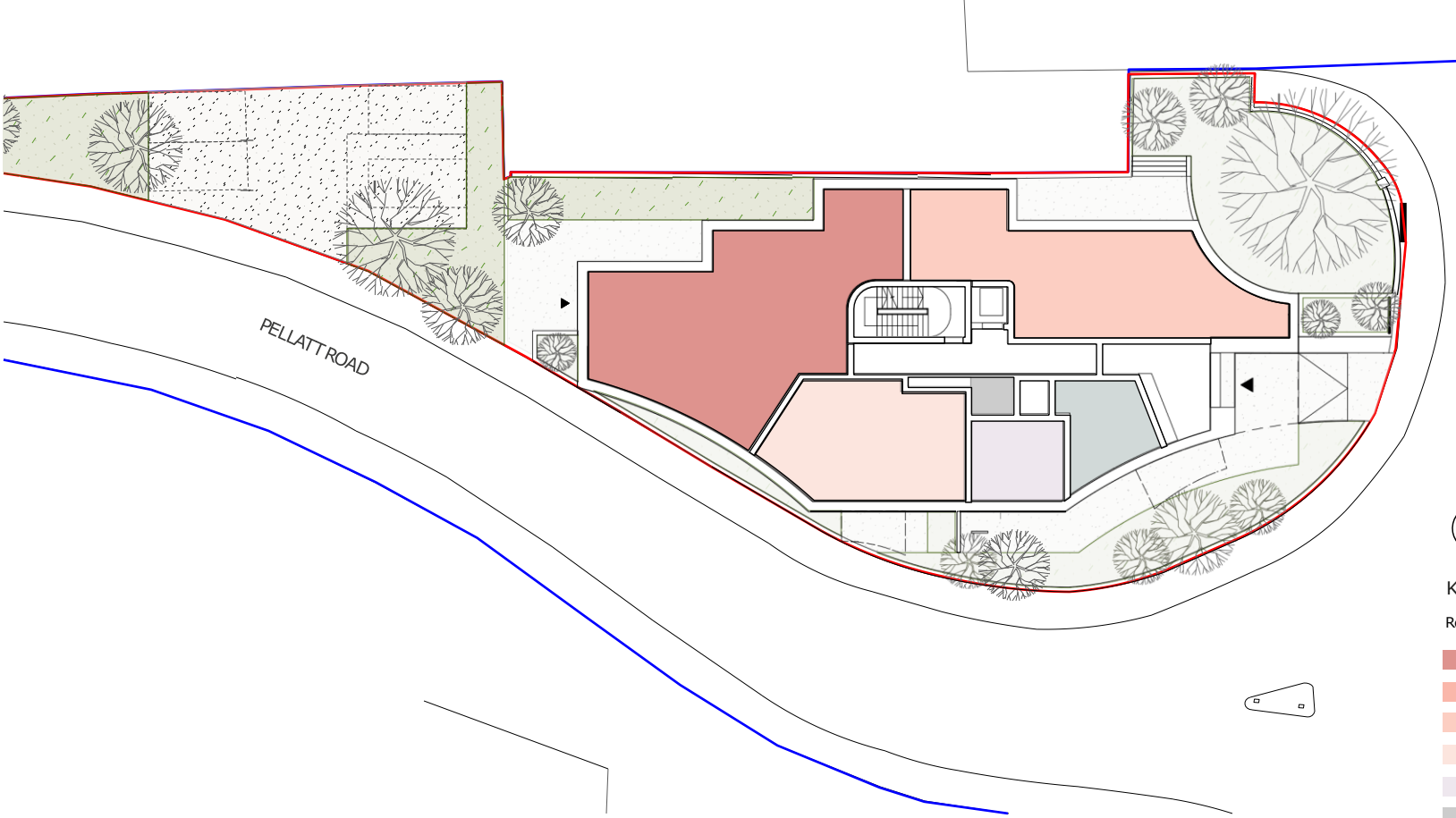
# View from the sportsground looking North East



# View from Walton Gardens looking South-West



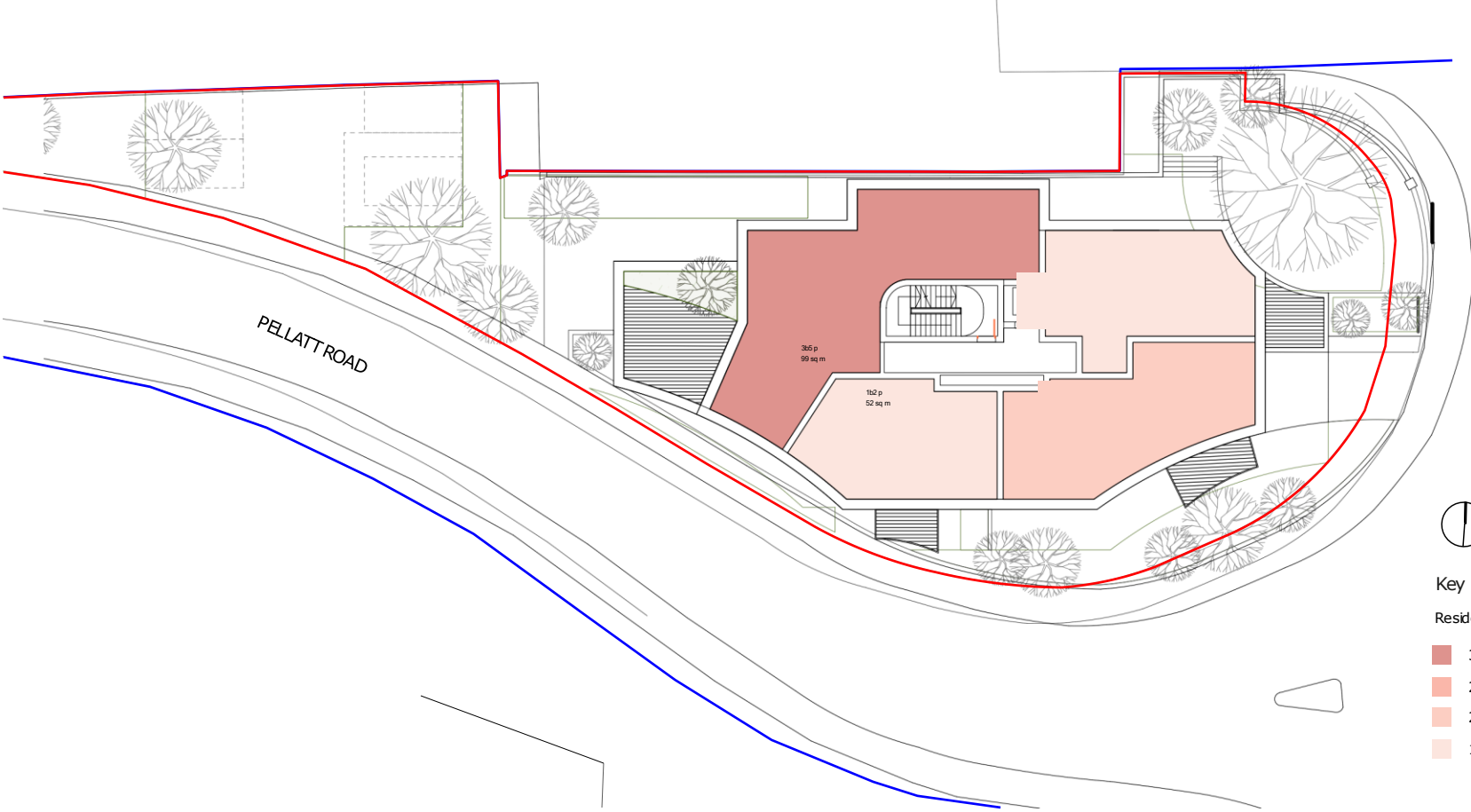
# Ground Floor



Key  
Residential

- 3 Bedroom 5 Person Home
- 2 Bedroom 4 Person Home
- 2 Bedroom 3 Person Home
- 1 Bedroom 2 Person Home
- Bike Store
- Plant Area
- Bin Store

# First Floor



- Key
- Residential
- 3 Bedroom 5 Person Home
  - 2 Bedroom 4 Person Home
  - 2 Bedroom 3 Person Home
  - 1 Bedroom 2 Person Home

3x5 p

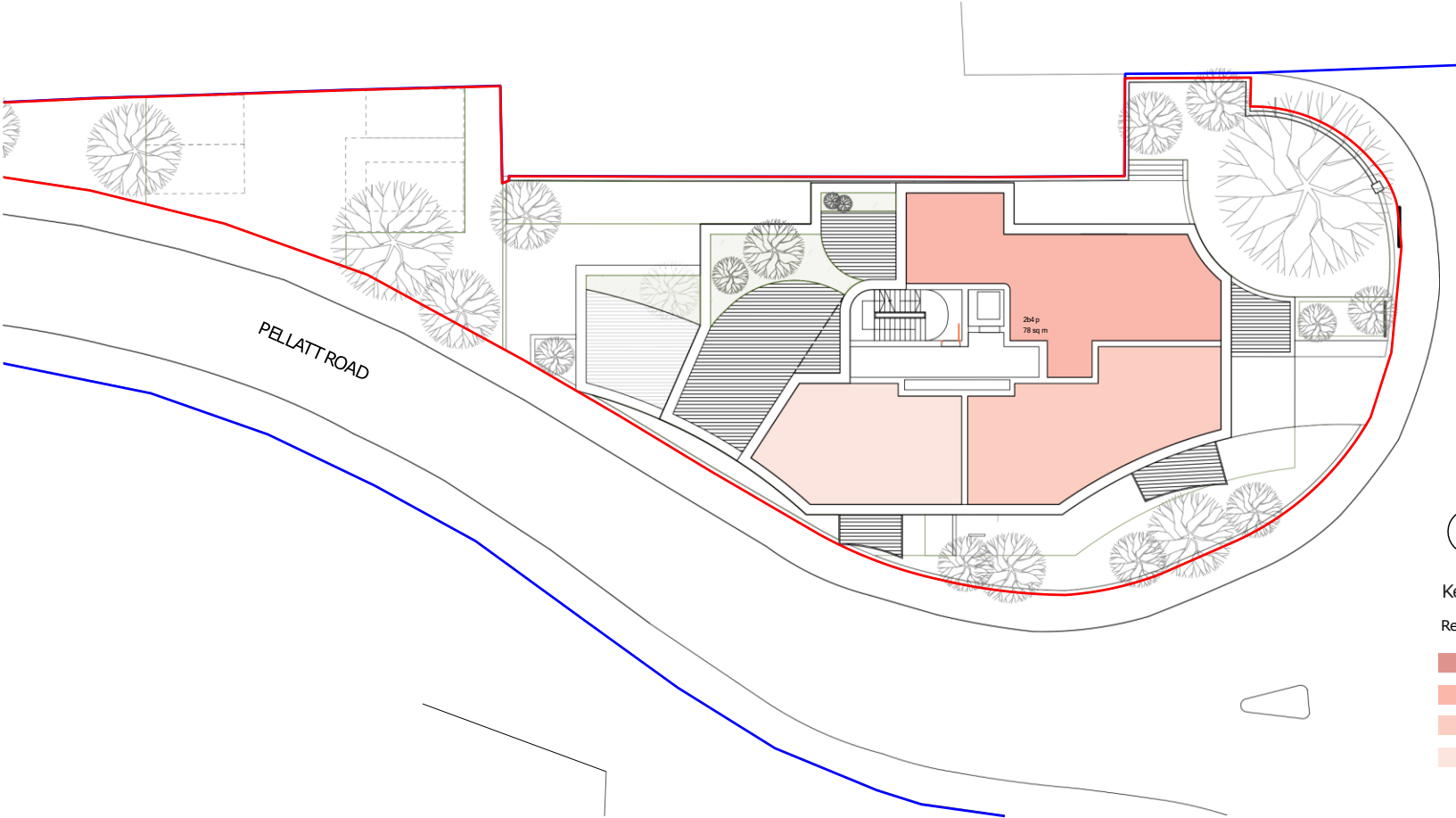
99 sq m

1x2 p

52 sq m

PELLATT ROAD

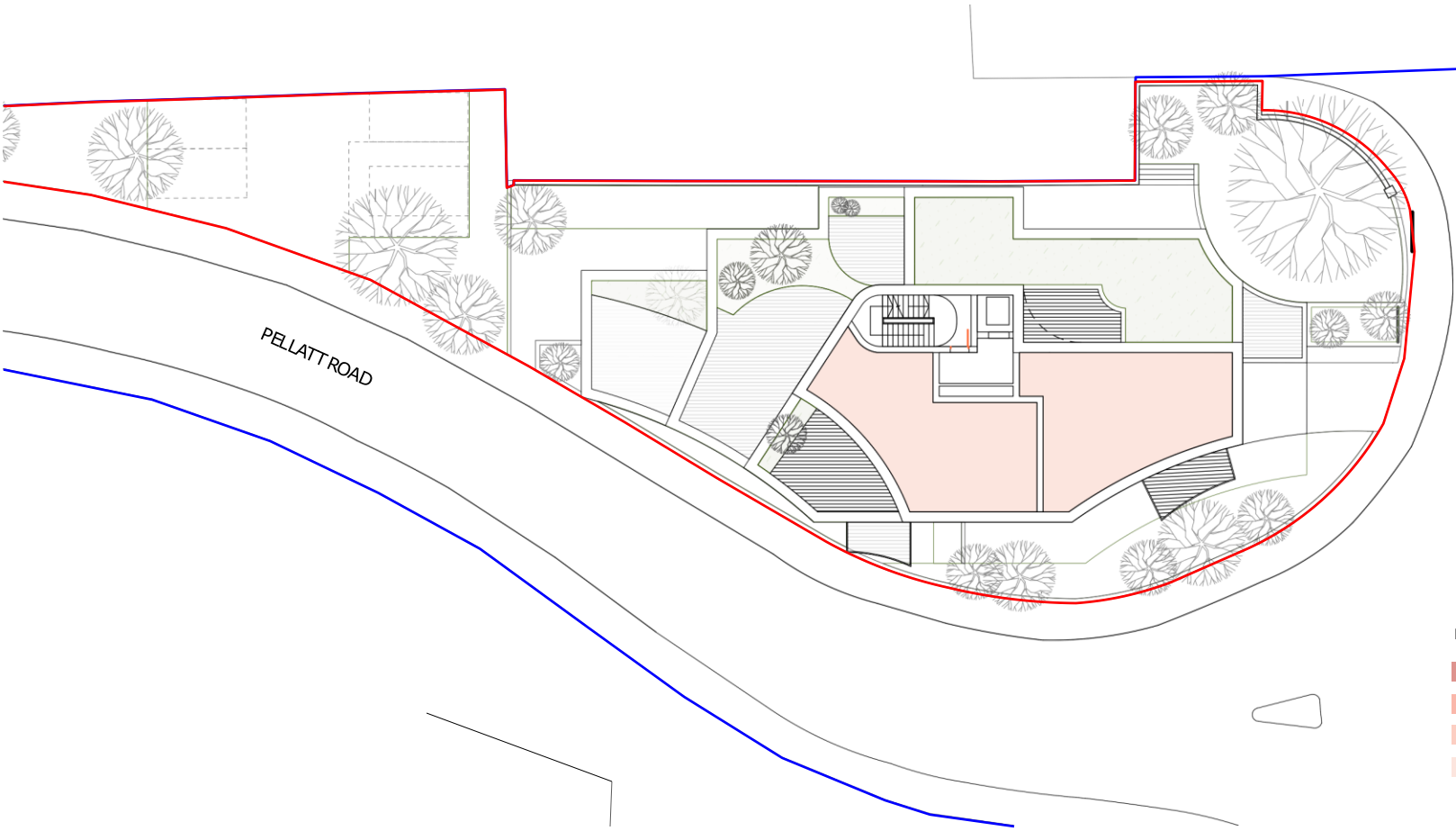
# Second Floor



Key  
Residential

- 3 Bedroom 5 Person Home
- 2 Bedroom 4 Person Home
- 2 Bedroom 3 Person Home
- 1 Bedroom 2 Person Home

# Third Floor

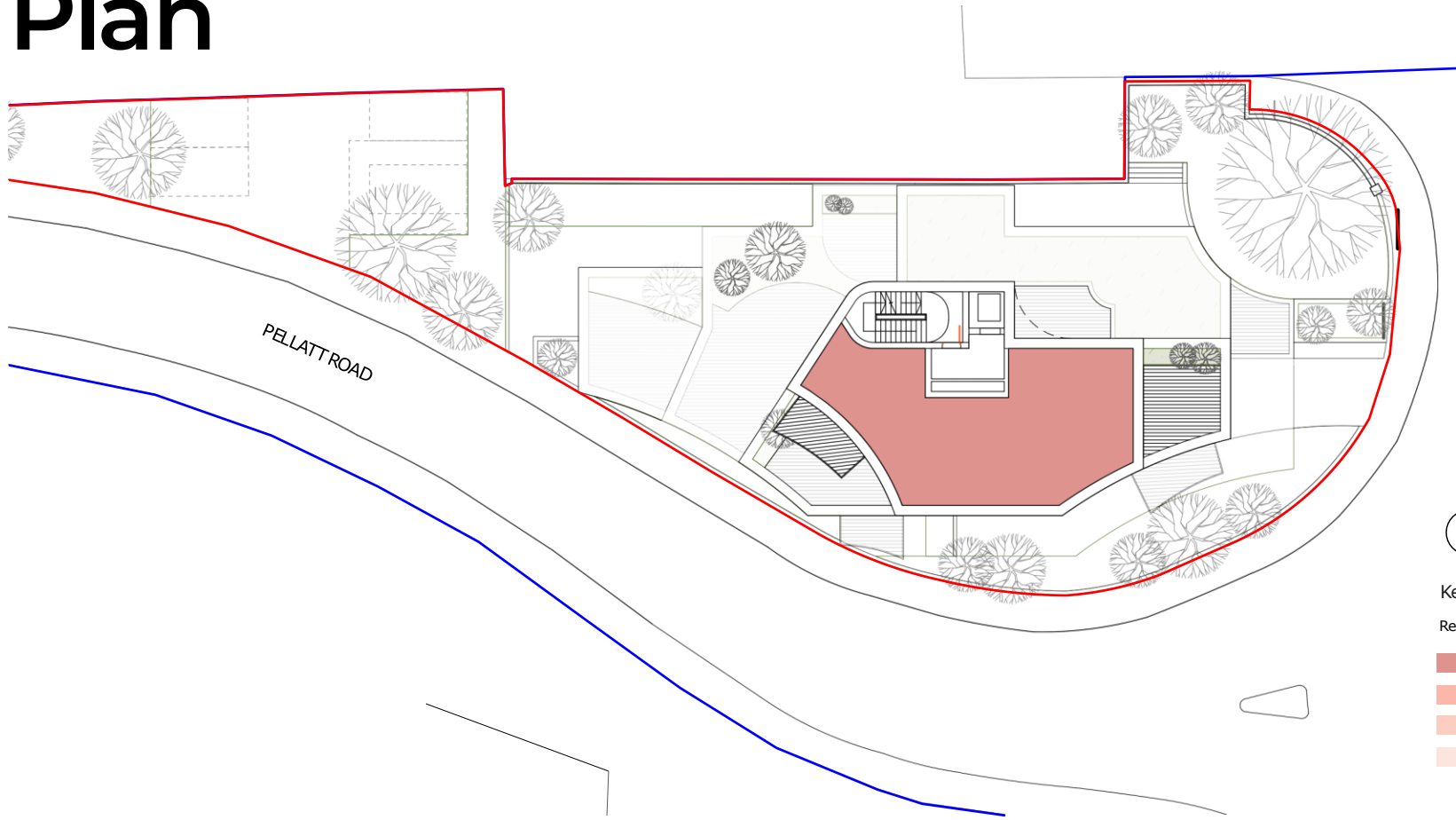


PELLATT ROAD

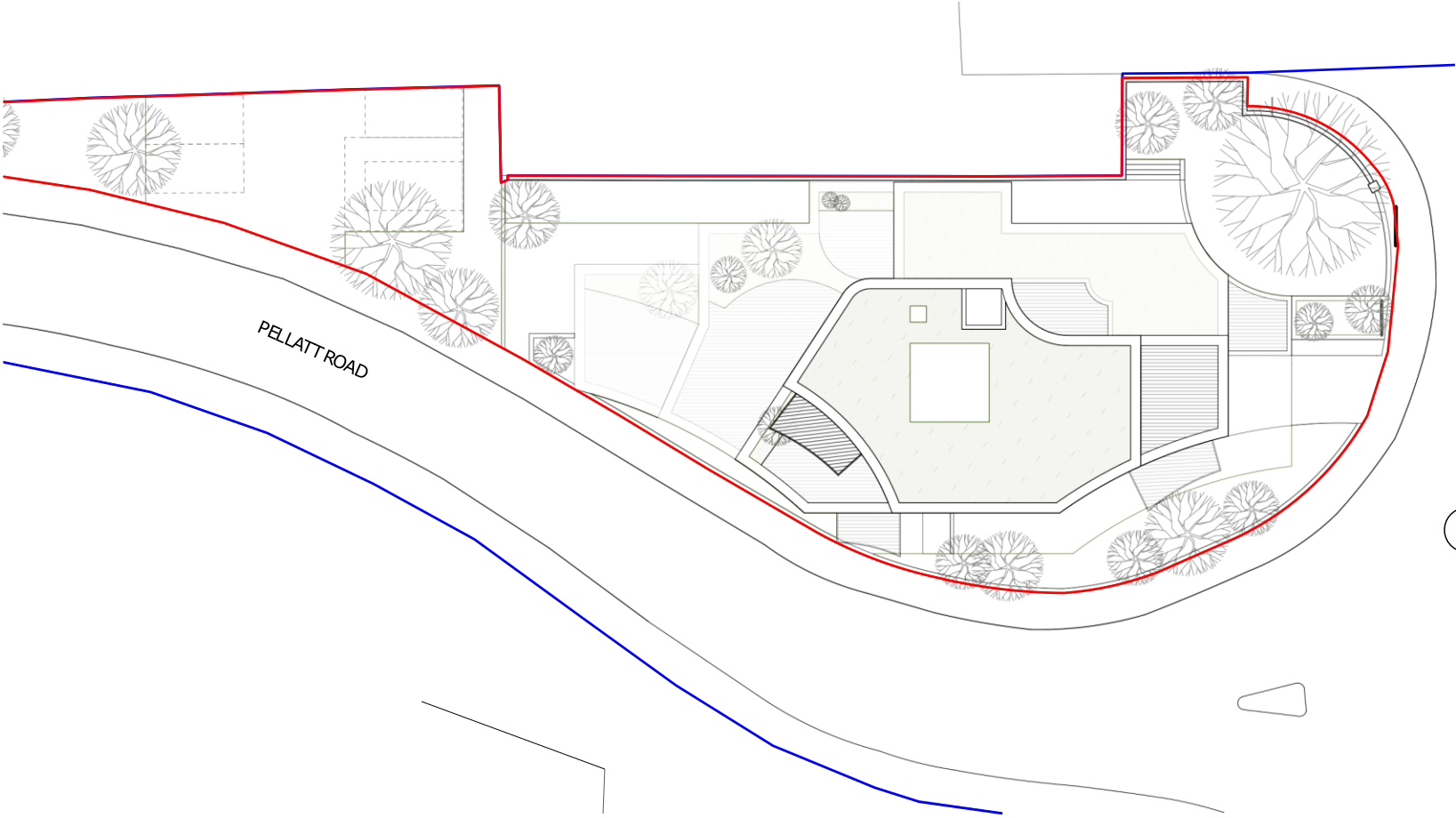


- Key
- Residential
- 3 Bedroom 5 Person Home
  - 2 Bedroom 4 Person Home
  - 2 Bedroom 3 Person Home
  - 1 Bedroom 2 Person Home

# Fourth Floor Plan



# Roof



# Green roof and terraces



# Landscape vision



# Benefits



**Much needed first time buyer and family homes**



**High quality sustainable development**



**Transforming underutilised land**



**Communal outdoor terraces**



**Comprehensive replacement landscaping**

# Thank you



 **communityUK**