



View Towards Entrance

The site is located on the Goldsworth Park Estate, to the south of Goldsworth Park Lake and to the north of the Goldsworth Park Centre, about 1.5 miles to the west of Woking Town Centre. It is accessed via the road adjacent to St Andrews Church and the Generation Centre. It has wooded open space to the north, east and west with two-storey residential properties beyond.

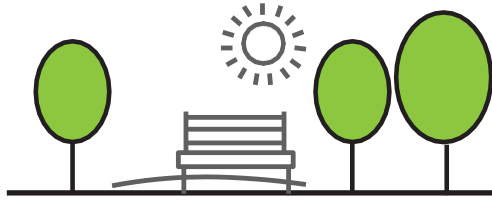
The site has been selected due to its proximity to local amenities including retail and leisure facilities and ready access to public transport.

## THE SITE



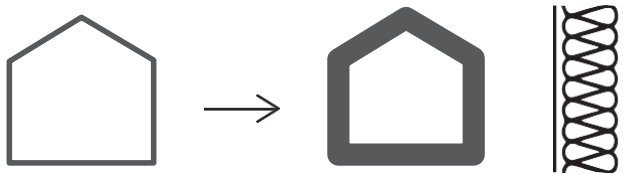
Short Breaks gives adults with learning disabilities and/or autism a change from their daily routine and an opportunity to socialise in their community outside of their family home, whilst enabling their family carer to maintain their own health and well-being by providing a break from their caring responsibilities.

The overall aim is to provide sensitive and sustainable specialist accommodation tailored to the needs of the residents



### 1. SURREY'S GREEN AGENDA

- Surrey's Climate Change Strategy
- Surrey's New Tree Strategy
- Improve well-being
- Provide natural habitat



### 2. FABRIC FIRST

- Energy efficient outer skin
- Reduce running costs
- Address fuel poverty
- Better temperature control



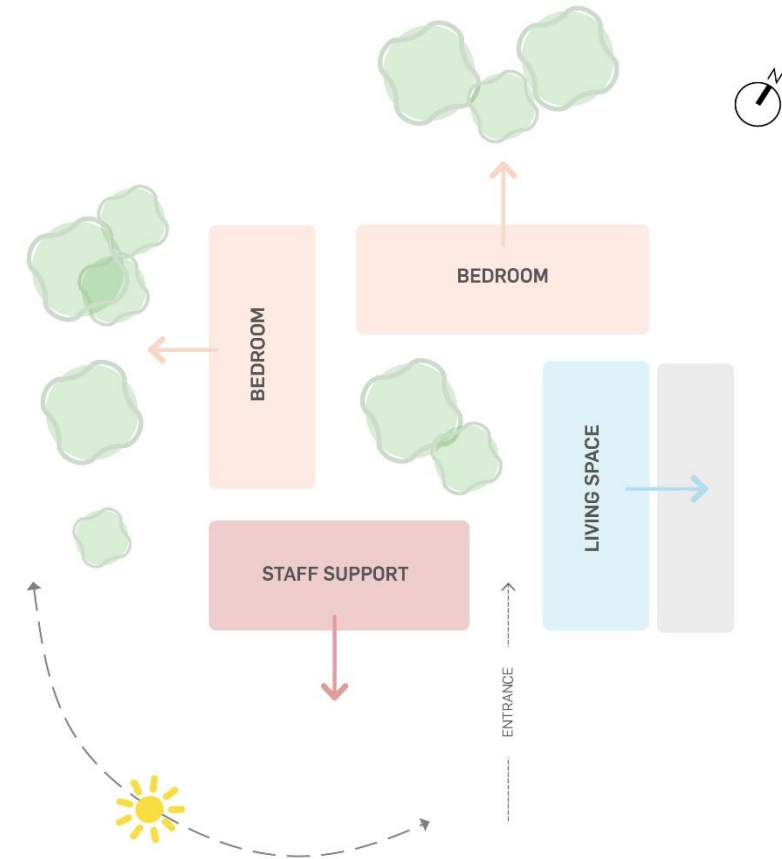
### 3. RENEWABLE ENERGY ON-SITE

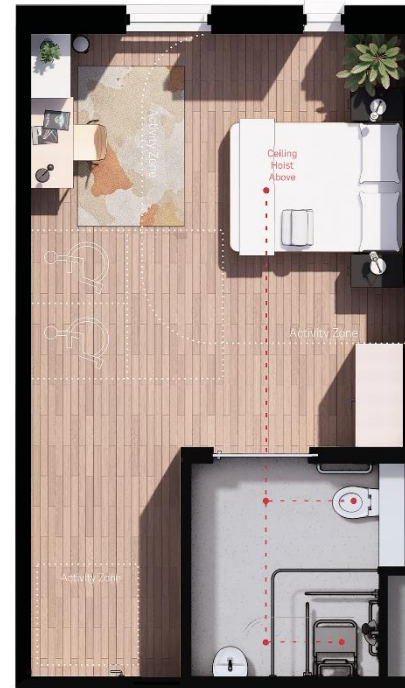
- Reduce carbon emissions
- Cleaner, healthier environment
- Sustainable and self sufficient energy



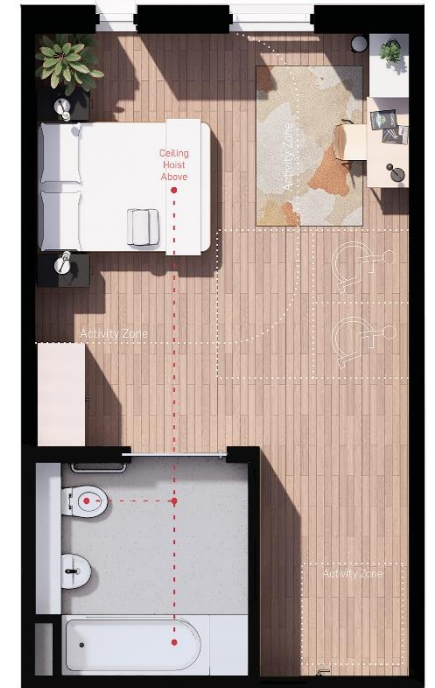
Entrance View of Proposed Building

- **Single storey new building**
- **8 no. wheelchair accessible bedrooms**
- **Living room, dining room, kitchen, sensory room and bespoke landscaped gardens**
- **Staff support area**
- **Parking for staff and visitors**





Typical bedroom with shower



Typical bedroom with bath

 Bedroom Wings

 Communal Areas

 Staff Areas



Internal Courtyard

SHORT BREAKS



- 1. 6no. parking spaces
- 2. Communal gardens
- 3. Drop-off point
- 4. Raised deck
- 5. Feature trees to 'plug' gaps
- 6. Kitchen garden
- 7. Bioretention / rain garden
- 8. Courtyard garden

## SITE AERIAL VIEW



RAL 8024

**Facade** - Terracotta plain and profiled tiles



RAL 8024

**Facade** - Terracotta baguette fins



RAL 7034

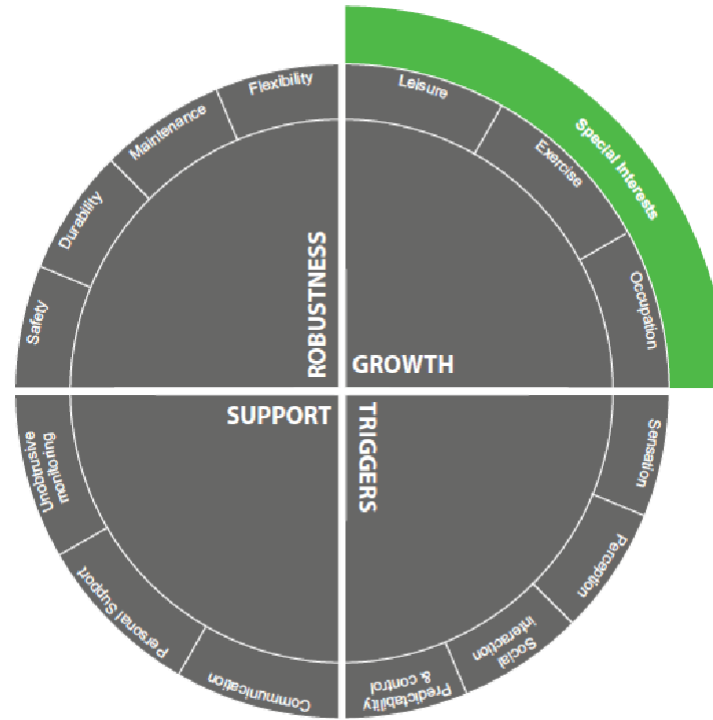
**Windows / Doors** - PPC aluminium / timber composite



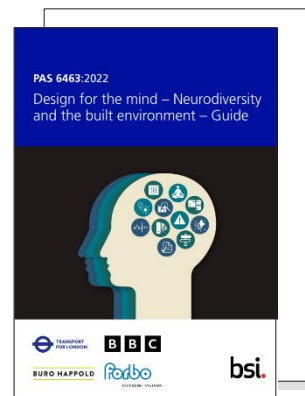
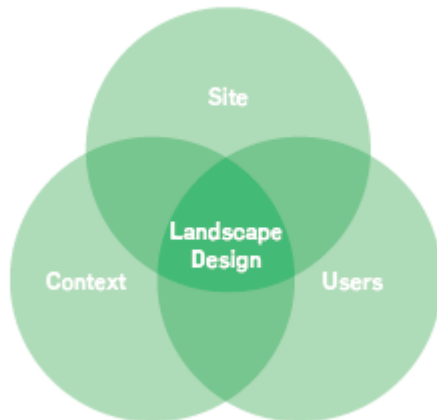
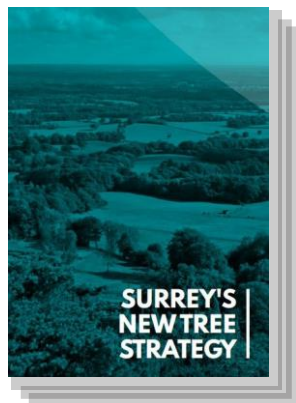
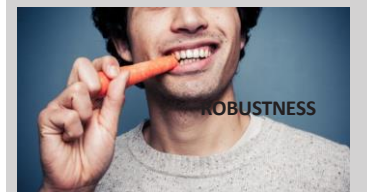
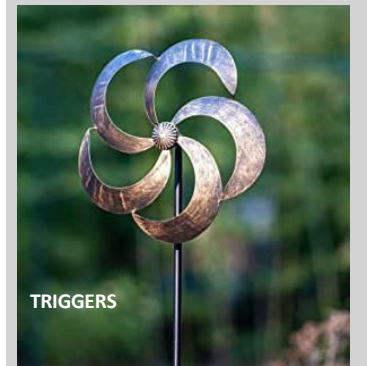
Areas to Relax and Socialise

**SHORT BREAKS**

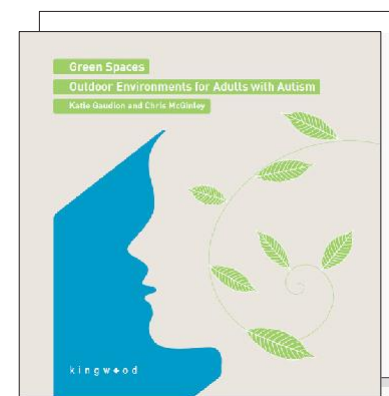
- Tailored to the users' specific needs.
- Create a meaningful connection to nature.
- Accommodate different uses and activities.
- A place for residents and staff to interact with others and nature.
- Underpinned by Surrey County Council's ambitious green agenda.



Best Practice Principles



PAS 6463:2022

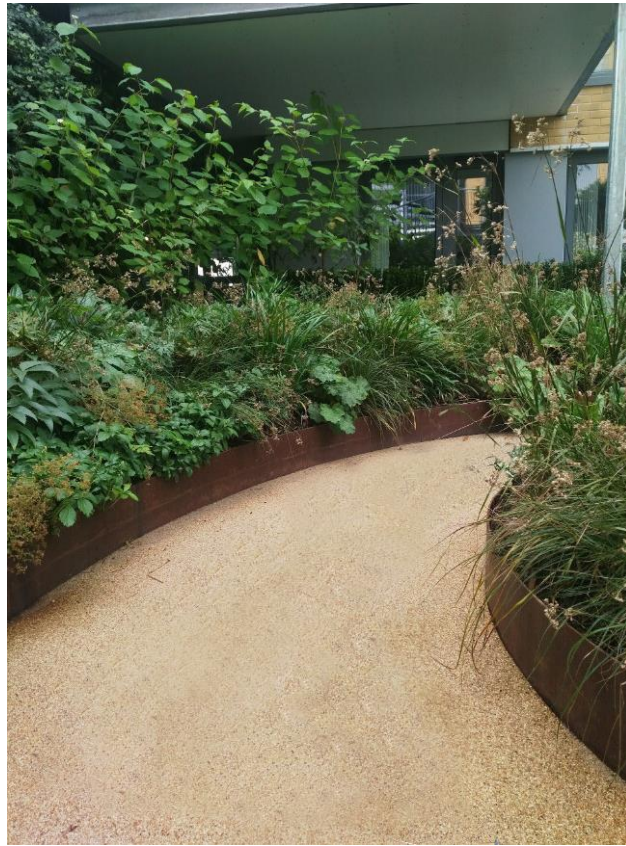


**'BY 2030, SURREY WILL BENEFIT FROM 1.2 MILLION NEW TREES, WITH THE RIGHT TREES PLANTED IN THE RIGHT PLACE, INCLUDING BOTH URBAN AND RURAL LOCATIONS, AND SUPPORTED TO GROW TO MATURITY.'**

Some of the ecology and biodiversity improvements we want to make:

- Retained and enhanced woodland
- A rain garden for various species to enjoy
- New hedgerows with more native plants
- Deadwood log piles near the boundaries
- Bat and bird boxes and insect houses
- Fencing that allows small animals to pass through





**STIMULATION,  
USER EXPERIENCE**



**RECREATION OPPORTUNITIES &  
INTERESTING FEATURES**



**ROBUST MATERIALS  
AND FEATURES**



**SUPPORTIVE,  
SAFE ENVIRONMENT**

**A Sensitive Connection to Nature**

**LANDSCAPE**



Thank you