



View Towards Entrance

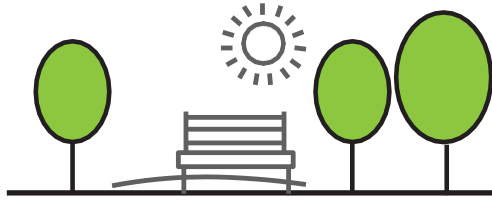
The site is located at the junction of The Horseshoe and Bolters Lane, surrounded by significant trees and vegetation.

There is open space to the north of the site, 2-storey houses to the east and south and, beyond the former Bentley Day Centre site, there are three storey residential care homes to the south and west.



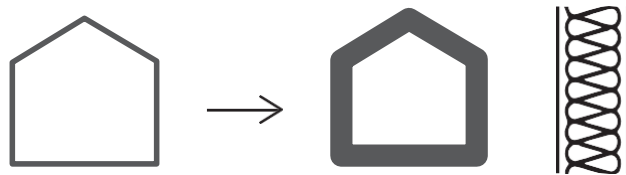
Short Breaks gives adults with learning disabilities and/or autism a change from their daily routine and an opportunity to socialise in their community outside of their family home, whilst enabling their family carer to maintain their own health and well-being by providing a break from their caring responsibilities.

The overall aim is to provide sensitive and sustainable specialist accommodation tailored to the needs of the residents



### 1. SURREY'S GREEN AGENDA

- Surrey's Climate Change Strategy
- Surrey's New Tree Strategy
- Improve well-being
- Provide natural habitat



### 2. FABRIC FIRST

- Energy efficient outer skin
- Reduce running costs
- Address fuel poverty
- Better temperature control



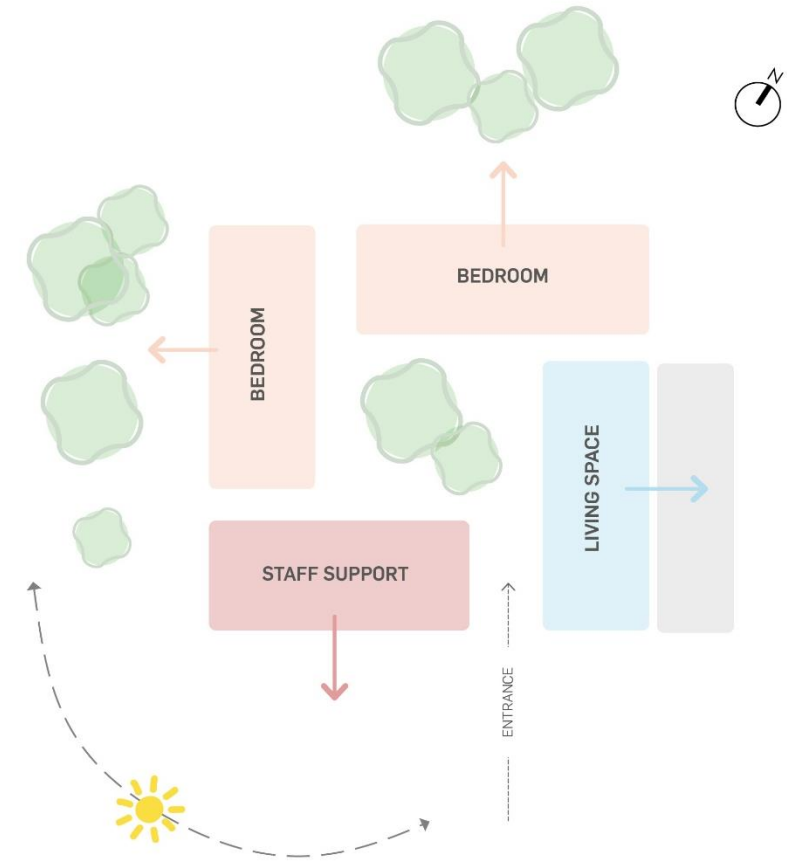
### 3. RENEWABLE ENERGY ON-SITE

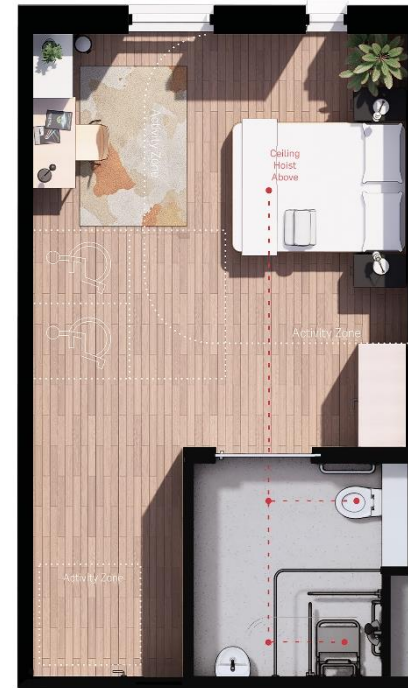
- Reduce carbon emissions
- Cleaner, healthier environment
- Sustainable and self sufficient energy



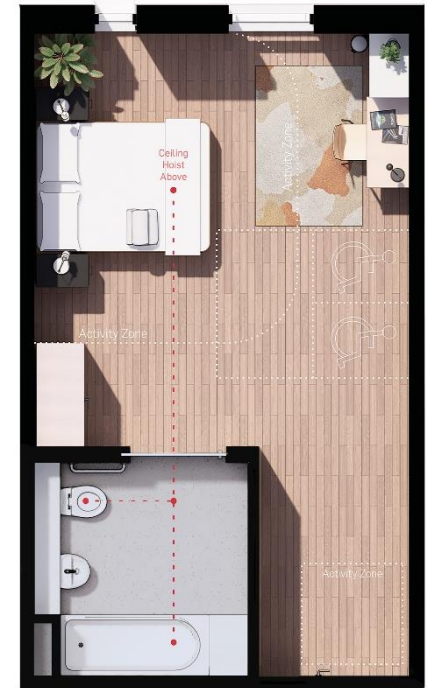
Entrance View of Proposed Building

- **Single storey new building**
- **8 no. wheelchair accessible bedrooms**
- **Living room, dining room, kitchen, sensory room and bespoke landscaped gardens**
- **Staff support area**
- **Parking for staff and visitors**





Typical bedroom with shower



Typical bedroom with bath

- Bedroom Wings
- Communal Areas
- Staff Areas



Internal Courtyard

SHORT BREAKS



- 1. 6 no. parking spaces
- 2. Communal terrace
- 3. Drop-off point
- 4. Woodland edge planting and nature trail
- 5. Wild flower meadow
- 6. Courtyard garden

**Entrance**

# SITE AERIAL VIEW



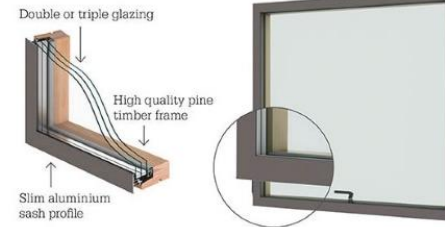
RAL 8024

**Facade** - Terracotta plain and profiled tiles



RAL 8024

**Facade** - Terracotta baguette fins



RAL 7034

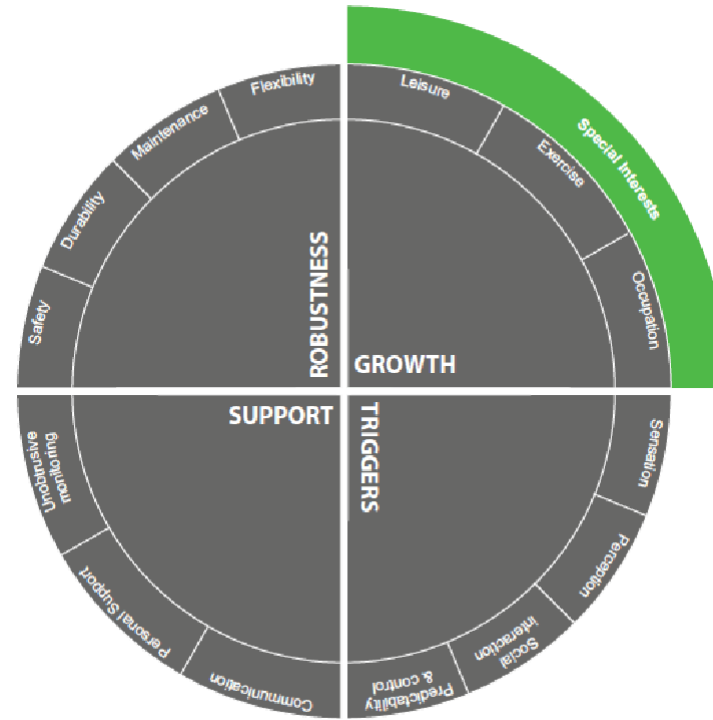
**Windows / Doors** - PPC aluminium / timber composite



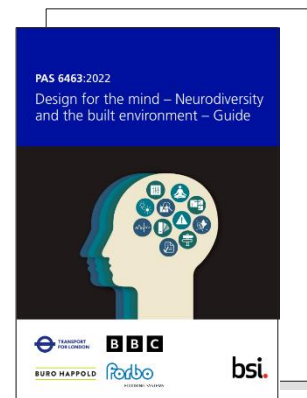
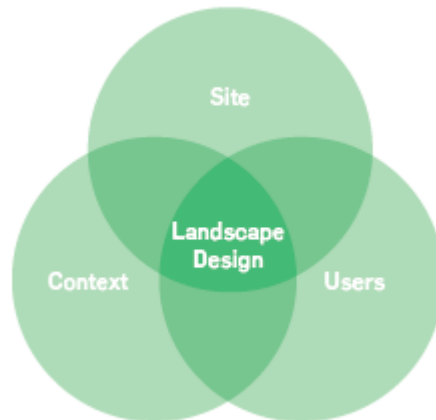
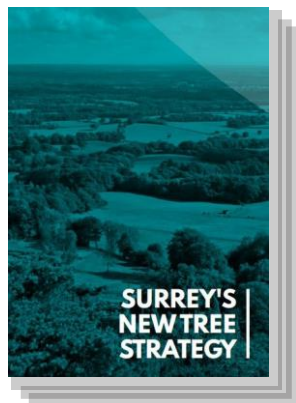
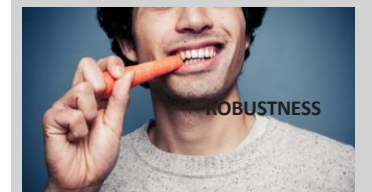
Areas to Relax and Socialise

**SHORT BREAKS**

- Tailored to the users' specific needs.
- Create a meaningful connection to nature.
- Accommodate different uses and activities.
- A place for residents and staff to interact with others and nature.
- Underpinned by Surrey County Council's ambitious green agenda.



Best Practice Principles



PAS 6463:2022

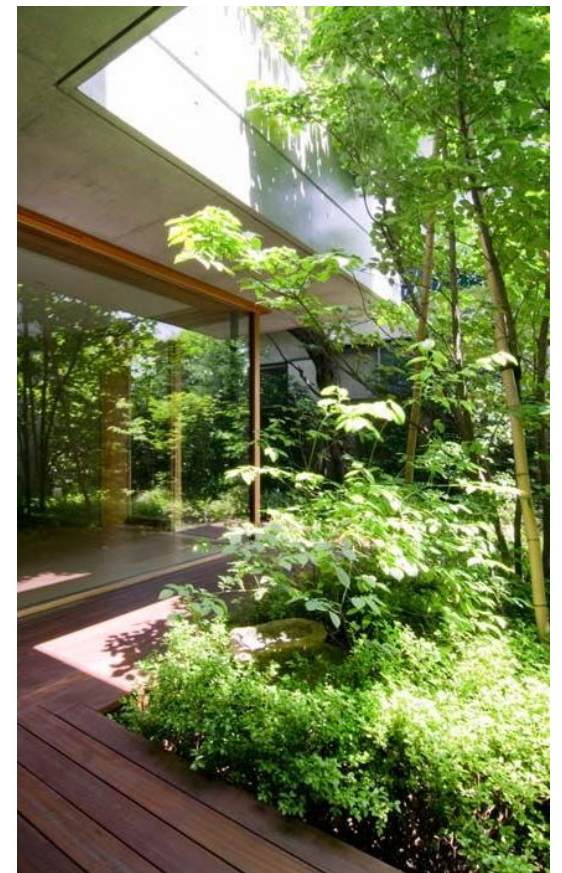


**'BY 2030, SURREY WILL BENEFIT FROM 1.2 MILLION NEW TREES, WITH THE RIGHT TREES PLANTED IN THE RIGHT PLACE, INCLUDING BOTH URBAN AND RURAL LOCATIONS, AND SUPPORTED TO GROW TO MATURITY.'**

Some of the ecology and biodiversity improvements we want to make:

- Retained and enhanced woodland
- New hedgerows with more native plants
- Deadwood log piles near the boundaries
- Bat and bird boxes and insect houses
- Fencing that allows small animals to pass through





**STIMULATION,  
USER EXPERIENCE**



**RECREATION OPPORTUNITIES &  
INTERESTING FEATURES**



**ROBUST MATERIALS  
AND FEATURES**



**SUPPORTIVE,  
SAFE ENVIRONMENT**

**A Sensitive Connection to Nature**

**LANDSCAPE**



Thank you