



Supporting you to live your life...

BROCKHURST EXTRA CARE



“Extra Care” is an umbrella term, commonly used to describe settings supporting people receiving publicly funded rental housing with care and support. Other terms including “assisted living”, “retirement village” and “continuing care retirement community” are used by operators of settings whose residents are funded privately.

Research carried out by Surrey County Council's Adult Social Care team has identified a growing need for affordable Extra Care accommodation within the Borough of Runnymede which is not being satisfied; either by existing settings or by developments currently being planned.



Site location



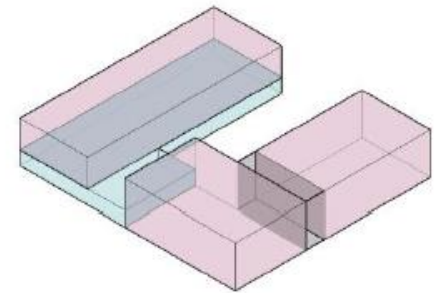
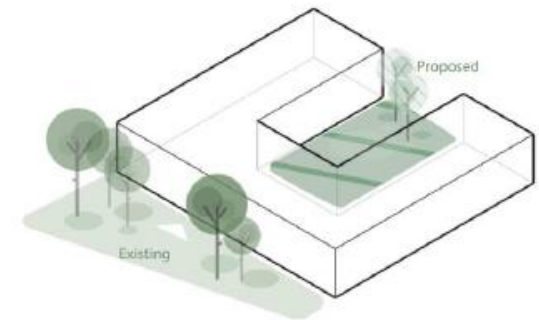
The Brockhurst site is located at the junction of Brox Road and Slade Road in Ottershaw village. It is situated in a predominantly residential area comprising of 2-3-storey single family homes, with a GP surgery, convenience stores and the village hall nearby.

We propose to retain the existing vehicle access from Brox Road, with a separate pedestrian entrance close to the bus stop.

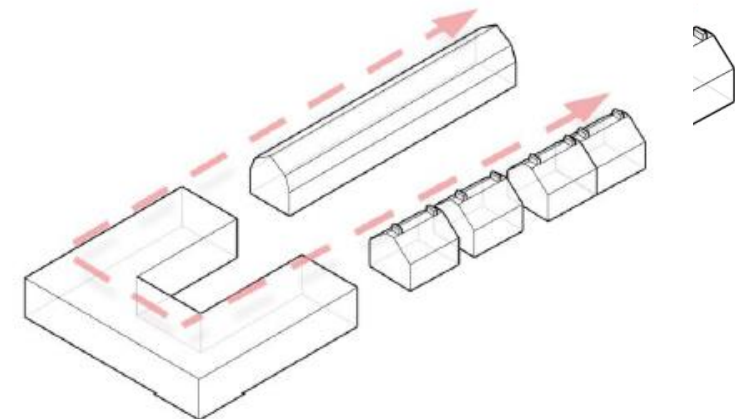
The Care Home that previously occupied the site was demolished in 2021.



THE SITE

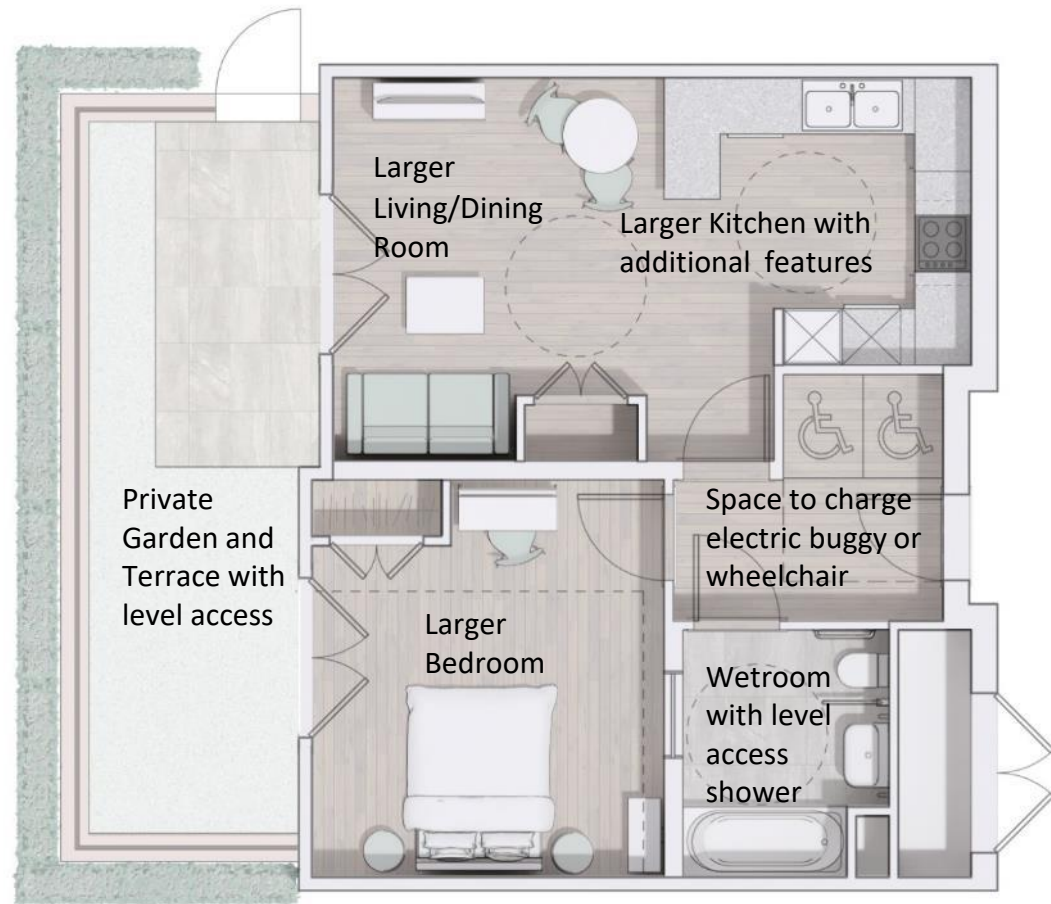


Residential
Communal

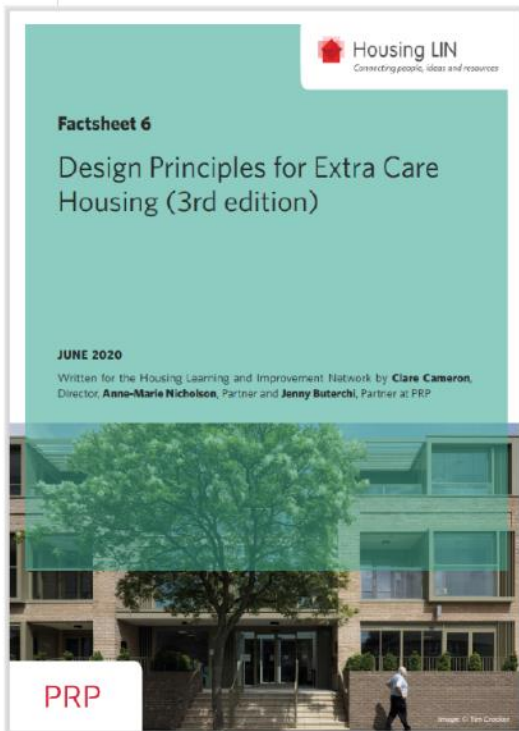
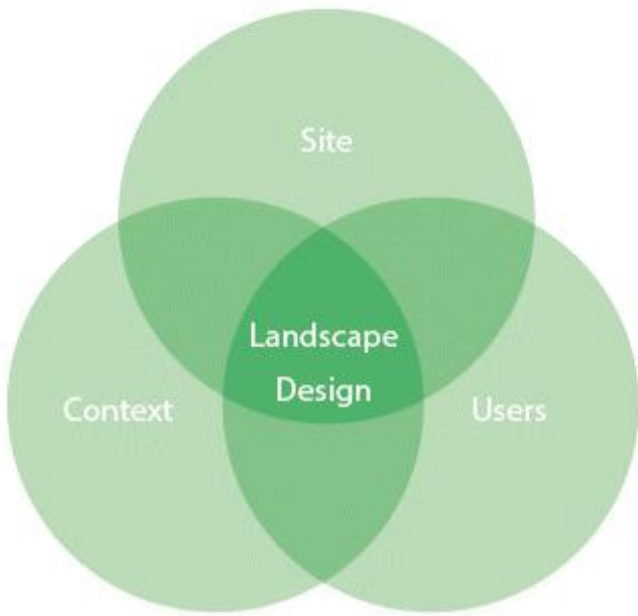




1-Bedroom, 2-Person Accessible and Adaptable Apartment



1-Bedroom, 2-Person Apartment designed for a wheelchair user



BIODIVERSITY ENHANCEMENTS



CONNECTIONS



SOCIAL



WOODLAND GLADE



1. Social amenity space
2. Existing trees retained
3. Boundary screening for increased biodiversity
4. Vehicle access
5. Private gardens
6. Communal terrace



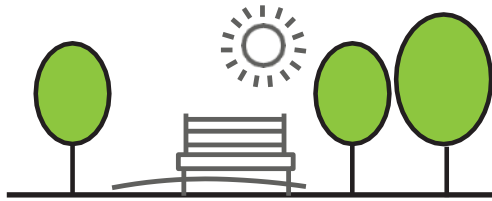
Some of our proposed ecology and biodiversity enhancements are listed below:

- The inclusion of deadwood / log piles from tree works on site. These would typically be proposed near the boundaries
- The inclusion of bat and bird boxes within the landscape scheme
- Ensuring any fencing includes gaps at the base for hedgehog movement
- Installation of insect houses in appropriate locations



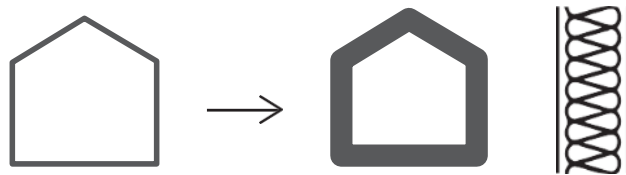
Mother Shipton Moth





1. SURREY'S GREENER FUTURE

- Surrey's New Tree Strategy
- Improve well-being
- Provide natural habitat



2. FABRIC FIRST

- Energy efficient envelope
- Reduce running costs
- Address fuel poverty
- Better temperature control



3. RENEWABLE ENERGY ON-SITE

- Reduce carbon emissions
- Cleaner, healthier environment
- Sustainable and self sufficient energy



Thank you

