

Development Management Forum

Great Ormond Street Hospital Children's Cancer Centre (GOSH CCC),
Great Ormond Street, London, WC1N 3JH



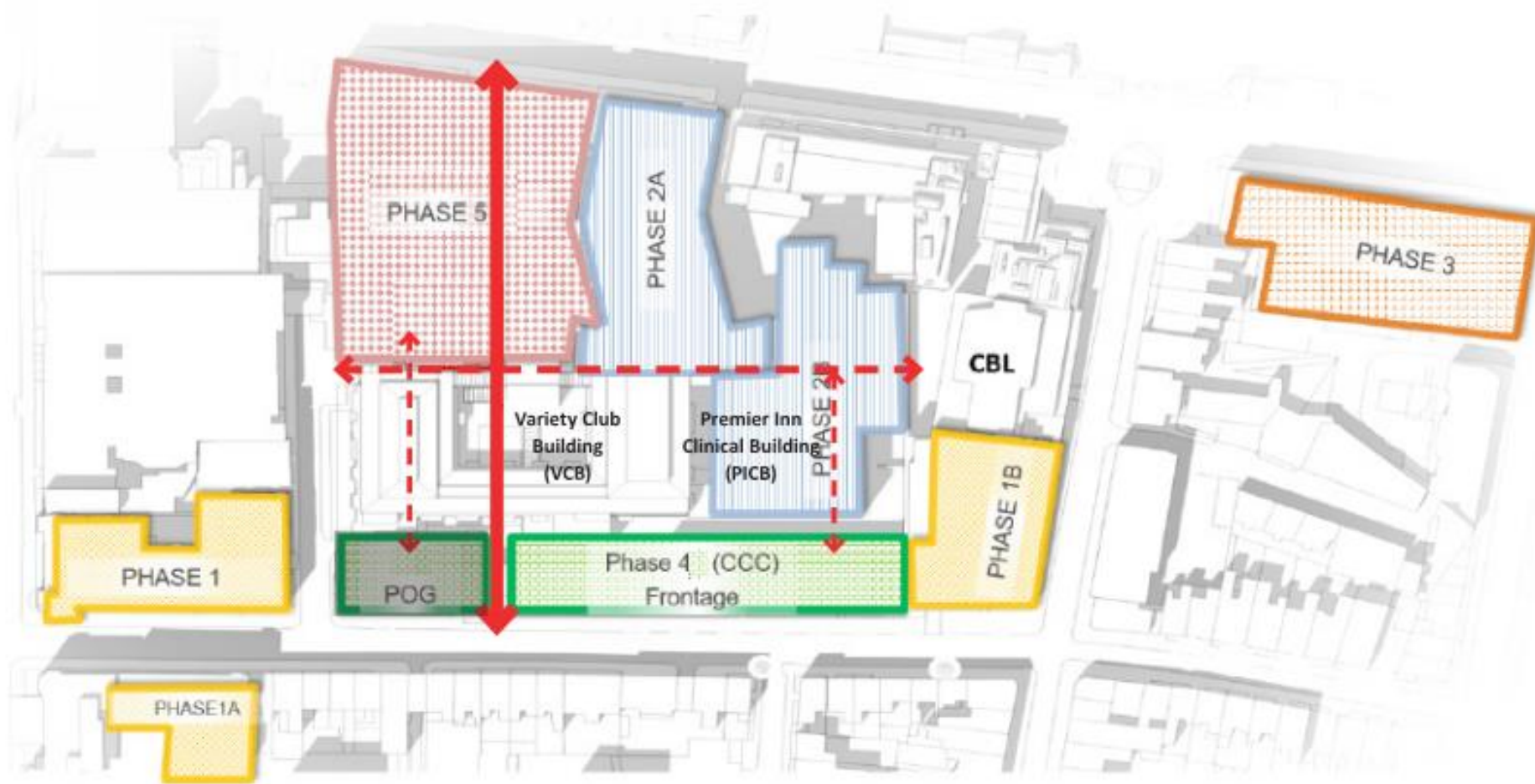
Tuesday
1st February 2022

Proposals

- Complete demolition of existing frontage building.
- Erection of replacement 7 storey building above ground level, with two storey basement and recessed plant enclosure at roof level with landscaped garden area above.
- The objectives of the current scheme (Phase 4) are to replace the majority of the buildings along the Great Ormond Street frontage with a new building to house a Children's Cancer Centre, which will provide a national resource for children with rare and difficult-to-treat cancers.

Proposed phasing of GOSH Masterplan

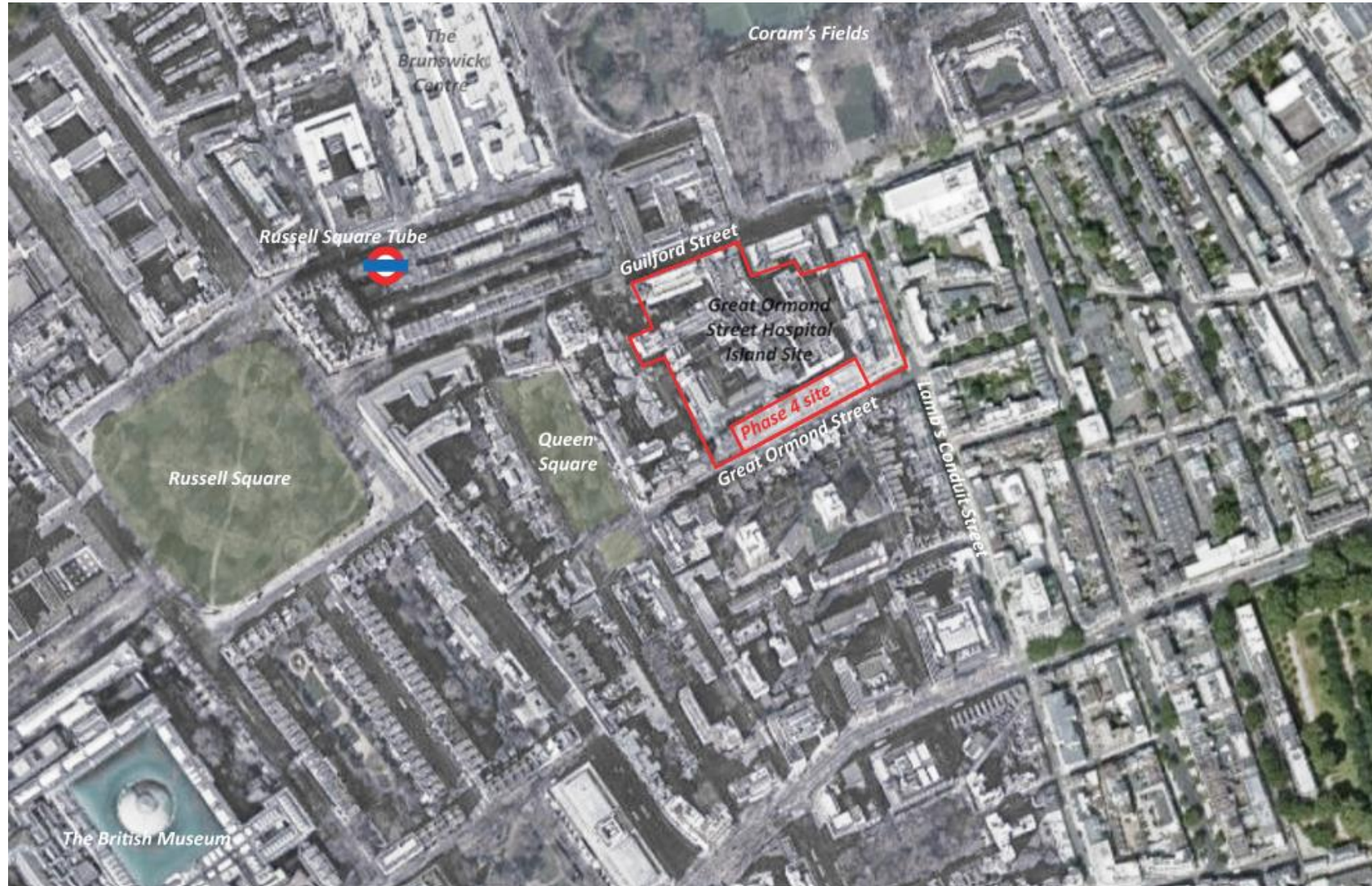
The Children's Cancer Centre at Great Ormond Street Hospital
The Redevelopment Masterplan at GOSH - Phase 4



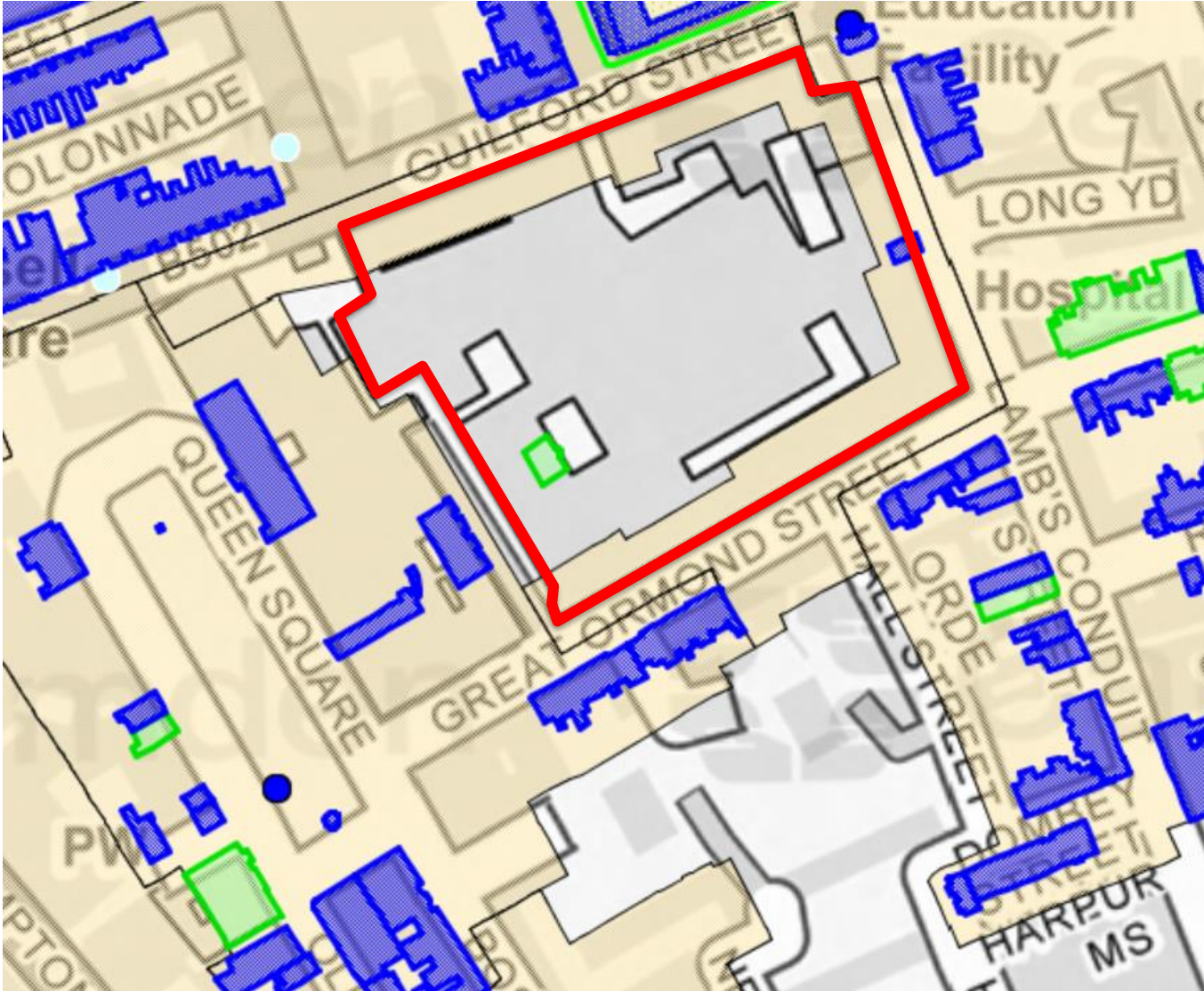
Planning context

- Site Location
- Planning Designations
- Planning Decision Making Framework
- Main Planning Considerations

Site location

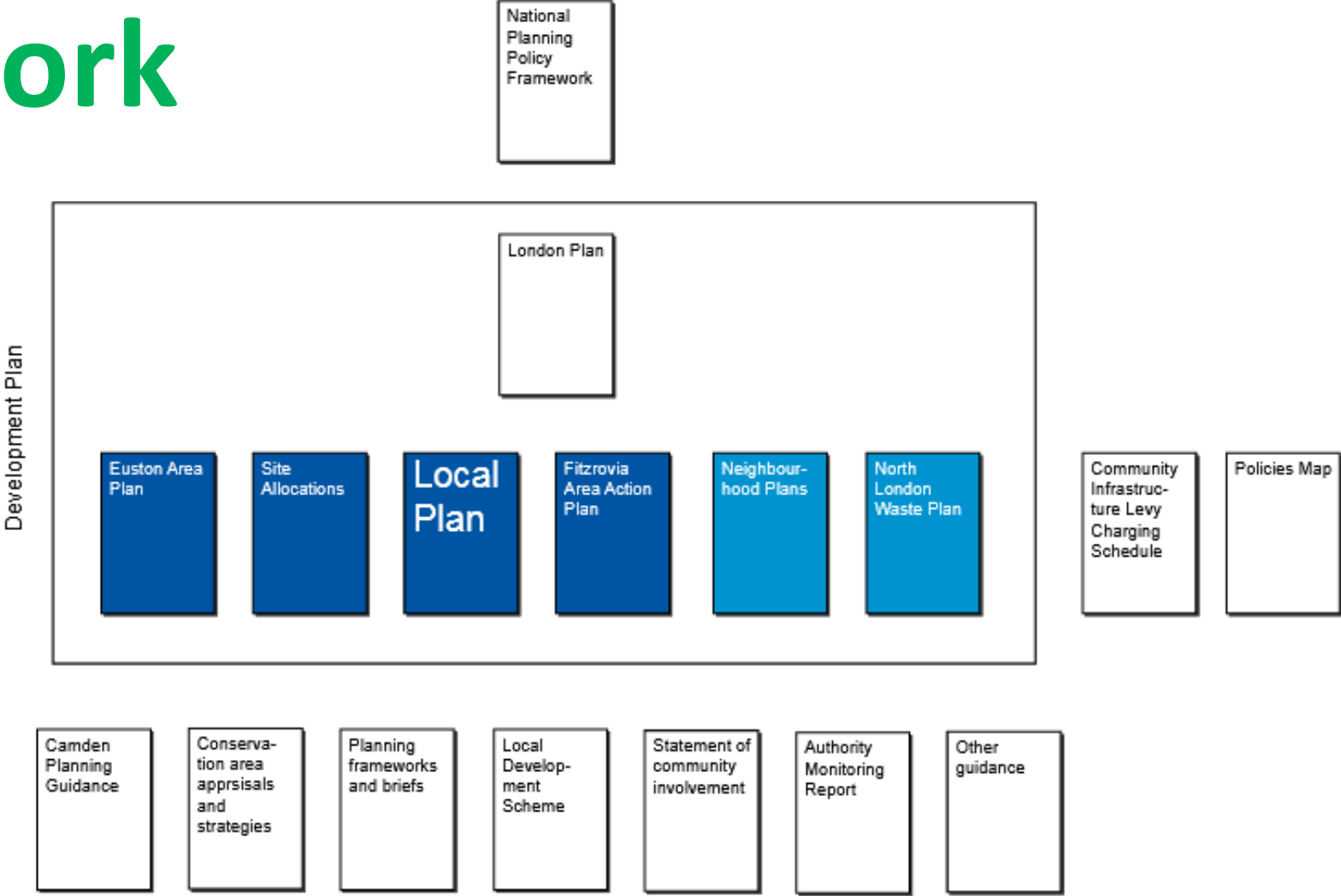


Site Designations Map



- Bloomsbury Conservation Area (yellow).
- Listed buildings (Grade II blue, Grade II* green).
- Central London Area.

Planning decision making framework



Main planning considerations

- Design and Heritage (Conservation area impacts, height, scale, massing, character)
- Transport and Highways (Construction Impacts, Servicing, Public Transport, Access to and from the site)
- Impact on neighbouring amenity (Daylight/Sunlight, overlooking, overshadowing, noise and disturbance from demolition and construction works)
- Sustainability and Air Quality (Demolition, Climate Change, Energy)