

An architectural rendering of a modern building named 'The James Chiswick'. The building features a curved facade with large glass windows and a prominent overhang. The ground floor is filled with lush greenery, including palm trees and ferns, visible through the glass. Several people are shown walking and riding bicycles on the sidewalk in front of the building. The scene is set during the day with soft lighting, suggesting a pleasant urban environment.

The James Chiswick

The James

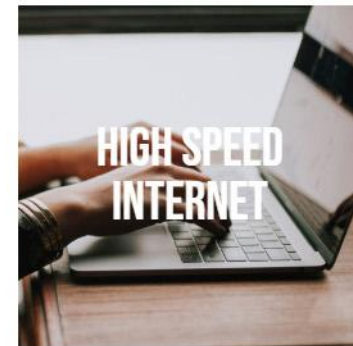
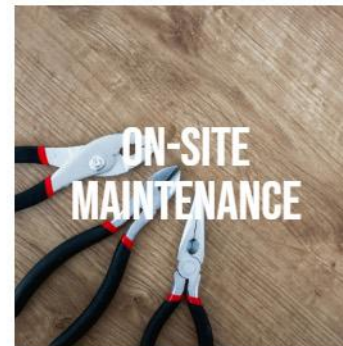
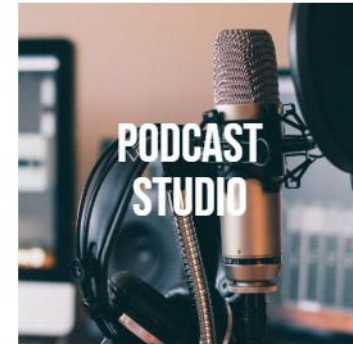
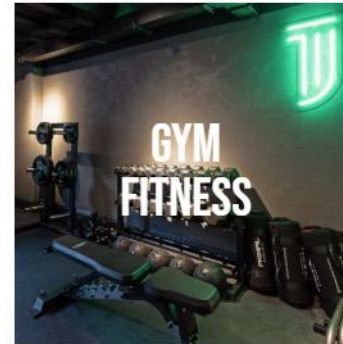
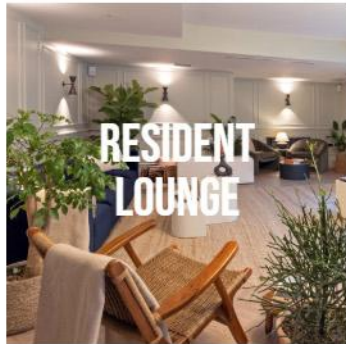
A co-living operator building co-living communities across the UK



Elsewhere in the UK

The James

Features of co-living



THE JAMES

Projects by The James





DELIVERABILITY



AFFORDABLE FAMILY HOMES
AND CO-LIVING



LOCAL
AMENITIES



HEALTHY HOMES

PROJECT AIMS



EMPLOYMENT
OPPORTUNITIES



GOLDEN MILE GATEWAY
LANDMARK



IMPROVED PEDESTRIAN
AND CYCLIST EXPERIENCE

Benefits of co-living for this site

Relieving pressure on existing housing stock

Offering greater choice of housing types for renters

Diverting demand away from HMOs (Homes of Multiple Occupation)

Releasing lower cost HMOs for those on lower incomes

Releasing HMO and sharer stock back to single family homes



THE JAMES

Location



Location

EALING

ACTON

GOLDEN MILE VISION

CHISWICK

Stford
orth

RD

KEW



The LMC Campus

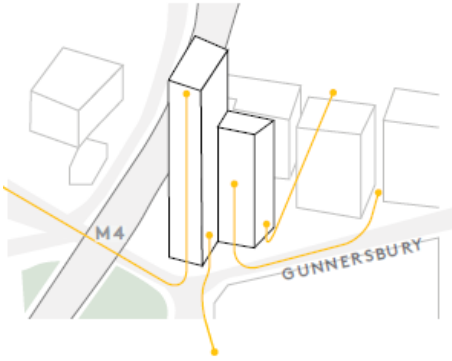


THE JAMES

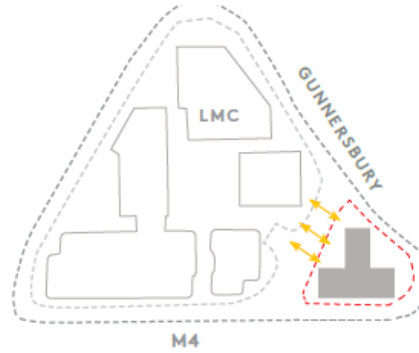
Consented scheme



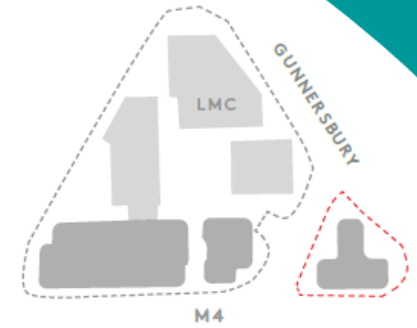
Design Concepts



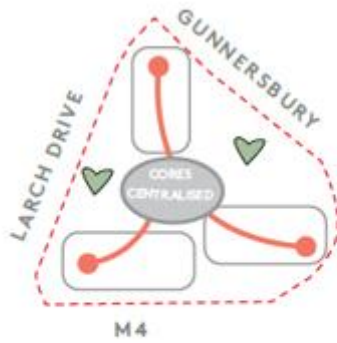
TRANSFORMING AN ISLAND SITE



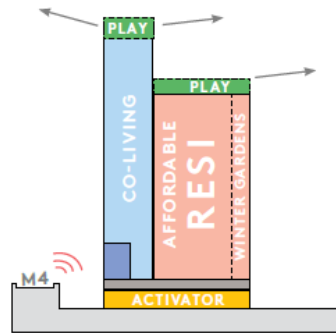
FORWARD THINKING



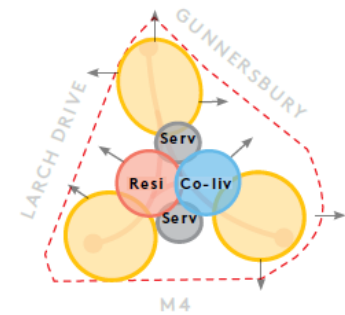
A CONTINUATION OF LMC



THE TRICORN



STRATEGIC POSITIONING



ECONOMIC ACTIVATING GROUND FLOOR



THE JAMES

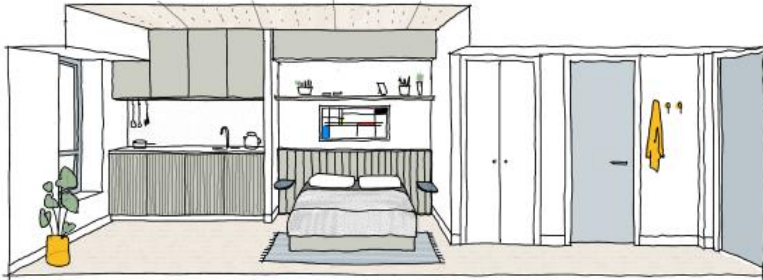
Affordable housing quality



7th Floor

THE JAMES

Co-living quality



The pink areas show affordable homes
The blue areas show the co-living units



7th Floor

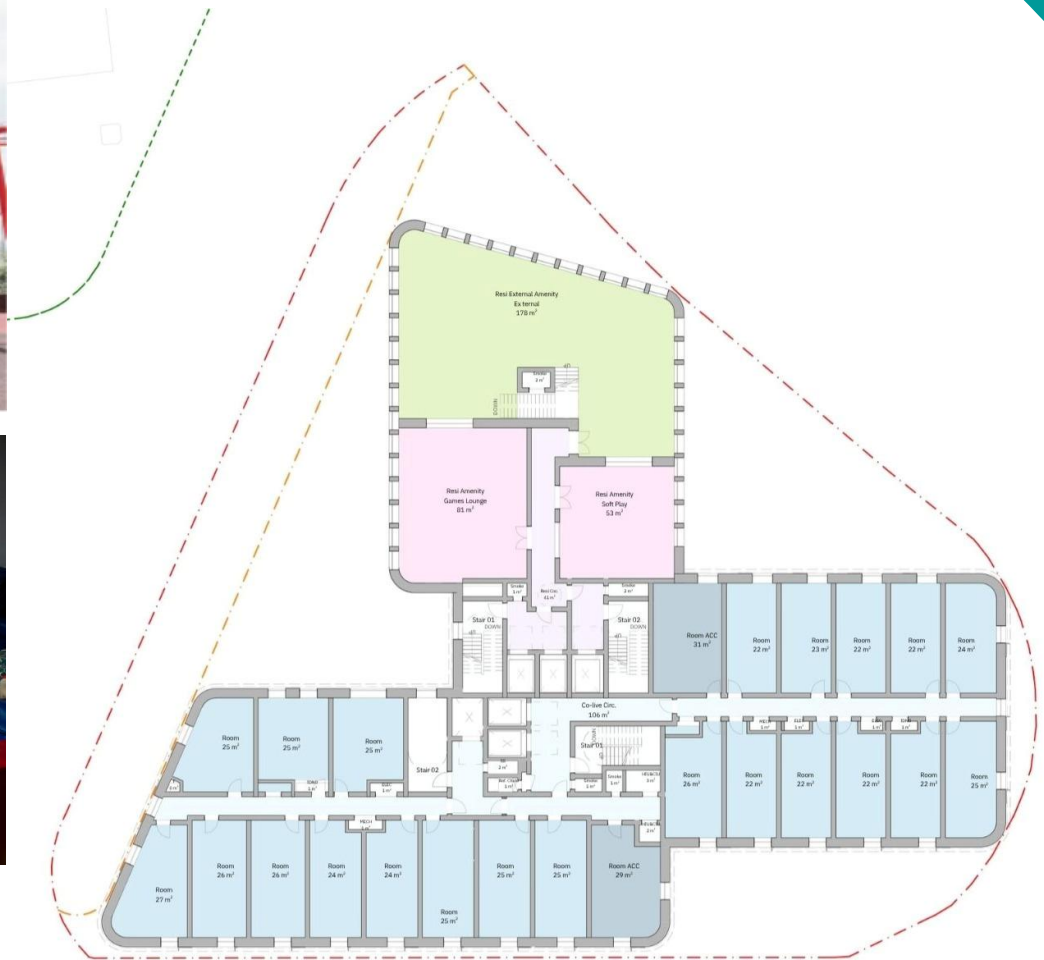
THE JAMES

16th floor affordable amenities

①



②



25th floor co-living amenities

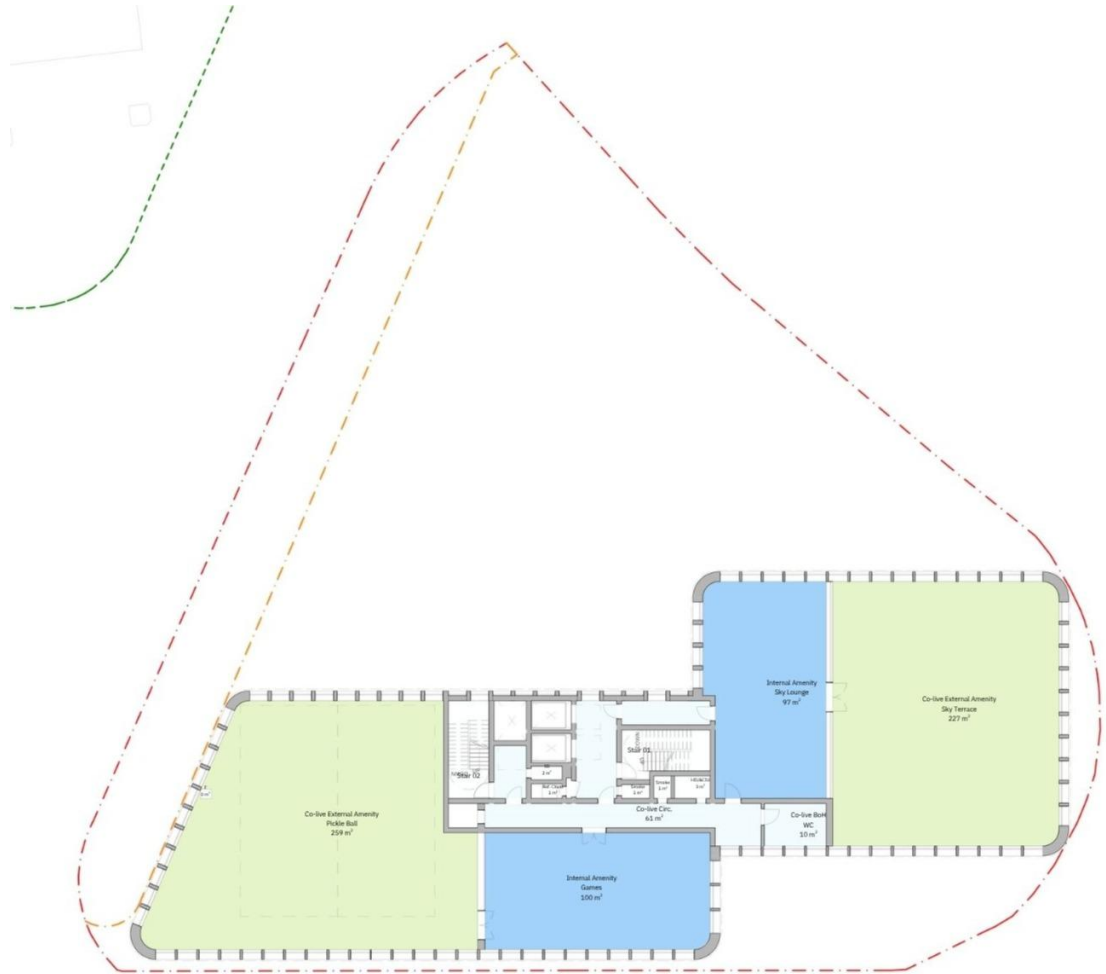
①

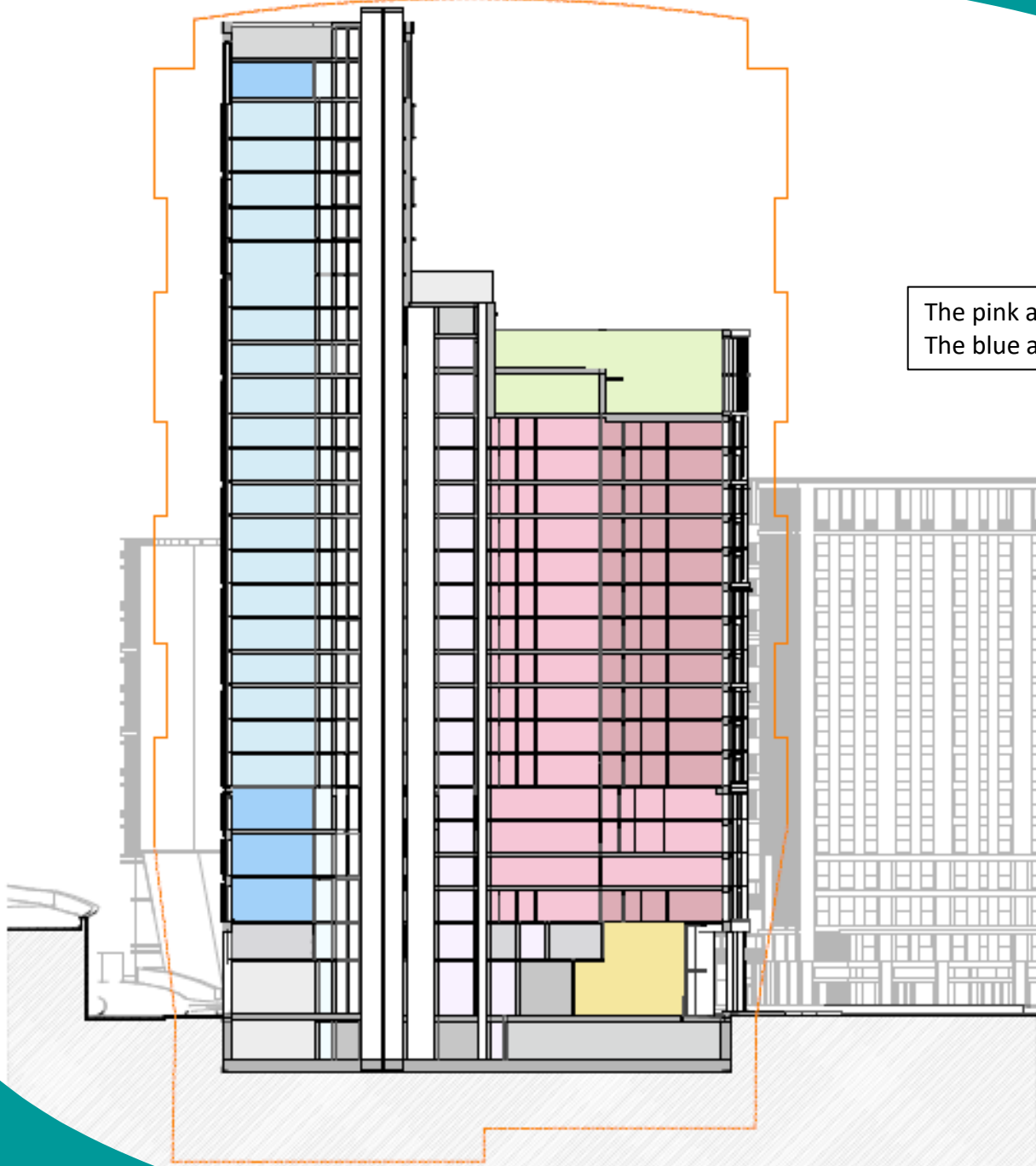


②



③



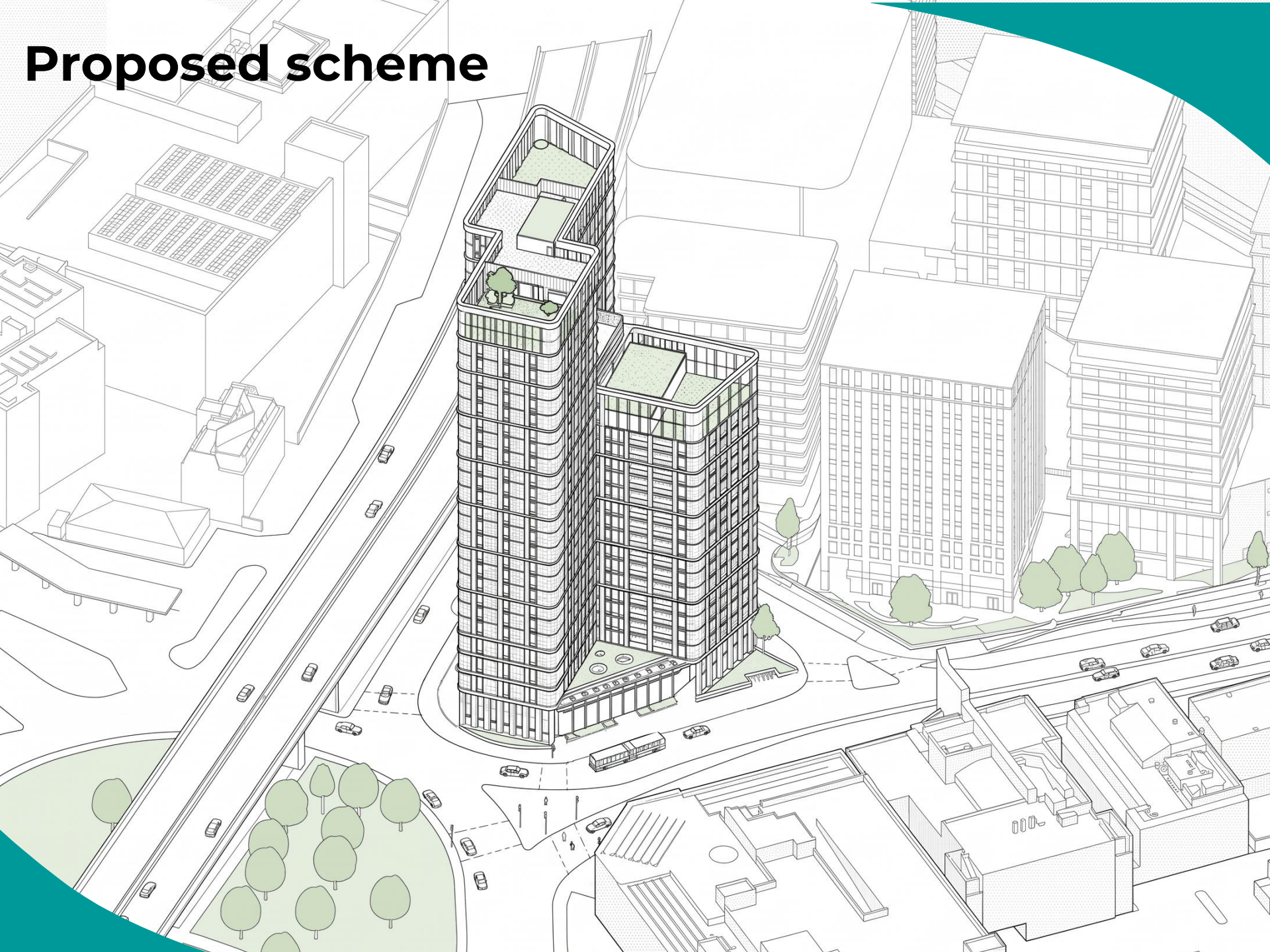


The pink areas show affordable homes
The blue areas show the co-living units



THE JAMES

Proposed scheme



View from Gunnersbury Road



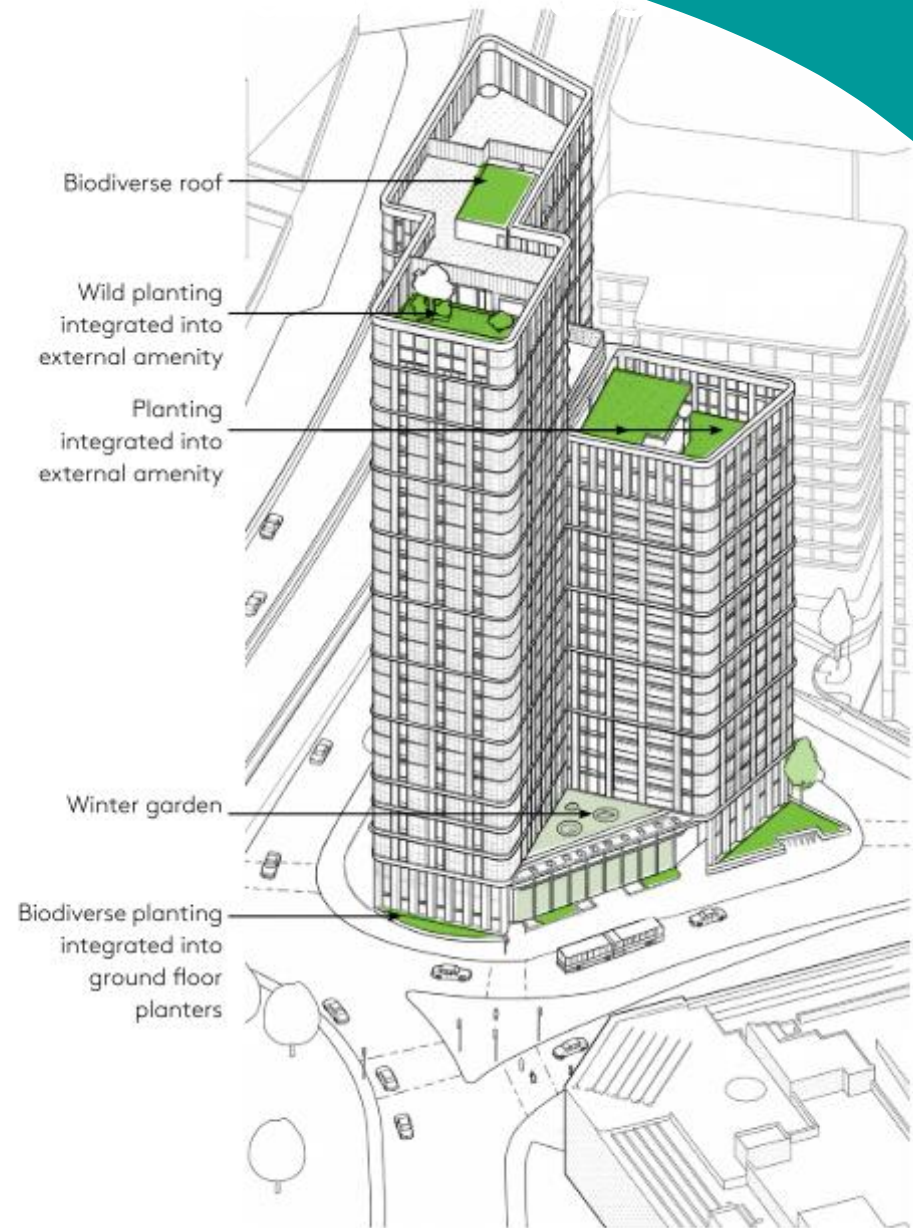
View of the entrance approach



View from Chiswick roundabout crossing



Biodiversity



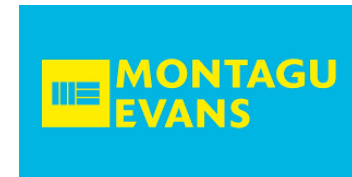
THE JAMES

Benefits

-  **Affordable family homes and new co-living apartments**
-  **Urban greening and more local amenities**
-  **Improved pedestrian and cyclist accessibility**
-  **Realistically deliverable**



Thank you



THE JAMES