

An architectural rendering of a modern residential development. The scene features several multi-story buildings with a mix of brick and wood-clad facades. A paved walkway with a brick pattern runs through the center, where a person is walking a dog. In the background, a blue vintage car is parked. The sky is bright with light clouds, and there are trees and shrubs throughout the scene.

Forest Side

July 2022 consultation

Existing site

Victoria Road

Forest Side

Site

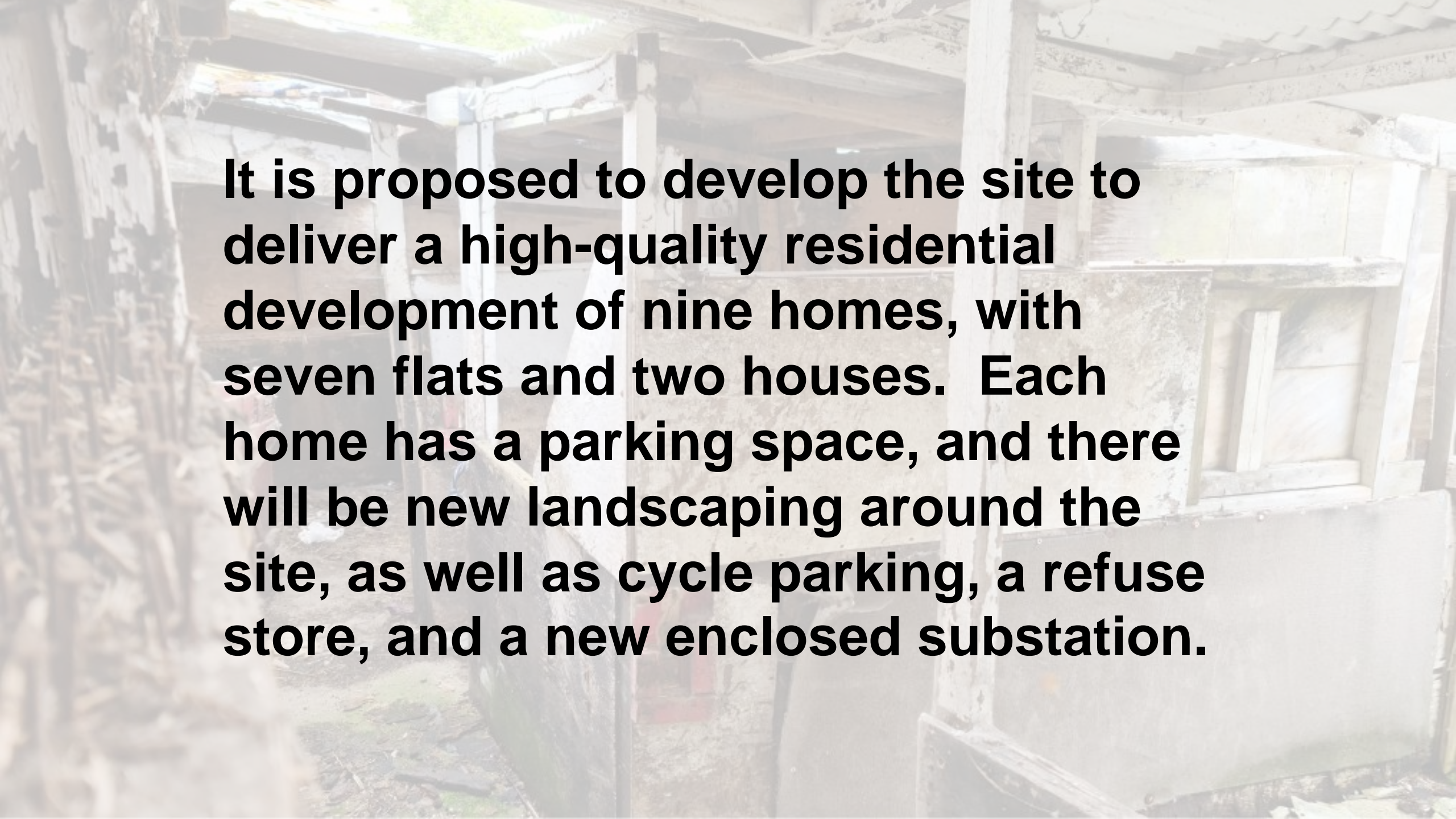
Pub

Woodedge Close



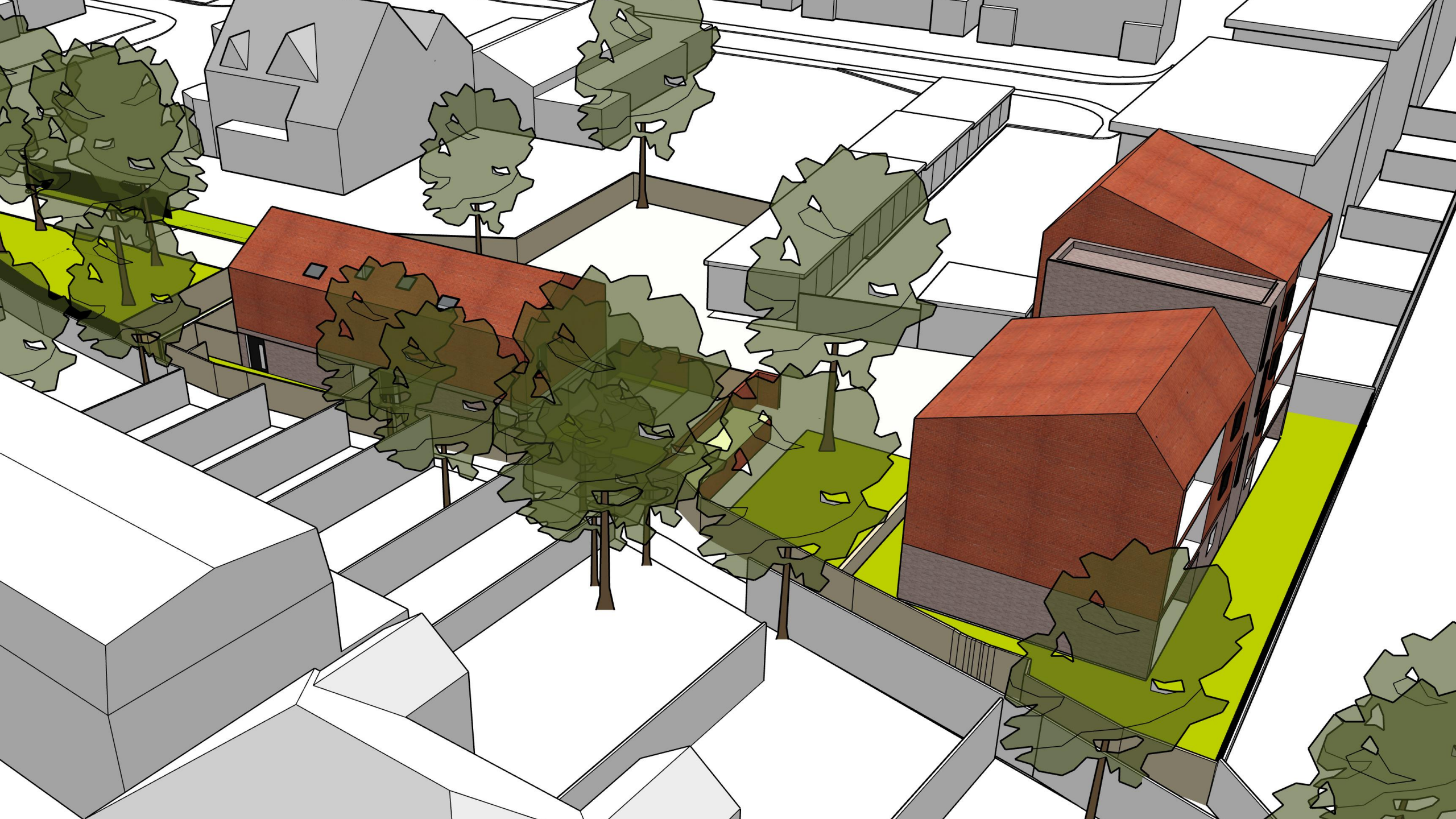
Existing building





It is proposed to develop the site to deliver a high-quality residential development of nine homes, with seven flats and two houses. Each home has a parking space, and there will be new landscaping around the site, as well as cycle parking, a refuse store, and a new enclosed substation.





Landscape masterplan



Future substation location





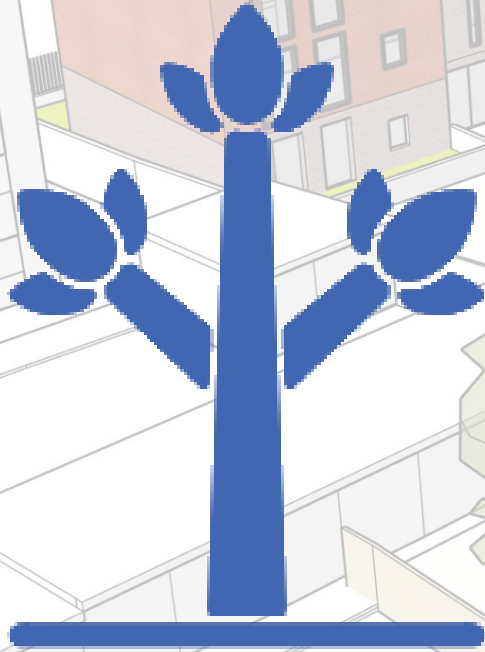
**This is a derelict site,
and the new homes will
help regenerate the site,
and provide nine quality
homes that help the
Council towards its
housing targets.**



We are confident that there will be a very significant improvement to the visual appearance of the site, with a high quality architectural design.

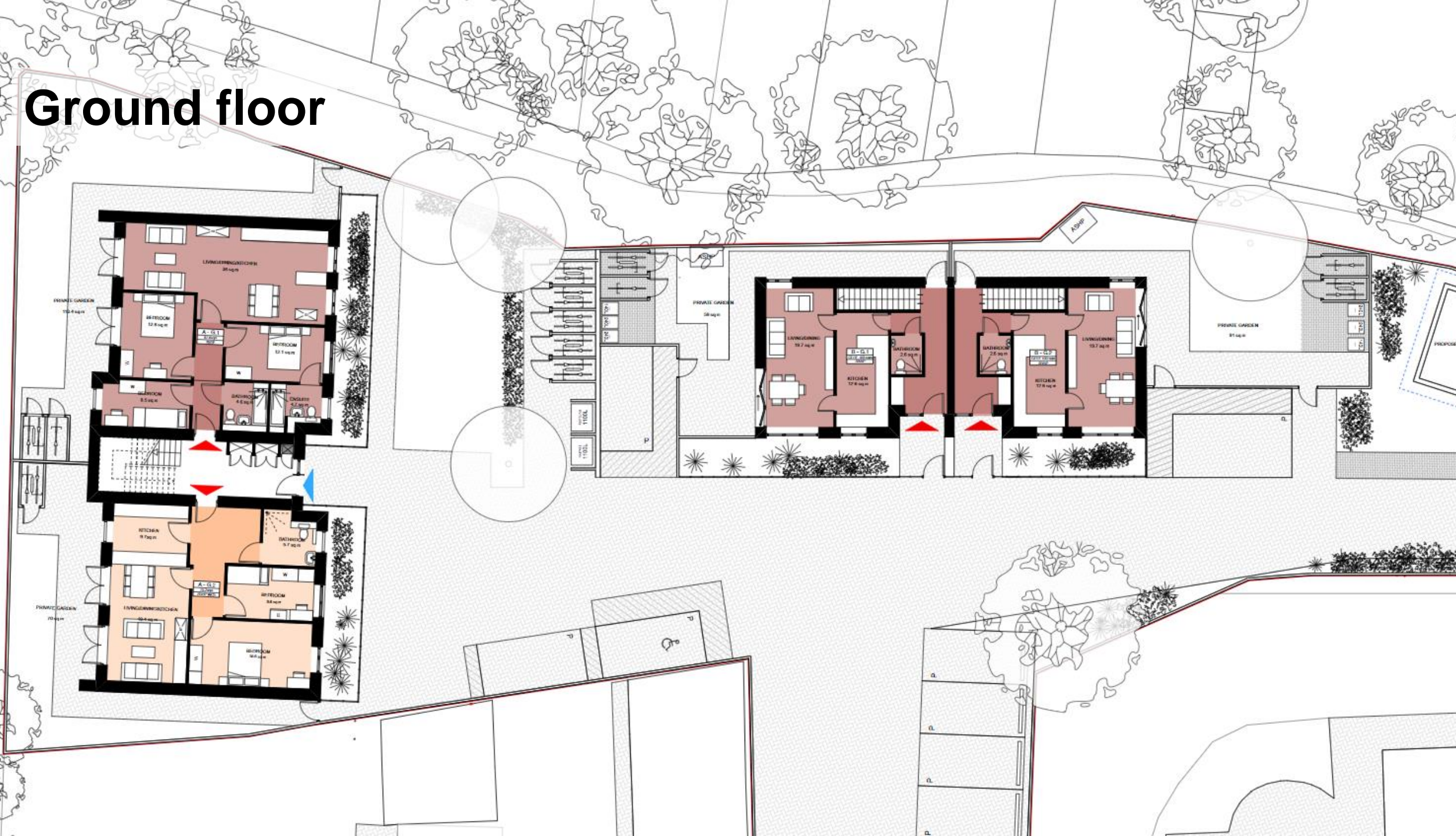


We are providing a mix of housing sizes to meet current and future housing needs, including a number of new family dwellings.



The homes will include a great landscaping scheme, including a pocket woodland area for residents fronting onto Forest Side. This will improve the site's biodiversity and urban greening.

Ground floor



First floor



Building elevation







Forest Side Real Estate Ltd

cmmunityUK