



Street view from Kings Road

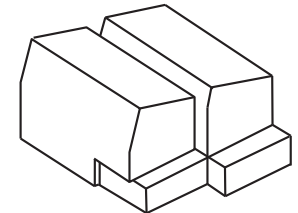
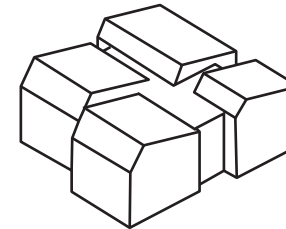
The site contains the former Horley Library, which is a 1960's single storey building fronting onto Victoria Road with a car park to the rear.



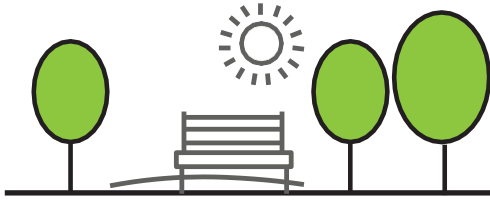
A Supported Independent Living scheme provides homes for working- age adults with learning disabilities (and) or autism to maintain or develop their independence and be part of the community.



The overall aim is to provide sensitive, adaptable and sustainable residential and specialist accommodation, which is much needed in the local area.

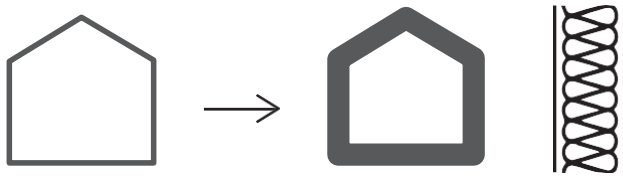


STATEMENT OF NEED



1. SURREY'S GREENER FUTURE

- Surrey's New Tree Strategy
- Improve well-being
- Provide natural habitat



2. FABRIC FIRST

- Energy efficient envelope
- Reduce running costs
- Address fuel poverty
- Better temperature control



3. RENEWABLE ENERGY ON-SITE

- Reduce carbon emissions
- Cleaner, healthier environment
- Sustainable and self sufficient energy



TOWNHOUSES

Entrance

1. 7 no. parking spaces

2. Apartment building bin/bike store

3. Drop-off

4. Townhouse bin/bike store



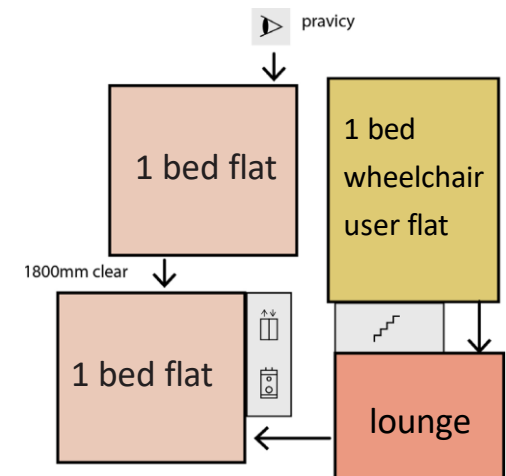
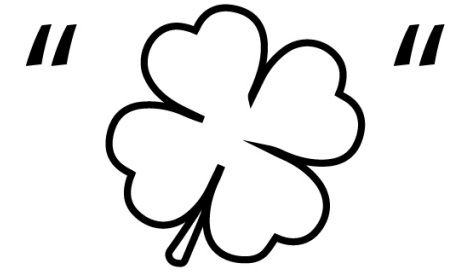
APARTMENT BUILDING
Clover leaf

SITE AERIAL VIEW



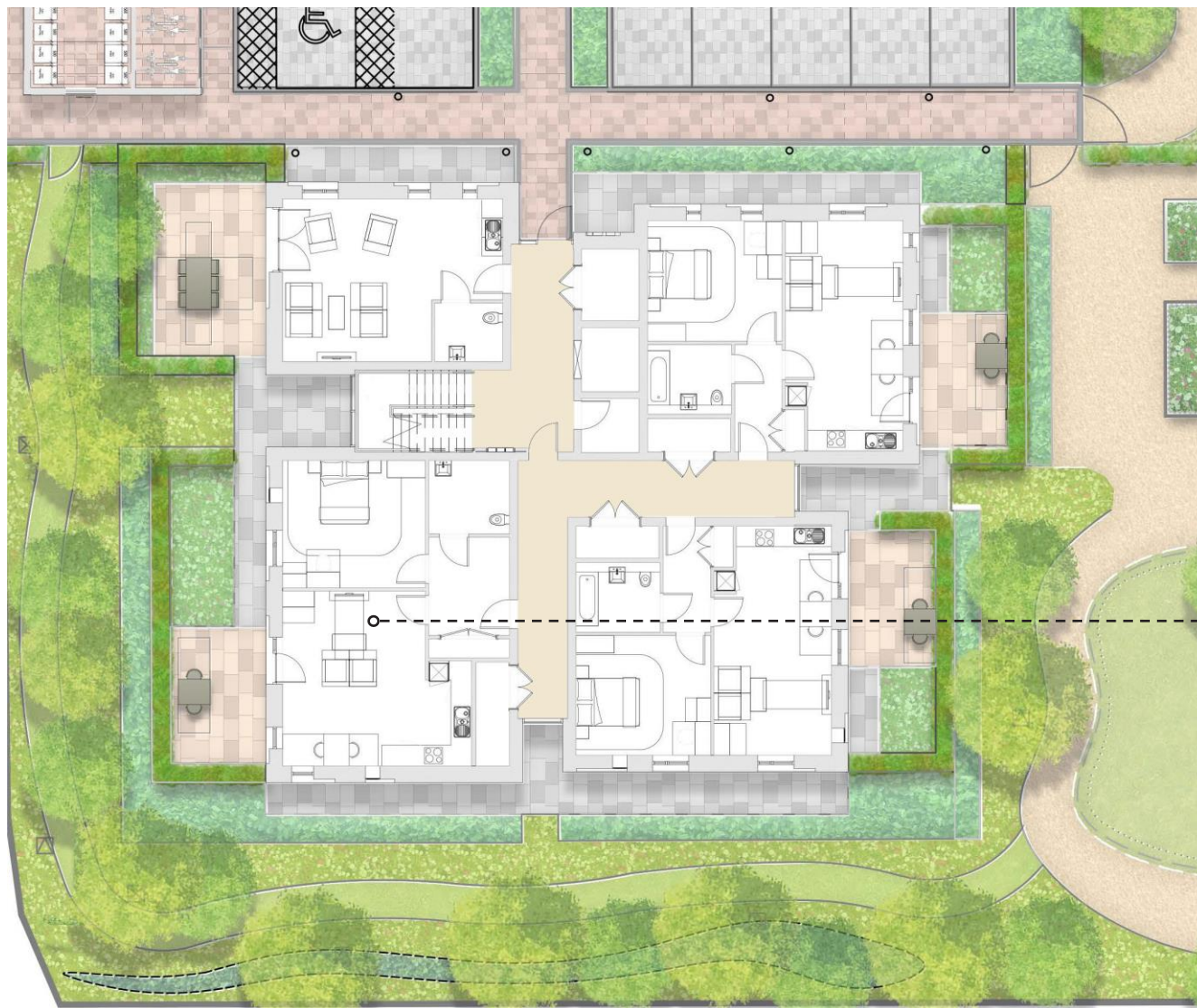
APARTMENT BUILDING

- 2 storey building
- 6 x 1 bed self contained flats
- each with a private outdoor space
- communal lounge with terrace





CLOVER LEAF



Ground floor plan

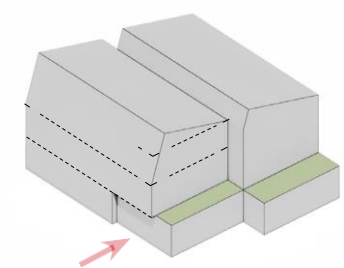
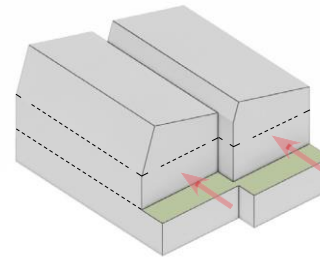
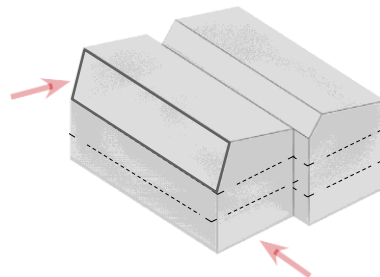
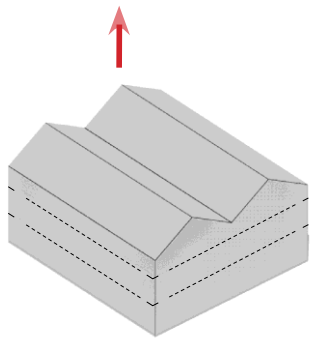


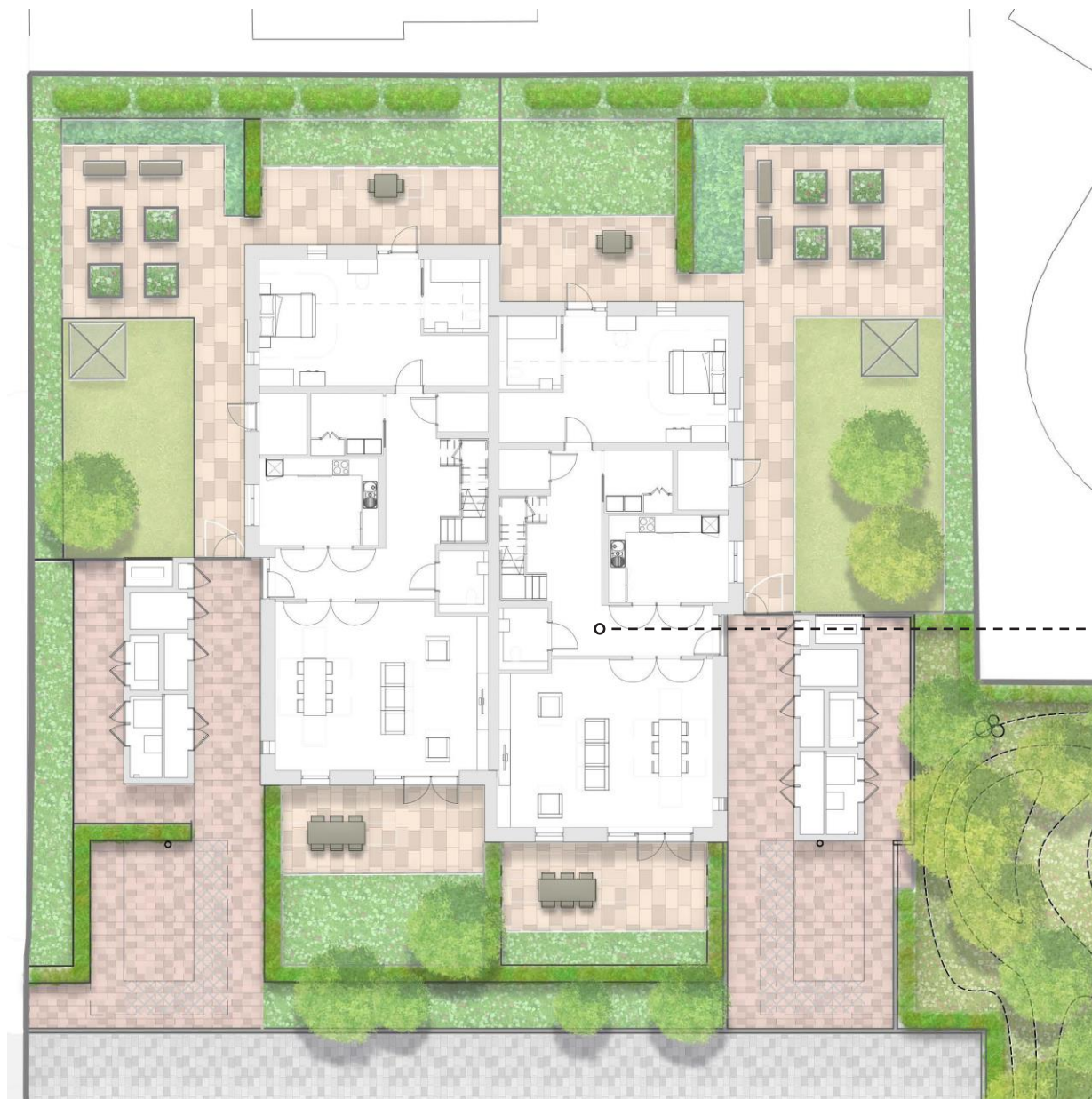
Typical wheelchair user apartment

TOWNHOUSES

Two new shared facilities townhouses, each providing:

- 5no. fully accessible ensuite bedrooms
- communal lounge, kitchen, and dining room
- private and communal gardens
- drop-off point near entrance





Ground floor plan



Townhouse Ground Floor



PROPOSED MATERIALS

Brick
light red



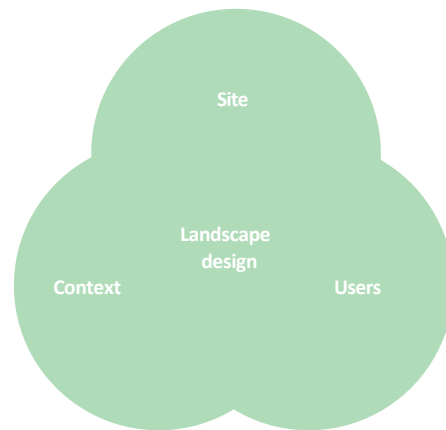
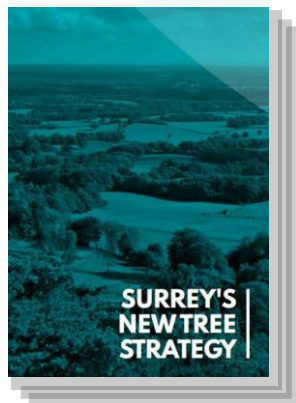
EXISTING MATERIALS



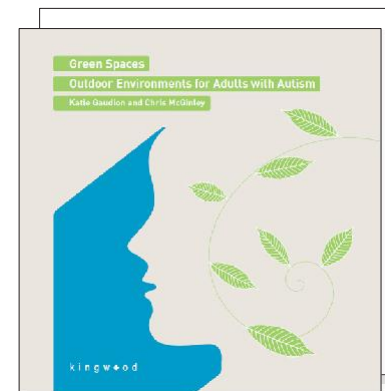
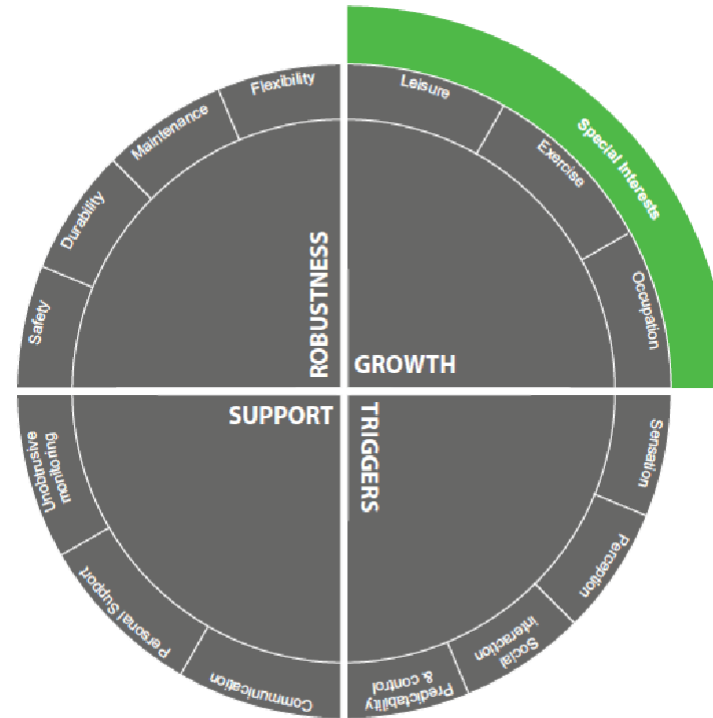
To compliment the local context...

MATERIALS

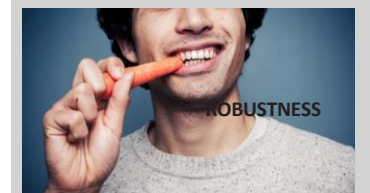
- Create a specialist environment, tailored to the residents specific needs.
- Build on the site opportunities to create a meaningful connection to nature.
- Provide a series of spaces which can accommodate different uses and activities.
- The landscape is for both the residents and staff. A place to interact with others and nature.
- The landscape spaces are underpinned by Surrey County Council's ambitious green agenda.



'BY 2030, SURREY WILL BENEFIT FROM 1.2 MILLION NEW TREES, WITH THE RIGHT TREES PLANTED IN THE RIGHT PLACE, INCLUDING BOTH URBAN AND RURAL LOCATIONS, AND SUPPORTED TO GROW TO MATURITY.'



Best Practice Principles



A broad summary of some of the ecology and biodiversity enhancements we are looking to implement within the scheme are listed below:

- The inclusion of deadwood / log piles from tree works on site. These would typically be proposed near the boundaries
- The inclusion of bat and bird boxes within the landscape scheme
- Ensuring any fencing includes gaps at the base for hedgehog movement
- Installation of insect houses in appropriate locations



Mother Shipton Moth



A place for people and nature



1



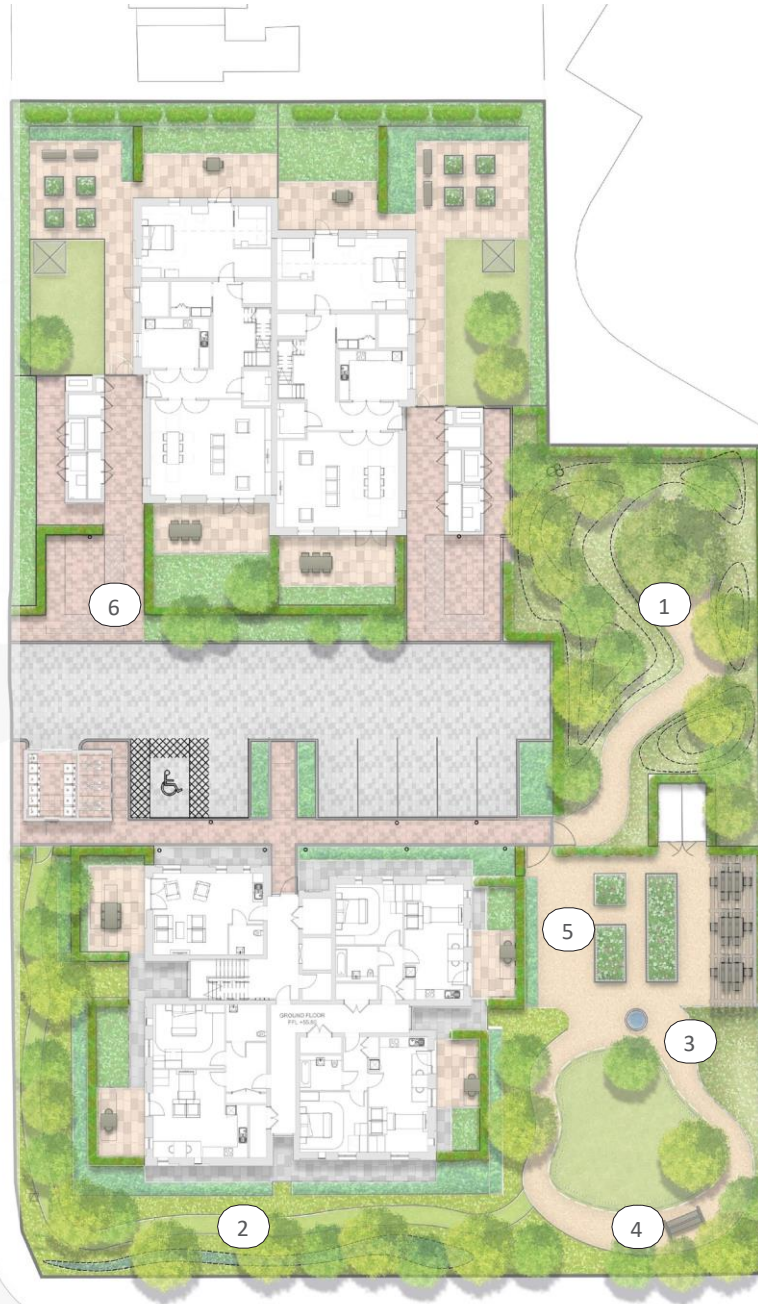
2

Engage with nature



3

1. Utilising existing landscape
2. Creating new species rich meadows
3. Stimulating the senses through light, wind and water
4. Providing a relaxing environment
5. Ensuring a connection to nature
6. Ensuring the landscape functions throughout the seasons



Multis

98 to



4

Learn new skills



5

Climate resilience



6

A sensitive connection to nature

LANDSCAPE



Thank you