



Existing main entrance on Anyards Road

The site is located at the junction of Anyards Road, Portsmouth Road and Oakfield Road.

The existing Coveham Hostel sits within mature grounds and there is a number of significant trees on the north east corner of the site.

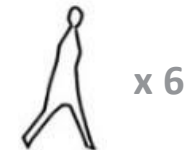
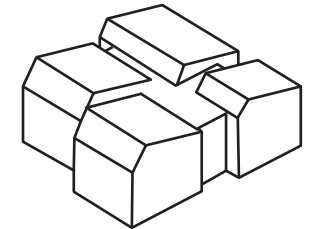
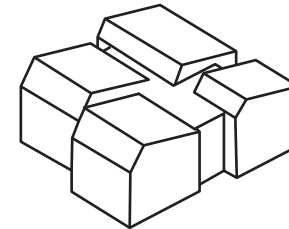
N

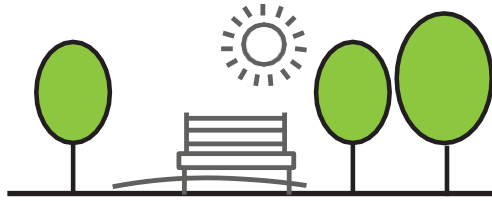




A Supported Independent Living scheme provides homes for working-age adults with learning disabilities (and) or autism to maintain or develop their independence and be part of the community.

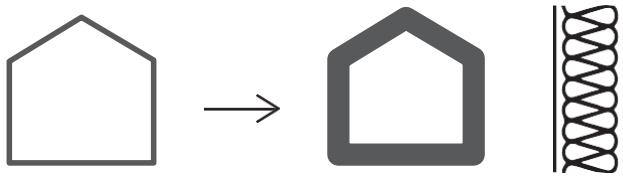
The overall aim is to provide sensitive, adaptable and sustainable residential and specialist accommodation, which is much needed in the local area.





1. SURREY'S GREENER FUTURE

- Surrey's New Tree Strategy
- Improve well-being
- Provide natural habitat



2. FABRIC FIRST

- Energy efficient envelope
- Reduce running costs
- Address fuel poverty
- Better temperature control

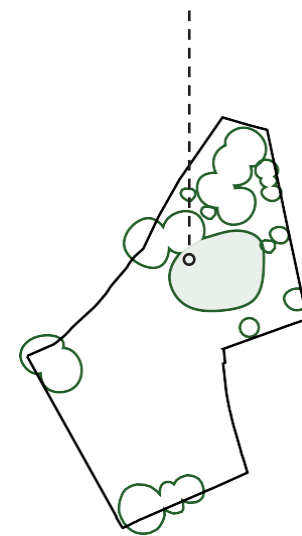


3. RENEWABLE ENERGY ON-SITE

- Reduce carbon emissions
- Cleaner, healthier environment
- Sustainable and self sufficient energy



'The Royal Oak'
Tree



Capturing the existing nature...

SITE

"  " **APARTMENT BUILDINGS**
Clover leaf

- 1. Two Disabled Parking Spaces
- 2. Four Parking Spaces
- 3. Bin/Bike/Substation Enclosure

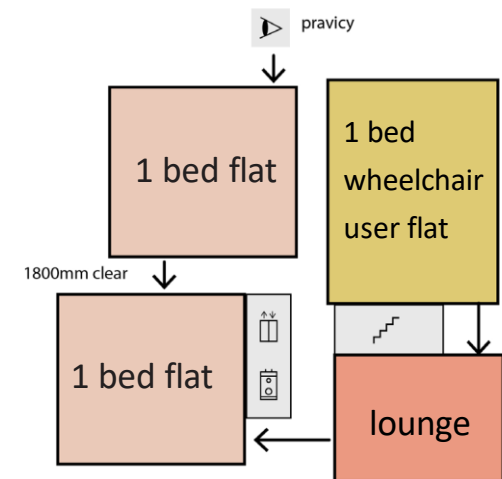
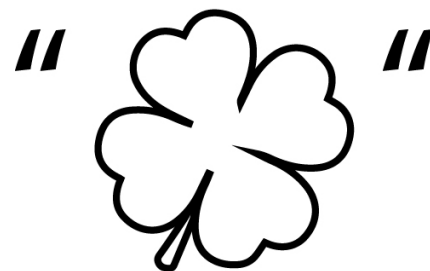


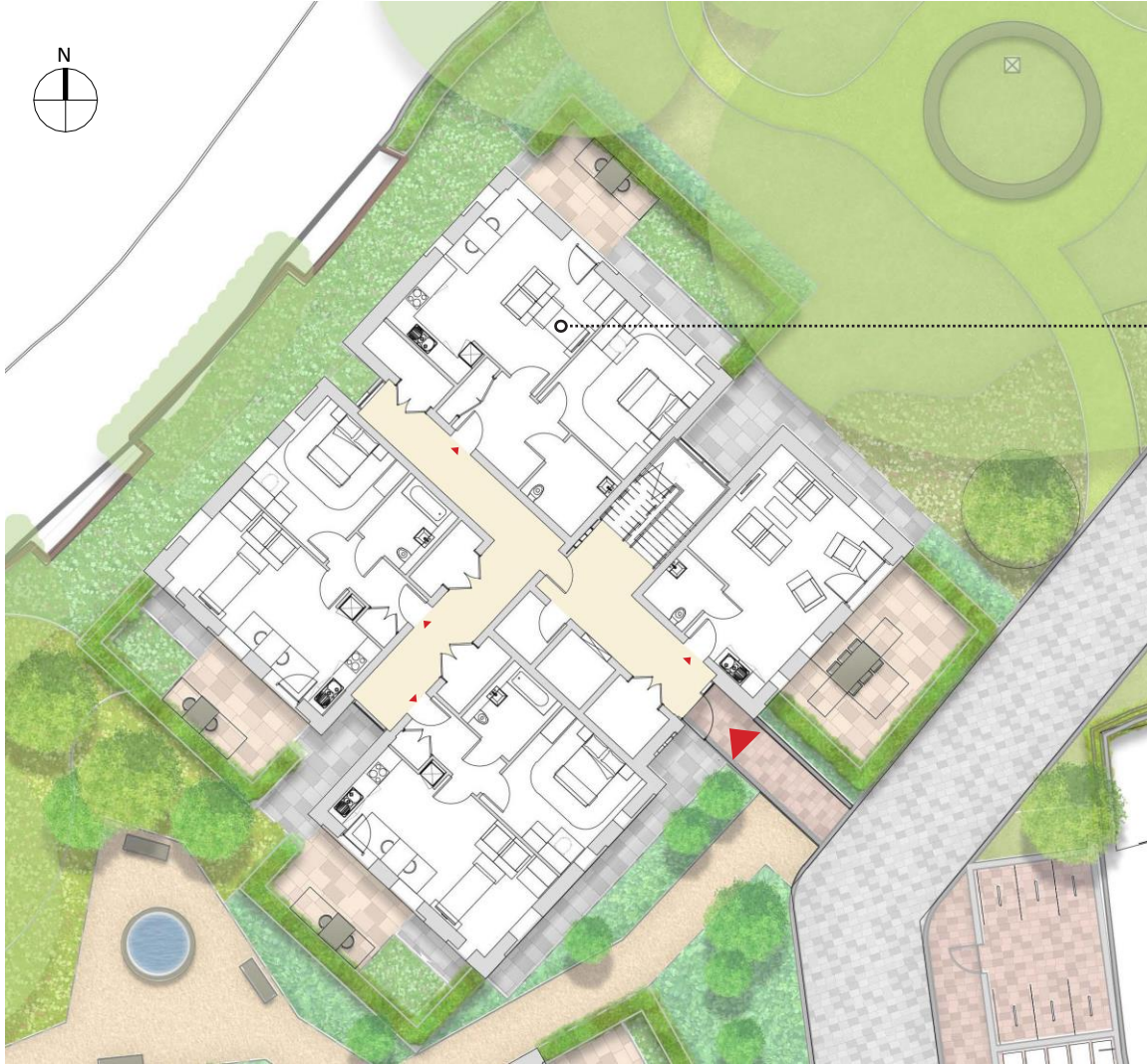
SITE AERIAL VIEW



APARTMENT BUILDING (x2)

- 2 storey building
- 6 x 1 bed self contained flats
- each with a private outdoor space
- communal lounge with terrace





Ground floor plan



Typical wheelchair user apartment



CLOVER LEAF



PROPOSED MATERIALS

EXISTING MATERIALS

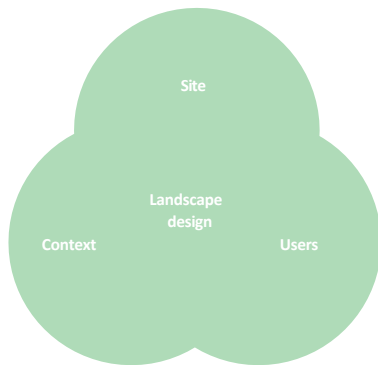
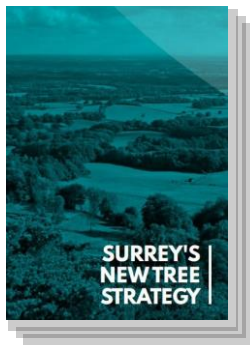
Brick
Cream/yellow



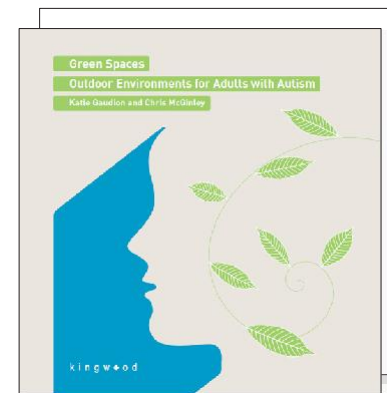
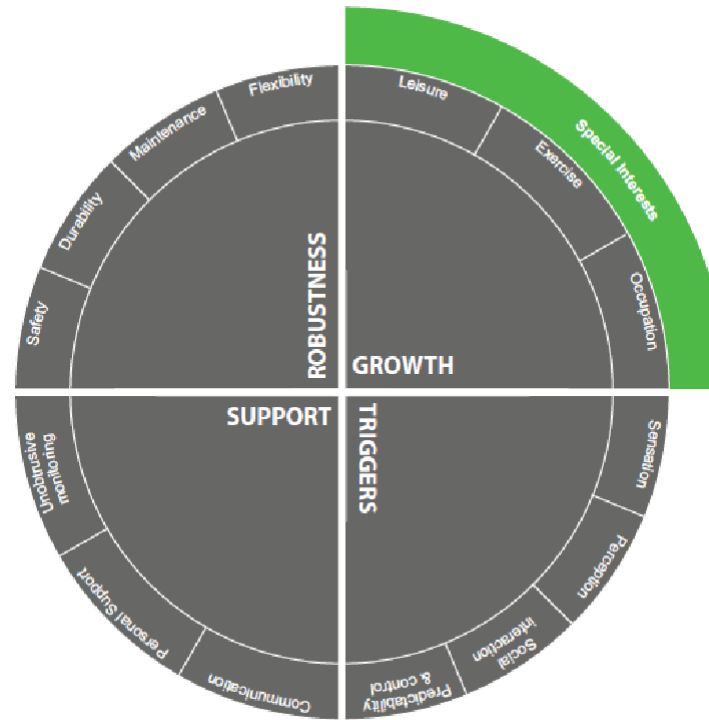
To compliment the local context...

MATERIALS

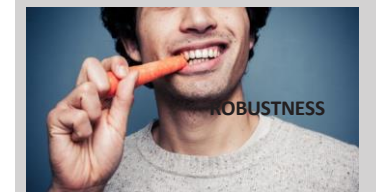
- Create a specialist environment, tailored to the residents specific needs.
- Build on the site opportunities to create a meaningful connection to nature.
- Provide a series of spaces which can accommodate different uses and activities.
- The landscape is for both the residents and staff. A place to interact with others and nature.
- The landscape spaces are underpinned by Surrey County Council’s ambitious green agenda.



'BY 2030, SURREY WILL BENEFIT FROM 1.2 MILLION NEW TREES, WITH THE RIGHT TREES PLANTED IN THE RIGHT PLACE, INCLUDING BOTH URBAN AND RURAL LOCATIONS, AND SUPPORTED TO GROW TO MATURITY.'



Best Practice Principles



A broad summary of some of the ecology and biodiversity enhancements we are looking to implement within the scheme are listed below:

- Retention of hedges and grassland.
- Bolster existing hedgerows
- Remove non-native species
- Include deadwood piles
- Install bat and bird boxes
- Ensure any fencing includes gaps at the base for hedgehog movement
- Installation of insect houses in appropriate locations



Mother Shipton Moth



A place for people and nature



1

1. Utilising existing landscape
2. Creating new species rich meadows
3. Stimulating the senses through light, wind and water
4. Providing a relaxing environment
5. Ensuring a connection to nature
6. Ensuring the landscape functions throughout the seasons
7. Green screen treatment



2

Engage with nature



3



4

Learn new skills



5

Climate resilience



6

A sensitive connection to nature

LANDSCAPE



Thank you



SNC • LAVALIN

ATKINS

Member of the SNC-Lavalin Group

