



**The former Manor School was closed in 2006 and demolished in 2018.**

**The site is located at the junction of Sanway Road and Magdalen Crescent in a residential area of Byfleet in Woking.**



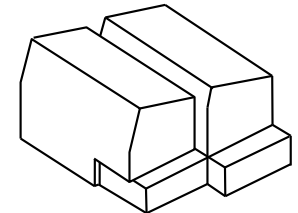
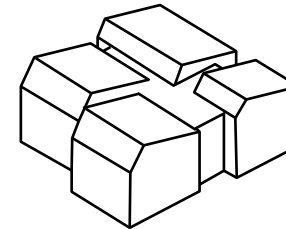
**THE SITE**



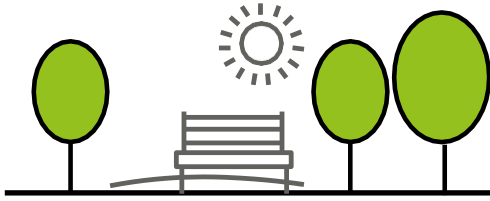


**A Supported Independent Living scheme provides homes for working-age adults with learning disabilities (and) or autism to maintain or develop their independence and be part of the community.**

**The overall aim is to provide sensitive, adaptable and sustainable residential and specialist accommodation, which is much needed in the local area.**

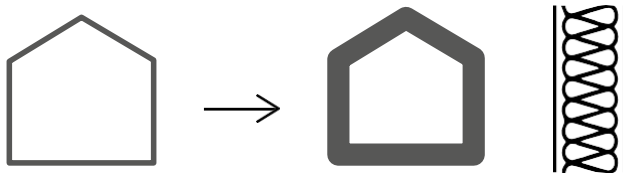


**STATEMENT OF NEED**



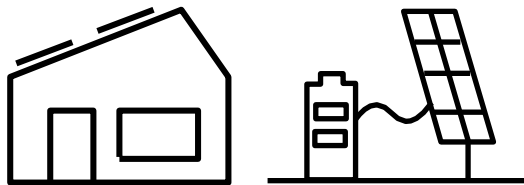
## 1. SURREY'S GREENER FUTURE

- Surrey's New Tree Strategy
- Improve well-being
- Provide natural habitat



## 2. FABRIC FIRST

- Energy efficient envelope
- Reduce running costs
- Address fuel poverty
- Better temperature control



## 3. RENEWABLE ENERGY ON-SITE

- Reduce carbon emissions
- Cleaner, healthier environment
- Sustainable and self sufficient energy



1. Seven parking spaces
2. Apartment building bin/bike store
3. Drop-off
4. Townhouse bin/bike store

"" **APARTMENT BUILDING**  
**Clover leaf**

**TOWNHOUSES**

 **Existing  
access**

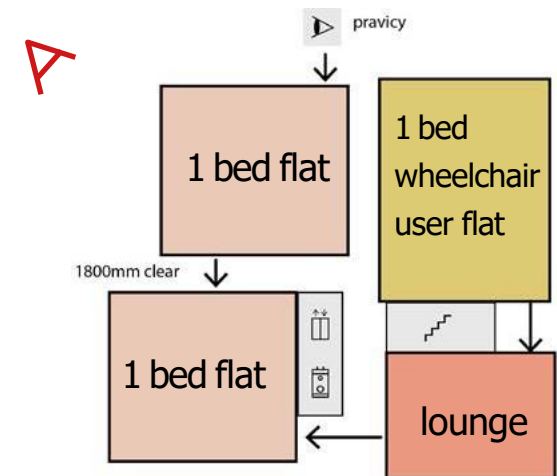


**SITE AERIAL VIEW**



## APARTMENT BUILDING

- 2 storey building
- 6 x 1 bed self contained flats
- each with a private outdoor space
- communal lounge with terrace







Ground floor plan

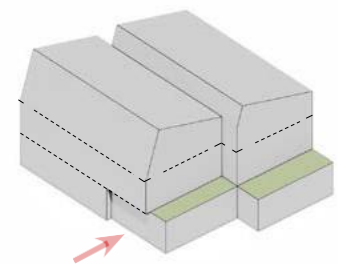
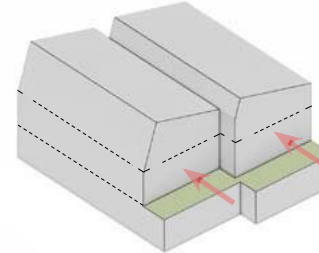
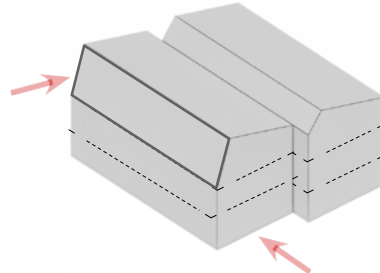
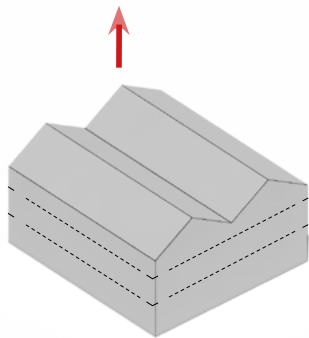


Typical wheelchair user flat

## TOWNHOUSES

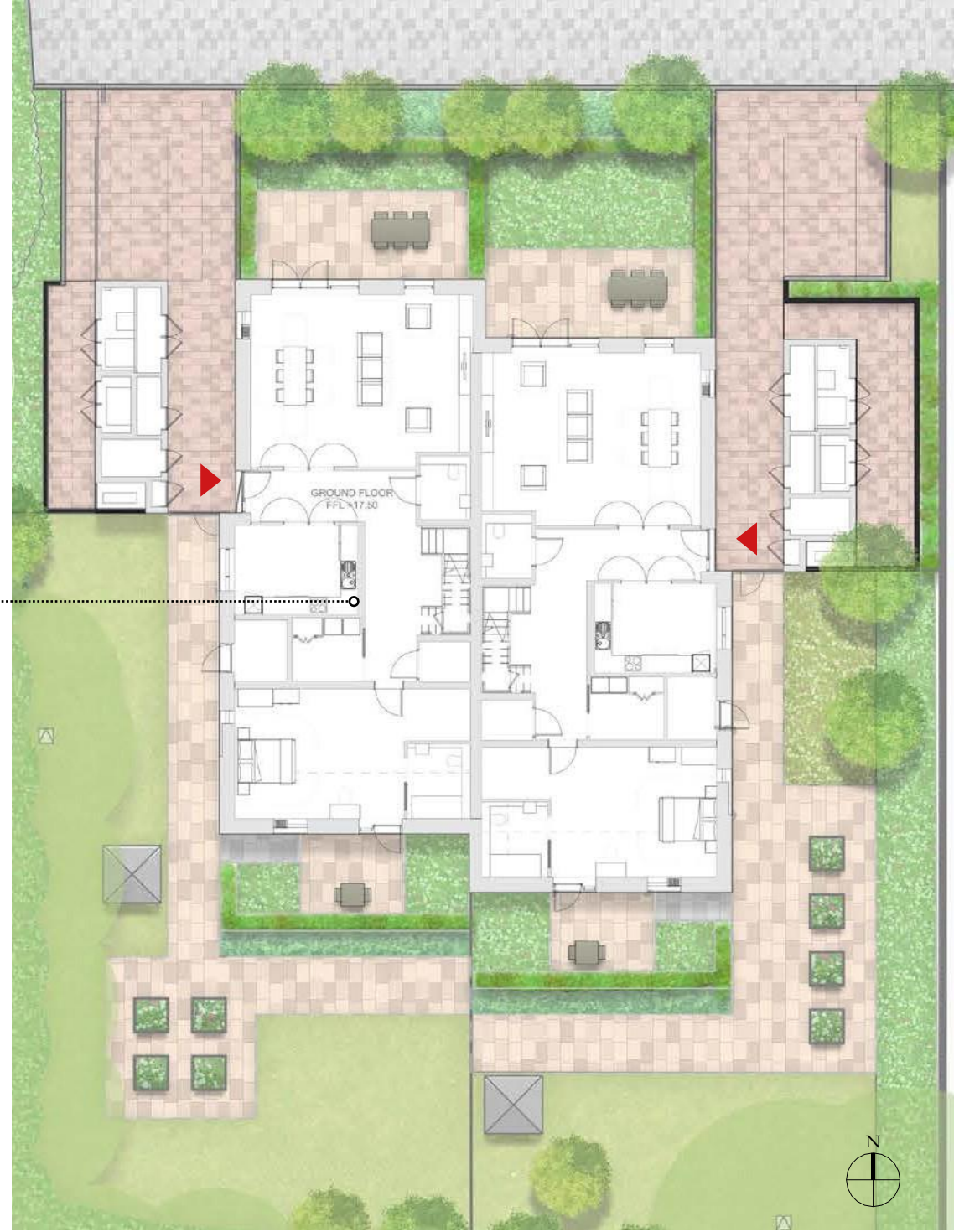
Two new shared facilities townhouses, each providing:

- Five fully accessible ensuite bedrooms
- communal lounge, kitchen, and dining room
- private and communal gardens
- drop-off point near entrance



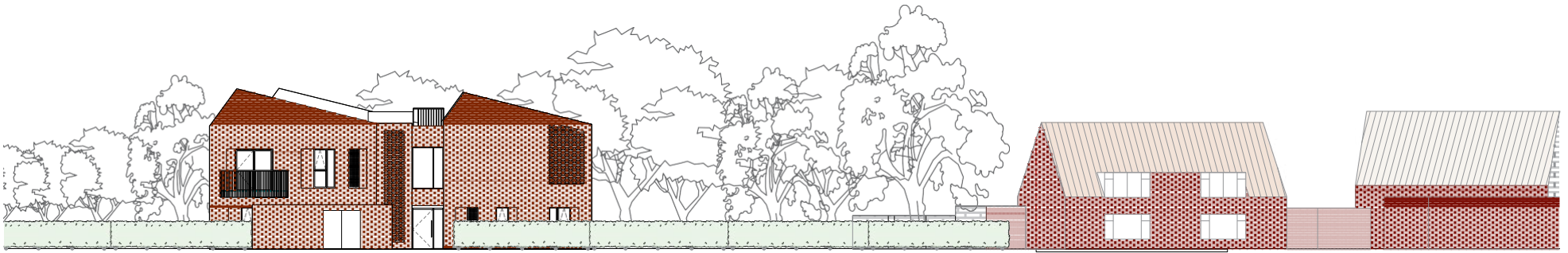


Ground Floor Layout

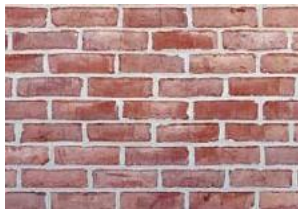


TOWNHOUSES





## PROPOSED MATERIALS



Brick - Light red



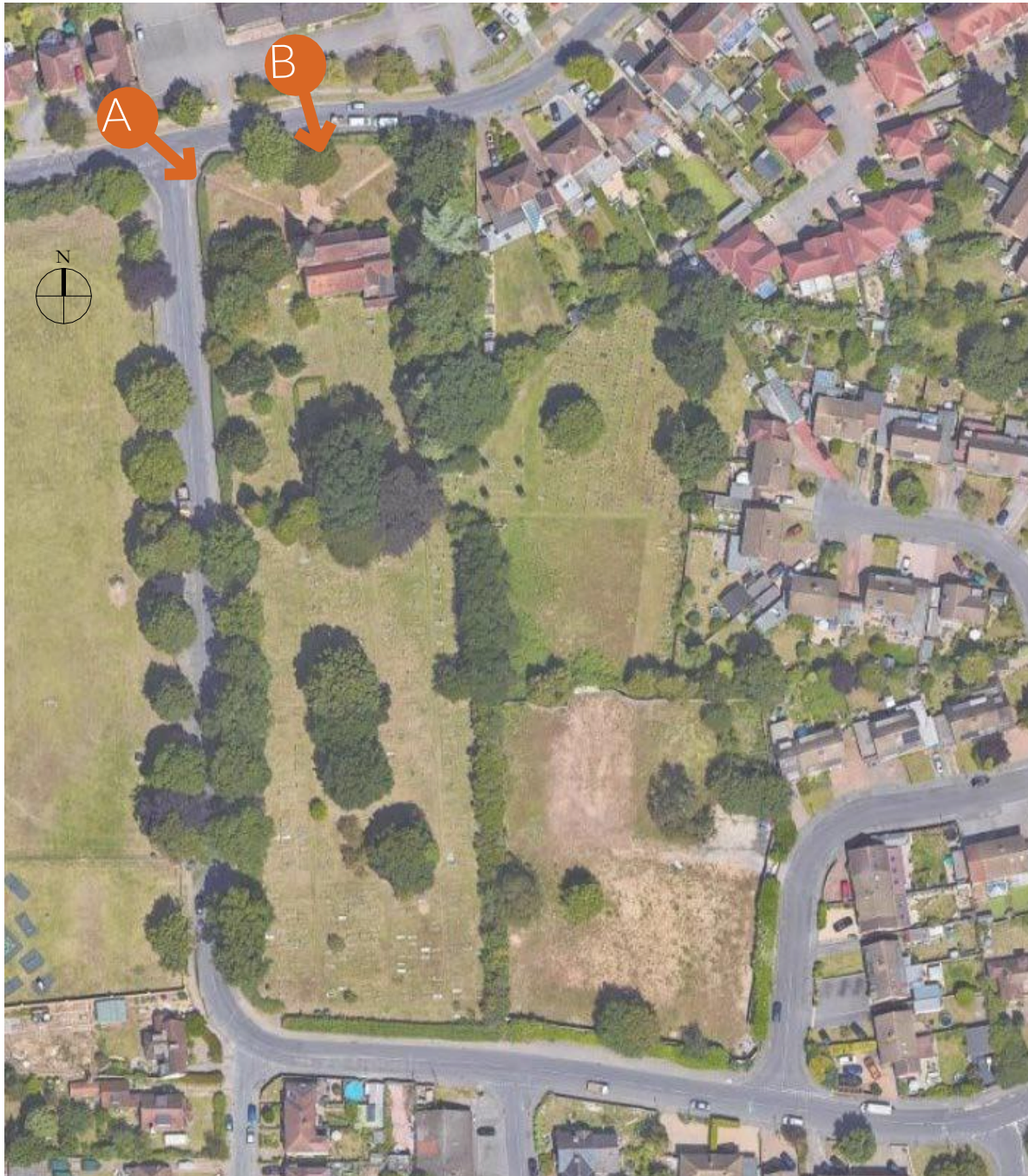
## EXISTING MATERIALS



To compliment the local context...

# MATERIALS





Aerial view from St Mary's Church



Street view A

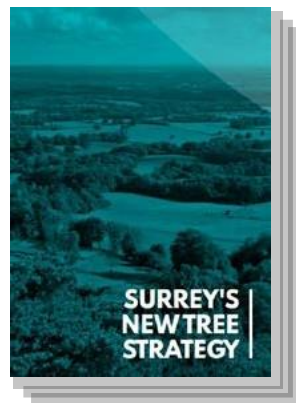


Street view B

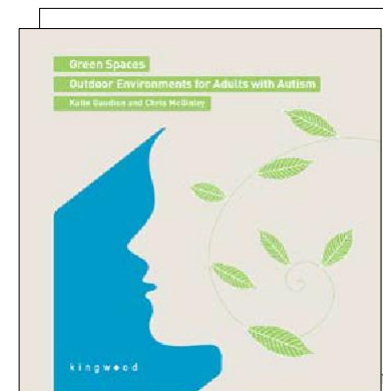
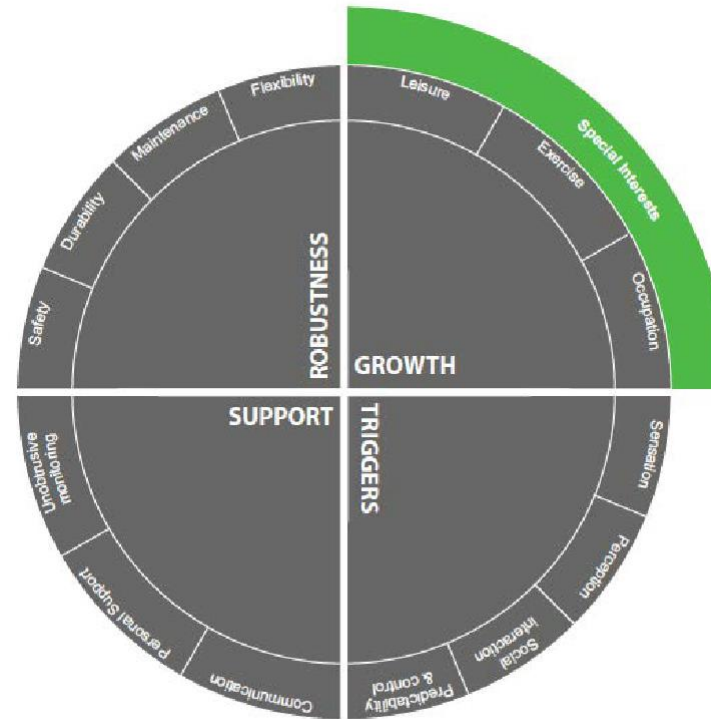
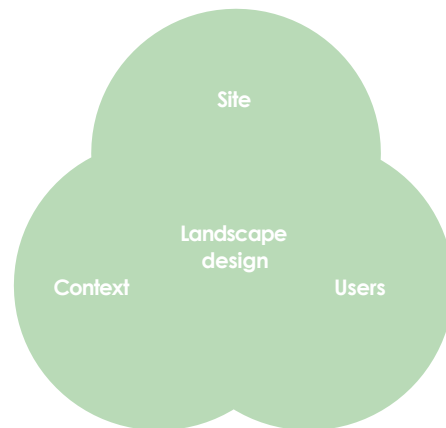
LOCAL CONTEXT



- Create a specialist environment, tailored to the residents specific needs.
- Build on the site opportunities to create a meaningful connection to nature.
- Provide a series of spaces which can accommodate different uses and activities.
- The landscape is for both the residents and staff. A place to interact with others and nature.
- The landscape spaces are underpinned by Surrey County Council's ambitious green agenda.



**'BY 2030, SURREY WILL BENEFIT FROM 1.2 MILLION NEW TREES, WITH THE RIGHT TREES PLANTED IN THE RIGHT PLACE, INCLUDING BOTH URBAN AND RURAL LOCATIONS, AND SUPPORTED TO GROW TO MATURITY.'**



## Best Practice Principles





A broad summary of some of the ecology and biodiversity enhancements we are looking to implement within the scheme are listed below:

- Retention of hedges and grassland.
- Bolster existing hedgerows
- Remove non-native species
- Include deadwood piles
- Install bat and bird boxes
- Ensure any fencing includes gaps at the base for hedgehog movement
- Installation of insect houses in appropriate locations



Mother Shipton Moth





A place for people and nature



1

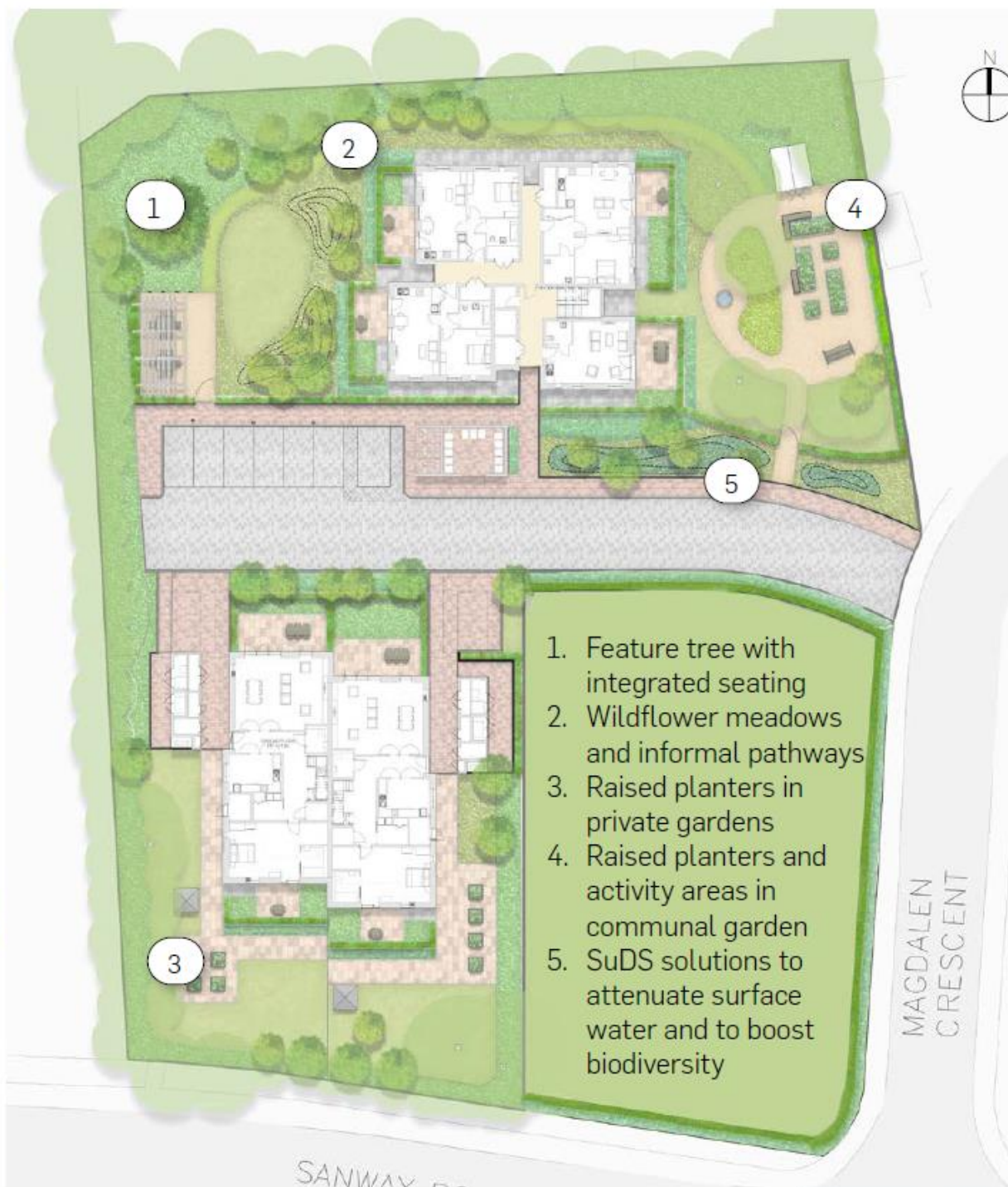


2

Engage with nature



3



1. Feature tree with integrated seating
2. Wildflower meadows and informal pathways
3. Raised planters in private gardens
4. Raised planters and activity areas in communal garden
5. SuDS solutions to attenuate surface water and to boost biodiversity



4

Learn new skills



4

Climate resilience



5





# Thank you